

Meadview Monitor

MEET &
PLAY at ~

MCA
MEADVIEW, AZ

September/October 2017



Virga above the Grand Wash Cliffs - Photo by Sandy Henderson

INSIDE THIS ISSUE

| | |
|---|----|
| Disclaimer..... | 2 |
| Letter from the Board..... | 3 |
| Explorers And Over The Hill Hikers..... | 4 |
| Special Notice to Members.... | 5 |
| Friends of the Arizona Joshua Tree Forest..... | 6 |
| Blast From The Past..... | 7 |
| VFW News..... | 9 |
| Quail Club News..... | 9 |
| Calendar of Events..... | 10 |

SPECIAL FEATURES

| | |
|---|----------|
| Law Enforcement Appreciation Dinner..... | 8 |
|---|----------|



BOARD OF GOVERNORS

Ron King.....President
 Don Jarvis.....Vice President
 Ray Stone.....Treasurer
 Lynn Wright Murray.....Secretary
 Steve Berg.....Governor
 Dennis Kehoe.....Governor
 Elizabeth Buckingham...Governor

MCA EMPLOYEES

Edie Needham...Member Services
 Supervisor & Contributing Editor
 Sandy Henderson...Member
 Services & Contributing Editor
 Darrell Young...Maintenance
 Larry Minard...Maintenance &
 Security
 Bob Reynolds...Security
 Richard (Woody) Wood...Security



Facility Hours

Open from 8 a.m.—10 p.m.
 7 days a week

Office Hours

Tuesday—Saturday
 9 a.m.—4:30 p.m.
 Closed from 12 p.m.—12:30 p.m.
 for lunch

DISCLAIMER:

The Meadview Monitor is an official publication of the Meadview Civic Association (MCA, a membership association) P.O. Box 217, Meadview, AZ 86444. (928) 564-2313, Fax (928) 564-2520, or email: mca@citlink.net (please put “Meadview Monitor” in the subject line.) Notice in the Meadview Monitor is official notice of any and all proceedings of the MCA.

Submissions become the property of The Meadview Monitor. We will not publish any letters or ads that are unsuitable for this newsletter or for which the MCA be held liable. The Board of Governors will make the final decisions on those letters, ads and/or articles that are printed. All articles must have a by-line. All letters must have a name and a traceable address.

ADVERTISEMENT RATES

This is a Bi-Monthly Publication.

Business Card - \$6 per issue or \$36 per year.

1/4 Page - \$10 per issue or \$60 per year.

Half Page - \$20 per issue or \$120 per year.

Full Page - \$40 per issue or \$240 per year.

Please make check payable to:
 Meadview Civic Association or MCA
 P.O. Box 217
 Meadview, AZ 86444

NOTE:

- * All ads must be paid in advance.
- * The MCA reserves the right to edit or refuse ads or submissions.
- * Sorry, no refunds for cancellations.

LETTER FROM THE BOARD

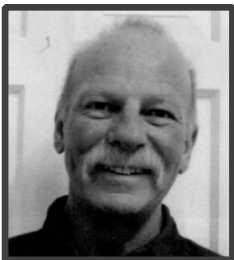
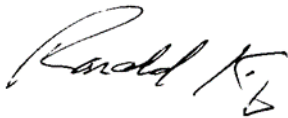
On behalf of the Association and its members, the Board of Governors would like to give thanks to Secretary, Joy Luke. Joy served on the Board from 2013 to 2017 and continues to volunteer her time. Joy brought her enthusiasm, dedication, and professional experience to the MCA every time she walked through the doors.

No issue or problem was too big for Joy. If she saw an issue rising she had the solution in hand. To work with her, you had to bring 2 pairs of shoes with you. One pair being track shoes and the second being ballet slippers. She ran circles around the 6 of us and kept us on our toes. If you thought you were having a bad day you left it in the parking lot. Joy's never had a bad day, so you knew not to bring yours.

Joy is an inspiration to the office staff. She has helped them in many ways, such as, discussing new procedures in the office to make it more efficient. Also, she was a big help with the Office Procedure Manual. She has always been a huge influence when it came to the Annual Assessment Mailings. She has driven to Kingman on many occasions for MCA business on her dime.

Joy tackled every problem or issue, never batting an eyelash. She found discrepancies in our assessment billing procedures and found thousands of dollars in unpaid assessments. She instituted property liens and some have been paid off. She has volunteered countless hours filing all the paperwork that is necessary for the lots in the membership. A wake-up call to many members. Joy's heart of Gold, love of life and those around her made it a true joy to go to work.

Joy we love you and thank you!



EXPLORERS AND OVER THE HILL HIKERS

By Suzann Newell

Just a reminder that our first meeting will be September 13 at 6:30.

We will discuss and plan some hikes and trips. All MCA members are invited to join this group. We meet in the MCA Auditorium.

I'll have some photos that might interest everyone.

Our regular meeting is the 2nd Wednesday of each month 6:30 at

Tad's Auto & Marine Service & Repair

ASE Certified Mechanic

A/C Tune ups

Brakes

Suspension Computer Diagnostics

Tire Repair



Tad's Boat & RV Storage

Covered & Uncovered

24 ft. To 36 ft. Covered

ANY SIZE Uncovered

24-Hour Access

Gate Code Entry



27070 N Pierce Ferry Road

Meadview, AZ 86444

(928) 564-2855



Meadview Lake Motel

30205 Escalante Blvd

Meadview AZ

928-564-2343

Enjoy The View



UPCOMING EVENTS FOR 2017

September 2nd - Labor Day Band Party

October 28th - Halloween Costume Party

November 17th - Thanksgiving Pot Luck Dinner

December 9th - Christmas Sweater Karaoke Party

December 31st - New Years Eve Band Party

290 E. Meadview Blvd, Meadview, AZ 86444

(928) 564-2100



MOHAVE RANCHO LUMBER



GENERAL CONTRACTOR
Specializing in: Water & Septic Systems
Manufactured Home Site Preparation

FRANK GERACI

ROC: 101886 * 149886 * 217244 * 252832

14500 N. Pierce Ferry Road
Dolan Springs, AZ 86441

(928) 767-3339
Fax: (928) 767-6245

LOT FOR SALE

MCA OWNED

All utilities available.

Corner lot.

1060 E Bradley Bay Drive

Listed at \$10,000

Please direct all inquiries to
**Kingman Premier Properties of
Meadview**

928-564-2222

TOPS CLUB AZ # 0531.

"TAKE OFF POUNDS SENCIBLY" !!



We are a local Support group
We meet Thurs. at the Dolan Spr. Chamber
9am to 11 am

Dolan Springs 928-530-7510 Mary
Meadview 928-546-2522 Deb
Kingman 928-565-1877 Pam

For Sale by Owner

Undeveloped lot located in the foot-hills area of Meadview, AZ.

Lot # 19-0063 Tract # 1198

1410 E. Pueblo Dr.

Lot Size Dimensions 130'/260'

This lot has a gentle downhill slope with a beautiful view of the Grand Wash Bluffs of the Grand Canyon. Utilities are available at the street.

\$15,000 gets you a home site with an awesome view. If interested, please call 360-877-6381 and leave a message.

AMC FOAM ROOFING

**FOAM ROOFING
FLAT ROOF SPECIALIST
MOBILE HOMES**

Can Be Applied On Most Roofs

**RECOATING & REPAIRS OF
EXISTING FOAM ROOFS**

AZ ROC#255400 - Commercial & Residential

**928.234.2020
760.777.3553**

SERVING LAKE HAVASU, BULLHEAD CITY, FORT MOHAVE,
TOPOCK, GOLDEN VALLEY, KINGMAN & NEEDLES

MEMBER NOTIFICATION: FOR ANY MEMBER(S) WANTING TO USE THE MCA KITCHEN, PLEASE SEE THE OFFICE STAFF, OR A SECURITY/MAINTENANCE PERSON (AFTER OFFICE HOURS) TO GAIN ACCESS TO THE KITCHEN. AS A COURTESY TO OTHER MEMBERS, PLEASE LEAVE THE KITCHEN IN THE SAME NEAT CONDITION YOU FOUND IT IN. THANK YOU—BOARD OF GOVERNORS

MCA
Payment and
Billing Options

Payment Options:

Bill Pay through your bank. Automatic payment sent by the member from their bank account and a check will be made out and mailed to the MCA from your bank.

Credit Card Payments by calling or coming into the office.

Check, Money Order or Cashier's Check either mailed or handed to the office staff. Most property owners are already utilizing this option. The change is that the checks are now electronically deposited within a week of receiving them.

Cash payments are always welcome. Bring cash payments to the office. Please do not mail cash payments.

NEW! PayPal payments are now accepted at our website: mca-az.com Click on [Make A Payment](#) at the home page.

Billing Options:

E-Billing— Need to provide the office with your e-mail address.

1. You can fill out the Update form on the last page of this Monitor issue and mail it to us.
2. You can send us an e-mail. In the subject line write **E-Billing Request**. In the body provide all of your information including your preferred E-Billing address. **Please provide either your lot # or the Assessor's Parcel #.**
3. When the next billing cycle starts you will receive an E-Bill for every lot owned instead of a paper bill via snail mail.

Snail Mail no need to do anything to request this

FRIENDS OF THE ARIZONA JOSHUA TREE FOREST

By Pam Steffen



We have begun the process for continuing the collection of data on our magnificent Joshua Tree Forest! After the initial process began at the Citizen Science project in March 2016, we agreed to help Todd Esque, USGS Research Ecologist, and his associates set up permanent data collection plots in various areas of our forest. The first plot was established this June with help from board members Chuck Steffen and Larry Townsend. In a predetermined section, all Joshua trees within a 50 meter square area are measured and numbered and the data recorded. Once a year each section will be visited by our board members and volunteers for the collection of updated data. This fall, Todd will visit us again to set up another section in a different area of the forest.

We are very excited at this opportunity to collect important data on a regular basis for Todd and his team to use in determining how the Joshua Trees are faring in our corner of the Mohave Desert. If you are interested in volunteering to help set up the permanent plots and collect data, please let any board member know (Sharon Baur, Pam & Chuck Steffen, Larry Townsend). Email at friendsofjoshuatreeforest@hotmail.com or call 564-2373 or talk with us at any COM meeting. We welcome all help in this very important effort to preserve and protect our unique Joshua Tree Forest.

Come join us! Annual membership fees- Single/ Couple \$25, Family \$45, Business \$30. For more information check out our website at:

www.joshuatreeforest.org

LOOK



NOW AVAILABLE!

**MEADVIEW MONITOR DELIVERED DIRECTLY
TO YOUR EMAIL INBOX .**

**IF YOU WANT THE MONITOR DELIVERED VIA
EMAIL, PLEASE SEND YOUR REQUEST TO:**

mca@citlink.net

**WE 'LL BE HAPPY TO ADD YOUR NAME TO
OUR MONITOR MAILING LIST!**

IMPORTANT NOTICE

Please help our emergency responders identify your property by posting your address in clear view. GPS is not always accurate in our area.

Their quick response is for your own benefit.

BLAST FROM THE PAST, OCTOBER 1967

PAVING OF PIERCE FERRY ROAD TO MEADVIEW BEGUN COMPLETION DATE SLATED FOR FALL

Many pieces of heavy equipment are in operation along the unpaved portion of Pierce Ferry Rd., preparing this last stretch of gravel thoroughfare for paving, all the way to Meadview.

Under supervision of Mr. Lee Stevens, Mohave County Road Superintendent, this unpaved portion will start where the present paving ends, 12 miles east of the junction with Hwy 93-466.

On the scene preparing the road bed is a large crew of men with a D8 Cat Bulldozer, Cat 12 Motor graders, several dump trucks and a gravel screening plant. They are grading and compacting the road bed in preparation to its receiving oil.

Supt. Stevens says there will be some new alignments to improve the existing road conditions and most of the high knolls will be lowered. The excess dirt from these knolls will be pushed into the draws, thus removing the rocky coaster effect that now exists in some parts of the present road.

The paving of Pierce Ferry Rd. to Meadview, puts an emphasis on the progress which has taken place in this once little used region. With the development of Meadview and the opening of the South Cove launching ramp, traffic has increased to such an extent that it became necessary to provide an easier access to these now popular areas.

After a brief interview with County Road Supt., Lee Stevens, one becomes aware that Mohave County is striving with all their resources to keep abreast with the county's fast population growth.

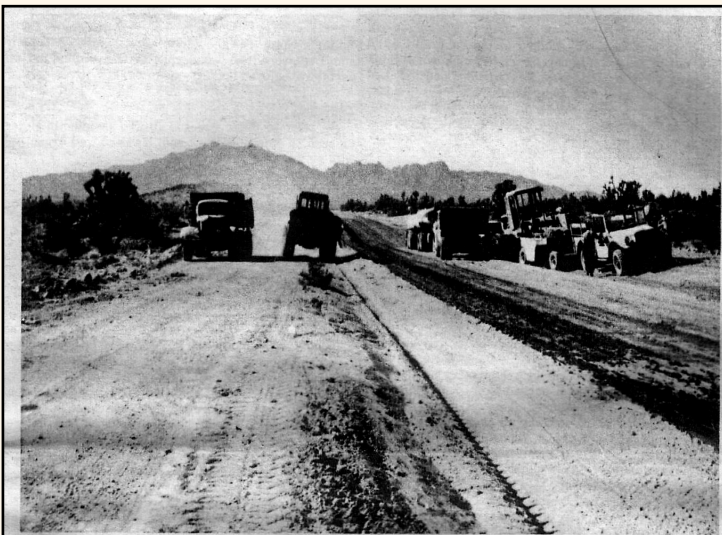
Many sportsmen including fishermen, boaters, skiers and swimmers are using this entry into the upper Lake Mead waters, as it saves many miles of driving for most.

This progress follows a true pattern of America's heritage—pioneer leaders blazed the first

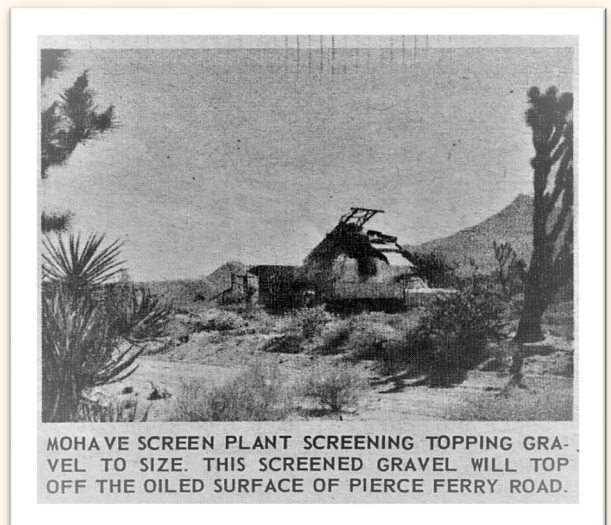
trail forming a path for others to follow. Next in line were a horse trail, wagon road, then bladed road, then as population in an area increased, a paved road, such as Mohave County is building along this presently much traveled thoroughfare.

The Meadview residents who were interviewed are very elated that this progress is coming their way and one had this to say, "now all the rock dodging and dusty trips will come to an end and many more people will come to visit and do just as we did, fall in love with this beautiful, exciting high desert country, with enough adventure at our front door to last a life time." another's comment was, "just wait until the boaters find out how easy it will be to get to the best darn fishing around."

Completion date for the paving is scheduled some time in the Fall and the Meadview Monitor will keep the public posted on latest developments.



COUNTY ROAD DEPARTMENT EQUIPMENT WORKING LOPE VALLEY A FEW MILES PAST THE END OF THE OVER PIERCE FERRY ROAD IN READINESS TO RECEIVING THE PAVING OIL. THIS SCENE IS ANTE-EXISTING PAVEMENT.



MOHAVE SCREEN PLANT SCREENING TOPPING GRAVEL TO SIZE. THIS SCREENED GRAVEL WILL TOP OFF THE OILED SURFACE OF PIERCE FERRY ROAD.

Law Enforcement Appreciation Dinner

Sponsored by

VFW Post 11014

Honoring Deputy Wes Bauer

Sunday, September 17th, 4:00 PM til 7:00PM
at the Meadview MCA auditorium

Tickets \$10.00 each

Available at the VFW Post

VFW Post 11014 Auxiliary News

September/October 2017

Greetings Unto One and All,

As we roll into Fall, the Meadview VFW has a multitude of programs and activities to invite you to attend.

In August, we began our Veteran Photo Shoot. This is for ALL Veterans in the Meadview Area. The Veteran's photo and service era will be featured in the Veterans Day issue of the Mohave Valley Daily News on November 11, 2017.

Other planned opportunities to catch Meadview Area Veteran's photos will be on Sunday, September 10, at the 2nd Sunday Spaghetti Dinner, from 5-7 PM, coinciding with a Silent Auction to benefit the 9/11 Fund that Donna Rose will be holding, the flag lowering for Patriot Day on 9/11 at 11:00 AM, the flag lowering and Table Setting Ceremony for POW/MIA Recognition Day on Friday, September 15, beginning at 11:00 AM, Karaoke on Saturday, September 16, from 5 to 7 PM, and at the VFW Post 11014 Officer Appreciation Dinner, honoring Deputy Wes Bauer on Sunday, September 17, from 4 to 7 PM.

Please join us in bringing special recognition to our Veterans.

October seems a world away but will be upon us soon. Look to postings regarding a Food Handler Class held at the VFW Post by the Mohave County Health Department the 3rd or 4th Thursday in October. Also, it is hoped to hold a Caregiver Luncheon, "For those that Care", during the month to share with others who give so much of themselves and are often overlooked.

Deadlines for VFW Scholarships, Voice of Democracy for grades 9-12, and Patriot Pen for grades 6-8, will be on October 31, 2017. If you have a student interested in a scholarship, please contact the VFW for information. The Scholarships are open to ALL students in the appropriate grade category.

We look forward to participating at Oktoberfest, Trunk-or-Treat, and other Community activities as they become known.

The VFW continues to hold Taco Tuesday from 5-7 PM, Burger Wednesday from 5-7 PM, Fish Friday from 5-7 PM, and 2nd Sunday all you can eat Spaghetti Dinner from 5-7 PM. Karaoke is the 3rd Saturday of each month. The community is always welcome to attend and support fund raising for Veteran's programs.

Please invite your Veteran to stop by and visit. We welcome Volunteers! If you might like to know what programs we offer and how you might help, stop in.

Serving our Veterans, Families and Community,

Jeanne Hampton, President, VFW 11014 Auxiliary

Quail Club News

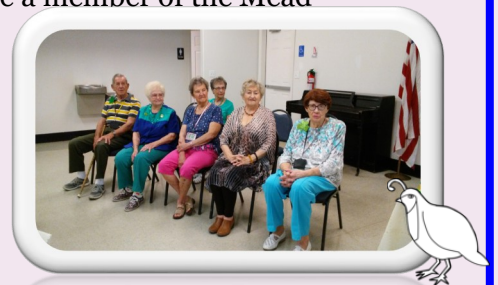
Carole Duran

Club Reporter

The Quail Club is an all-volunteer, Community and Family Interest Club. We have fund raisers throughout the year so that we can provide scholarships to local children. We meet at the MCA on the 3rd Tuesday of each month at 10:00am. At our monthly meetings we have raffles and throughout the year we sell See's Candy and Cookbooks. We also have bake sales, silent auctions and any other activities we can think of for acquiring funds for scholarships. We collect pennies, eyeglasses, Campbell soup labels, "Box Tops Education" labels and donations of raffle items. We also donate funds and collected items to various organizations.

Programs

On September 19th, the program will be a "Get acquainted Social and Potluck". On October 17th, the program will be "The course that changed my life" presented by Lucille Sunde. We will also have a special speaker, Lynne Durant. You don't have to be a member of the Meadview Quail Club to attend Quail meetings. Hope to see you there.



MEADVIEW COMMUNITY CHURCH

"A light at the Canyon's End"

(928) 564-2411

Service Schedule:

Sunday

9:30 AM Adult Class
10:45 AM Morning Praise and Worship

Wednesday

6:30 PM Bible Study

Friday

6:00 PM Choir practice

Communion is served the first Sunday of the month

Our Men's Breakfast is every second Tuesday of the month at 8:00 AM

Women's Bible Study is on the first and third Monday of the month at 9:30 AM

Red, White and Blue quilters meet at 9:00 AM on the third and fourth Thursdays of the month

Tune in to radio station KVIP at 90.9 FM for inspirational music and messages

Follow us on Facebook at **Meadview Community Church**

Pastor John Mulvihill

(301) 730-0727

MEADVIEW BAPTIST CHURCH

Sunday: 9:45 a.m. - Sunday School
11:00 a.m. - Worship Service

(Nursery is available during church services).

Tuesday: 2:00 p.m. - Cottage Prayer at Ann Woods Home, 200 Coral Isle Dr.

Thursday: 3:00 p.m. - Meal & Bible Study/Prayer Meeting in the Worship Center.

Saturday: 9:00 a.m. - Men's Breakfast First Saturday of each month.

Pastor Jack Schoenthaler

941-626-6182

www.meadviewbaptist.com

We would love to receive your photos of Meadview and the surrounding area. Those pics just might find a place in future *Meadview Monitor* publications and/or our website for other members to enjoy viewing.

Please submit photographs to our e-mail address: mca@citlink.net.

VFW GOOD EATS!

- **SECOND SUNDAY OF THE MONTH - SPAGHETTI FEED 5-7 P.M.**
- **TACO TUESDAYS 5-7 P.M.**
- **HAMBURGER WEDNESDAYS 5-7 P.M.**
- **FISH FRIDAYS 5-7 P.M.**
-

SERVED TO THE PUBLIC

COME JOIN US!

**MANNA FOOD DISTRIBUTION
IS ON THE FIRST THURSDAY OF
THE MONTH BETWEEN 7-10 A.M.
AT 330 E. MEADVIEW BLVD.**

(Meadview Plaza next to View Video)

**CALL 928-218-1654 FOR
INFORMATION**

SEPTEMBER 2017

| Sun | Mon | Tue | Wed | Thu | Fri | Sat |
|---|-----------------------------------|----------------------------|-----------------------------------|--|---|---|
| | | | | | 1 BINGO 1 - 4:30 p.m. | 2 |
| 3 | 4 SPLASH DANCE 9 - 11 a.m. | 5 BINGO @ 6:30 p.m. | 6 SPLASH DANCE 9 - 11 a.m. | 7 MANNA Food Distribution from 7- 10 a.m. | 8 SPLASH DANCE 9 - 11 a.m. BINGO 1 - 4:30 p.m. | 9 MCA Membership Meeting @ 9 a.m. |
| 10 | 11 SPLASH DANCE 9 - 11 a.m. | 12 BINGO @ 6:30 p.m. | 13 SPLASH DANCE 9 - 11 a.m. | 14 | 15 SPLASH DANCE 9 - 11 a.m. BINGO 1 - 4:30 p.m. | 16 |
| 17 ^{Law} Enforcement Appreciation Dinner Honoring Deputy Wes Bauer 4 - 7 p.m. | 18 SPLASH DANCE 9 - 11 a.m. | 19 BINGO @ 6:30 p.m. | 20 SPLASH DANCE 9 - 11 a.m. | 21 | 22 SPLASH DANCE 9 - 11 a.m. BINGO 1 - 4:30 p.m. | 23 |
| 24 | 25 SPLASH DANCE 9 - 11 a.m. | 26 BINGO @ 6:30 p.m. | 27 SPLASH DANCE 9 - 11 a.m. | 28 | 29 SPLASH DANCE 9 - 11 a.m. BINGO | 30 |

OCTOBER 2017

| Sun | Mon | Tue | Wed | Thu | Fri | Sat |
|-----|-----------------------------------|----------------------------|-----------------------------------|--|--|--|
| 1 | 2 | 3 BINGO @ 6:30 p.m. | 4 SPLASH DANCE 9 - 11 a.m. | 5 MANNA Food Distribution from 7- 10 a.m. | 6 SPLASH DANCE 9 - 11 a.m. BINGO | 7 |
| 8 | 9 SPLASH DANCE 9 - 11 a.m. | 10 BINGO @ 6:30 p.m. | 11 SPLASH DANCE 9 - 11 a.m. | 12 | 13 SPLASH DANCE 9 - 11 a.m. BINGO | 14 MCA Membership Meeting @ 9 a.m. |
| 15 | 16 SPLASH DANCE 9 - 11 a.m. | 17 BINGO @ 6:30 p.m. | 18 SPLASH DANCE 9 - 11 a.m. | 19 | 20 SPLASH DANCE 9 - 11 a.m. BINGO | 21 |
| 22 | 23 SPLASH DANCE 9 - 11 a.m. | 24 BINGO @ 6:30 p.m. | 25 SPLASH DANCE 9 - 11 a.m. | 26 | 27 SPLASH DANCE 9 - 11 a.m. BINGO | 28 |
| 29 | 30 SPLASH DANCE 9 - 11 a.m. | 31 BINGO @ 6:30 p.m. | | | | |

Please do not send your debit/credit card information or cash through snail mail. Also, please do not provide us with your debit/credit card information through an e-mail. These are not secure places for such important and sensitive information.

_____ E-mail Address:

_____ Phone #:

_____ Alt. Phone #:

_____ City: _____ State: _____ Zip Code: _____

_____ Address:

_____ Care of (if you are caring for the owner's property): _____

Property Owner Name: _____

Information Update/Change form

I want to receive E-Billing.

Meadview Monitor

Meadview Civic Association, Inc.
247 E. Meadview Blvd.
P.O. Box 217
Meadview, AZ 86444

Phone: 928-564-2313
Fax: 928-564-2520
E-mail: mca@citlink.net
Website: mca-az.com

