

# Meadview Monitor

September/October  
2016

## INSIDE THIS ISSUE

Disclaimer .....	2
Board of Governors .....	2
Employees .....	2
Friends of the Arizona Joshua Tree Forest .....	2
Open Letter to Our Members ..	3
Wheel of Activity .....	4
LMRFD Review .....	5
Potluck Schedule .....	5
Blast From the Past .....	6, 7 & 8
Christmas Craft Show .....	8
Billing & Payments Options...	8
VFW Auxiliary News .....	9
Church News .....	10
Sept./Oct. Calendar .....	11
Information Update/Change & E-Billing Request .....	12

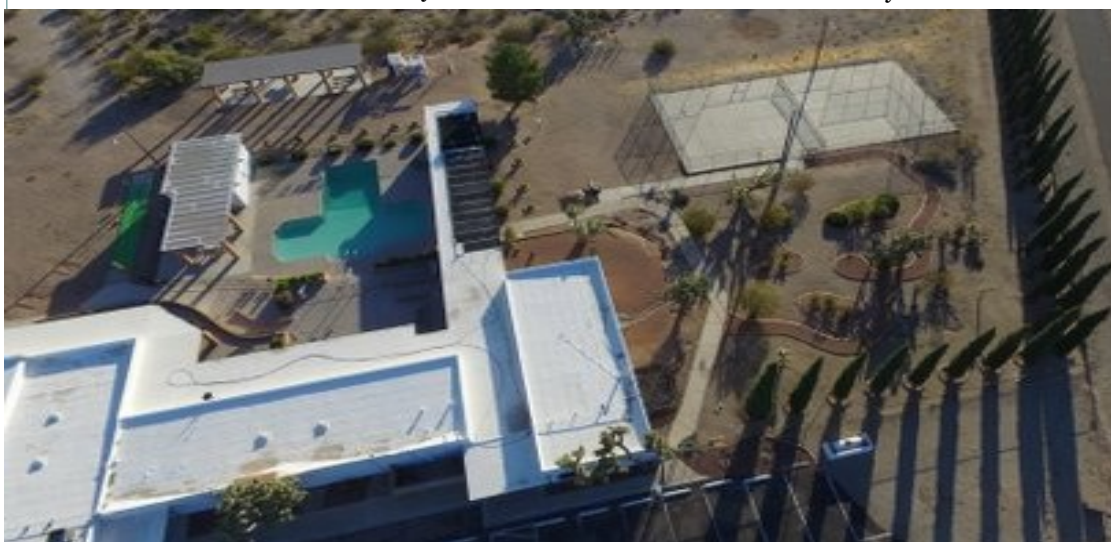


"MCA from the Sky"

Photo By Ronald Bernstein

## SPECIAL POINTS OF INTEREST

- Check out the Blast From The Past.
- 9/11 "Patriot Day" Remembrance
- LMRFD making progress on budgeting
- Red Cross representatives coming in September for C.O.M.
- Joshua Tree Documentary coming to Meadview!
- MCA Pot Luck Volunteers Needed for 2017





## BOARD OF GOVERNORS

Don Jarvis.....President  
 Lori Rodgers-Roll.....Vice-President  
 Ray Stone.....1st Vice-President  
 Steve Berg.....2nd Vice-President  
 Neil Baker.....3rd Vice-President  
 Joy Luke.....Treasurer  
 Lynn Wright-Murray.....Secretary

## MCA EMPLOYEES

Edie Needham....Member Services &  
 Contributing Editor  
 Sandy Henderson...Member Services  
 & Contributing Editor  
 Darrell Young...Maintenance  
 Larry Minard...Maintenance &  
 Security  
 Bob Reynolds...Security

### Facility Hours

Open from 8 a.m. to 10 p.m.  
 7 days a week

### Office Hours

Tuesday - Saturday  
 9 a.m. to 4 p.m.  
 Closed from 12 p.m. to 12:30 p.m.  
 for lunch

## ***“Meet & Play At The MCA”***

### DISCLAIMER:

The Meadview Monitor is an official publication of the Meadview Civic Association (MCA, a membership association) P.O. Box 217, Meadview, AZ 86444. (928) 564-2313, Fax (928) 564-2520, or email: [mca@citlink.net](mailto:mca@citlink.net) (please put “Meadview Monitor” in the subject line.) Notice in the Meadview Monitor is official notice of any and all proceedings of the MCA.

Submissions become the property of The Meadview Monitor. We will not publish any letters or ads that are unsuitable for this newsletter or for which the MCA be held liable. The Board of Governors will make the final decisions on those letters, ads and/or articles that are printed. All articles must have a by-line. All letters must have a name and a traceable address.

## **Friends of the Arizona Joshua Tree Forest**

*"We have fallen heirs to the most glorious heritage a people ever received, and each one must do his part if we wish to show that the nation is worthy of its good fortune."*

**- Theodore Roosevelt, President of the United States**

Our Friend's Group would like to announce that the Kingman BLM Office has appointed new permanent staff for the Field Manager and Assistant Field Manager positions. We are very encouraged by their appointments and look forward to working closely with them on projects to protect the AZ Joshua Tree Forest. The BLM values, respects and encourages Volunteer groups, like our Friends of the AZ Joshua Tree Forest, to participate in planning activities. We intend to

schedule a tour of the Joshua Tree Forest in the fall for our new BLM Staffers. We are confident that we will continue to have a positive working partnership with all interested in this preservation group.

### **Come join us!**

**Annual membership fees -**  
**single/couple \$25, family**  
**\$45. For more information**  
**check out our website at:**  
[www.joshuatreeforest.org](http://www.joshuatreeforest.org)

## OPEN LETTER TO OUR MEMBERS

As a member of the Meadview Civic Association, you may wonder what your yearly assessment of \$40 provides. The Board of Governors thought this would be an opportunity to, again, remind our members of the many advantages of belonging to the Meadview Civic Association. On the next page, we have shown the “wheel” of activities and the many groups that utilize and enjoy MCA facilities throughout the whole year.

In addition to the groups on the following “wheel” we also provide a pool with a shaded lanai area; an indoor lounge which includes pool tables, wide screen TV and free internet, all located around a cozy fireplace. We have a children’s play area, a nature walk with a fountain, a mini golf course, a tennis/basketball court, outside barbeques and shuffle board and horse shoe areas.

Our “state of the art” kitchen provides our members with monthly pot lucks. The kitchen may also be used for special events planned by our members. Our large auditorium is available for weddings, birthday parties, family reunions and other special occasions. We donate the use of our auditorium for local and national elections, as well, as special meetings to address public concerns for all Meadview residents. There is absolutely **“No Charge”** for any of these services and benefits.

Our outstanding office staff is always available to provide additional services. These include a notary, copying and faxing documents, as well as, helpful information regarding local businesses. Some legal forms are also available.

During this last year, we were able to repave our parking lot and install air conditioning in the auditorium.

Although you may think you don’t have an opportunity to enjoy all the things offered, these additional services have increased the value to every property in our community. It also unites our community to stand against unlawful building, camping and/or squatting. Many other desert communities do not have the privilege of this protection. The small amount of \$40 each year is providing much value to each and every one of us.

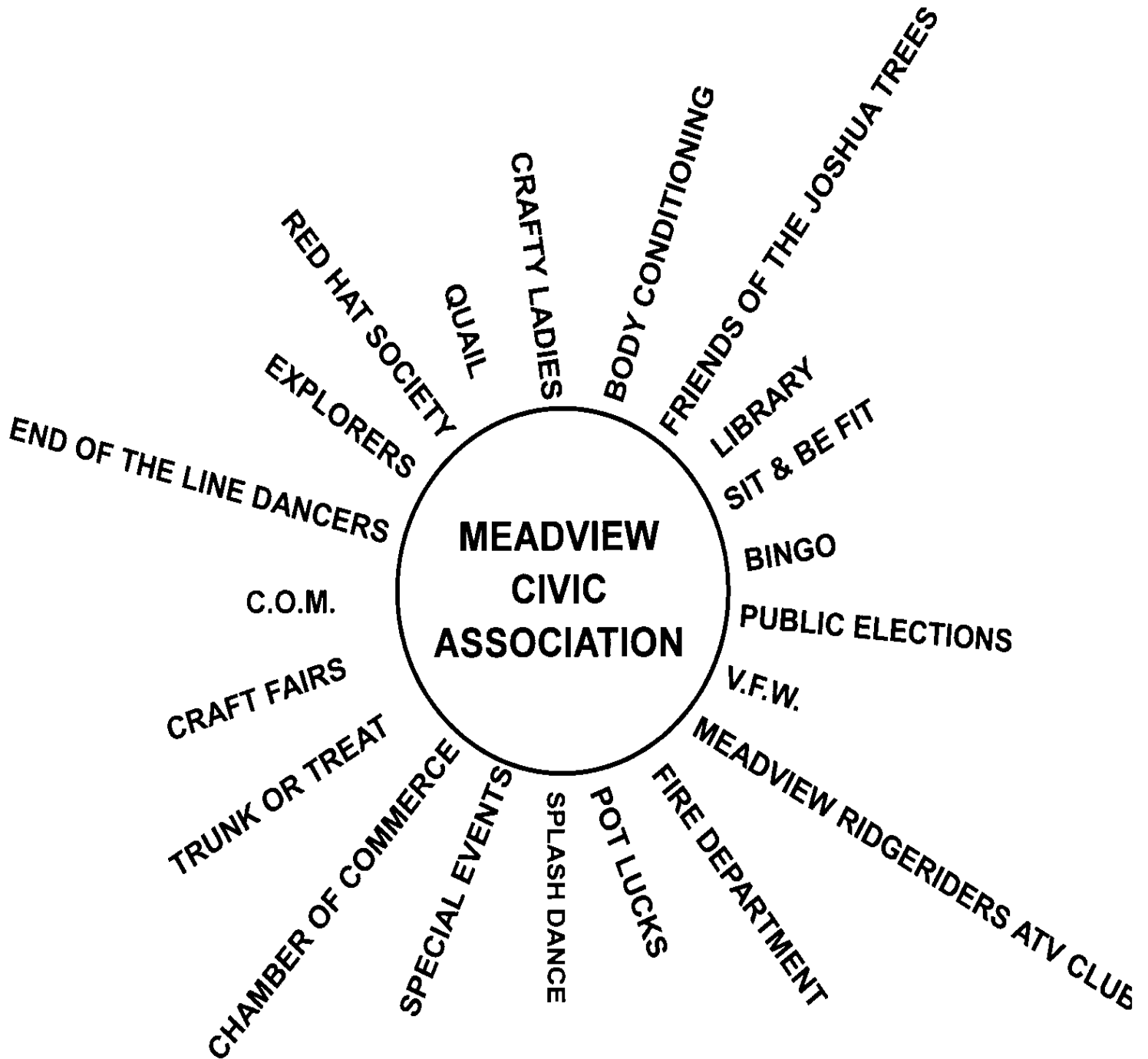
Our office bulletin board shows times and dates of all regular and special events. Our monthly membership meetings are held on the second Saturday of each month.

We encourage you to attend these meetings to receive information regarding **“your”** organization and community.

Please join us!

Meadview Civic Association  
Board of Governors

## ACTIVITIES SUPPORTED BY THE MEADVIEW CIVIC ASSOCIATION



**ALL OF THESE ACTIVITIES ARE SUPPORTED BY THE MCA.  
MOST ORIGINATED BY HOLDING THEIR FORMATION MEETINGS AT  
THE FACILITY, AND MOST STILL HOLD THEIR REGULAR  
MEETINGS HERE TO THIS DAY.**

## Tad's Auto & Marine Service & Repair

ASE Certified Mechanic

A/C Tune ups

Brakes

Suspension Computer Diagnostics

Tire Repair



## Tad's Boat & RV Storage

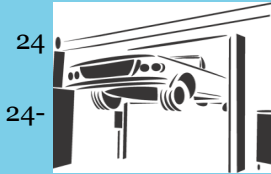
Covered & Uncovered

ft. To 36 ft. Covered

ANY SIZE Uncovered

Hour Access

Gate Code Entry



27070 N Pierce Ferry Road

Meadview, AZ 86444

(928) 564-2855

## ADVERTISEMENT RATES

### This is a Bi-Monthly Publication.

*Business Card* - \$6 per issue or \$36 per year.

*1/4 Page* - \$10 per issue or \$60 per year.

*Half Page* - \$20 per issue or \$120 per year.

*Full Page* - \$40 per issue or \$240 per year.

Please make check payable to:  
Meadview Civic Association or  
MCA

P.O. Box 217

Meadview, AZ 86444

### NOTE:

- \* All ads must be paid in advance.
- \* The MCA reserves the right to edit or refuse ads or submissions.
- \* Sorry, no refunds for cancellations.

## Lake Mohave Rancho Fire Department REVIEW

By Suzann Newell



The regular monthly LMRFD Board meeting was held in Dolan

on July 18. All members were present. Interim Chief Tony DeMaio reported that staffing has been changed to allow POC personnel to be called if needed which will save money. He also stated that the phone bills have been reduced: Station #41 from \$413 a month to \$254 and Station #43 from \$210 a month to \$120. While DeMaio is on vacation those duties will be handled by the chief of Golden Valley and Mike Pettway of LMRFD. Chairman Steve Berg announced that Chase Bank may do a Line of Credit. It was suggested that the use of private warrants

might be cheaper than the Line of Credit. Board member David Anthony will assist with writing grants. Worker's Compensation Insurance was approved.

Property Tax bills will be mailed out in September, with payment due October 1. Members suggested that organizations in our communities announce that LMRFD needs the money from taxes to be able to continue providing the emergency services of EMT's and firefighters. The Board members hope to meet with the Board Supervisors. The next meeting will be held at the MCA facility in Meadview on August 15 at 1:30 p.m. The September meeting will be held in Dolan on September 19 at 1:30 p.m. Meadview residents are urged to attend.

## MCA Potluck Schedule

We would like to invite you to our monthly potlucks, which are listed below. Please sign up in the Meadview Civic Association office or call the ladies at (928) 564-2313.

**August 27th @ 5:30 p.m.** Pulled Pork

**September 24th @**

10 a.m.

Breakfast Brunch

**October 22nd @ 5:30 p.m.**

Baked Potato Bar

**November 24th @ 2 p.m.**

Thanksgiving Feast

(Thanksgiving Day)

**December NO POTLUCK** but we would like to wish everyone a MERRY CHRISTMAS & HAPPY NEW YEAR!



**PLEASE SIGN UP! WE WOULD LIKE TO KNOW HOW MANY TO COOK FOR.**

## BLAST FROM THE PAST

*Quartermaster Lookout - Bat Mine By Jackie Brown; May, 1967*

"A good time was had by all," seems an appropriate phrase, when applying it to the Auto Caravan trip taken to the Bat Cave Tower and Quartermaster Lookout points, recently. For everyone really DID seem to have a good time and all expressed their delight at having gone.

True, it wasn't everyone who would stand on the edge of the ledge and look over, but by and large, most of the folks were real brave and did at least sneak a peak.

If you don't know what I'm talking about, let me explain. In Saturday, April 8, 1967, a large group met at the Meadview Marina store, including yours truly and hubby, Hal Brown. Our destination was to the south rim of the lower Grand Canyon and specifically to Quartermaster Lookout and to the towers that overlook the bat cave on the opposite side of the Colorado River. Each of these viewpoints hold a fascination of their own and each has a story to tell, but will go in to that a bit later.

"Take off" time was 9:00 a.m. and the caravan departed pretty much on schedule. About half the vehicles were conventional automobiles and the other half pickups with campers. Our conveyance falls in either category as its part car and part pickup, one of those 2 seater, 4

door jobs with a truck bed on the back. The manufacturer calls it a Crew Cab so guess that's good enough.

Hal and I, along with Martha and Ed Lopez, were in the lead



car and equipped with a Citizens Band radio. Fourteen vehicles back, our follow-up car, manned by Frank and Clo George, was also equipped with the same.

These radios allowed direct contact fore and aft, and this instituted as a precaution in the event a n y o n e experienced car trouble, or for any emergency. The two way contact worked beautifully but was not very conducive to g e n e r a l conversation within the

Crew Cab, and this was a terrible blow to two women who wanted to talk.

The first part of the took us through the large, nearby, Joshua forest, and this is an experience in itself if you have never seen Joshuas. These particular one are the largest we have ever seen anywhere, and are almost gargantuan in appearance, with their great huge limbs reaching out in all directions.

Next, we passed by the Diamond Bar Ranch where Suzie and little Joy Kump greeted us with a hello and goodbye. Here, the first ranch gate is encountered with another in close succession.

***Continued on Page 6***

**SPRAY FOAM ROOFING**  
Recoating Contractor

Spray Foam Insulation

Discount

**URETHANE-FOAM-ROOFING**

**FLAT ROOF SPECIALIST**

Recoating & Repair

Elastomeric Roof Coating

New Construction ■ Flat Roofs

Insulation ■ Metal Buildings

Re-Roofing ■ Mobile Homes

Lic # 255400

**928-234-2020**

**760-777-3533**

## BLAST FROM THE PAST

Quartermaster Lookout - Bat Mine By Jackie Brown; May, 1967

*Continued from Page 6*

With the nasty business of opening and closing gates out of the way, for a while, the string of cars processed up through a rather rugged and interesting canyon, rising in elevation all the time. It is along these hillsides that the vegetation starts to change to the Junipers, Pinon Pine, some Cedars and the Century Plant. A complete change of scenery.

Once out of the hilly terrain, the road levels off and soon the fence to the Hualapai Indian Reservation is in sight, with another gate. After dispensing with that barbed barrier, we took off for our final destination traveling through an entirely different kind of county, a flat grassy mesa.

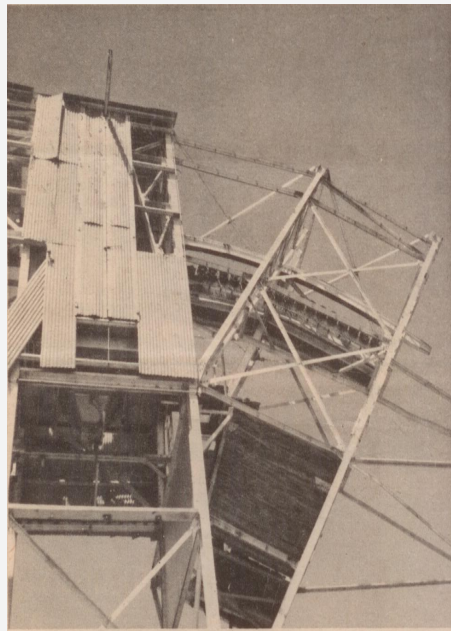
With noting to obstruct our view, it is here you first begin to see the colorful and rugged formations of the Lower Grand Canyon, with their pink, lavender and hazy blue bluffs staring right at you.

These bluffs, on the north rim, are actually across the canyon from where we are going.

With in a half hour the caravan had started to skirt the top and the edge of the south rim of the canyon walls themselves; and had all the vehicles bee "bugged," I'm sure we would have heard plenty of oohs and aahs. This is when the term, awe

inspiring, applies, for the scene before you leaves one at a loss for words. The color and the depths of these canyon walls become too hard for this neophyte writer to describe.

It is at this point where the towers of the bat mine operation are located and where our group had lunch, and it would be pretty safe to say that everyone was quite captivated with the scenes before them.



This is what we have learned about the history of the bat mines. Several years ago some enterprising concern decided to mine bat guano from the bat caves, which are located on the north side of the Colorado River, at an inaccessible point on that side. Not to be outdone, a tower was built on the south rim, and from this structure a cable was strung high across the river to

the cave on the other side. Gondolas were hung from the cable to ferry the men across, and once over there the mining of the guano began.

Standing on this point, underneath the tower, you realize what a tremendous fete the building of that installation was. That, plus all the natural beauty of the terraced

*Continued on Page 8*



### UPCOMING EVENTS FOR 2016

**September 3rd, Labor Day  
Band Party;**

**October 29th, Halloween  
Costume Band Party;**

**November 12th,  
Thanksgiving Pot Luck  
Dinner;**

**December 10th,  
Christmas Sweater  
Karaoke Party;**

**December 31st, New Years  
Eve Band Party**



**290 E. Meadview Blvd,  
Meadview, AZ 86444**

**(928) 564-2100**

## BLAST FROM THE PAST

Quartermaster Lookout - Bat Mine By Jackie Brown; May, 1967

*Continued from Page 7*

canyon walls, which seem to have been carved with a knife; and along with that the



rainbow of muted colors, well, it just about becomes more than one can grasp.

Tis profound evidence of man and nature is only marred by the fact that one day, a few years back, a low flying plane out an end to this spectacular crossing over the river.

Flying down between the canyon walls themselves, someone in a frisky jet, happened to hit the cable with the tip

of the plane's wing, and though the culprit came out unscathed, the impact broke the cable and that was the end of mining bat guano.

After a leisurely lunch, the vehicles once more lined up single file, behind the Crew Cab and within a short distance we were at Quartermaster Lookout. Elevation, approximately 5,000 feet.

This point may not have as colorful a history as the Bat Cave Towers it is equally, if not more impressive. One can drive right to the edge of the precipice (if they so desire), but all chose to walk; for here the cliffs just drop off into an empty void, straight down. Something like 3,000 feet.

Far below, wending its snaky way in and around the canyon walls, is the murky

Colorado River, seemingly no wider than a strip of highway.

Quartermaster Lookout, we understand, came by its name from an old navy man, who noted the resemblance of one of the bluffs, to a ship. And it really does look like a large vessel sitting there.

To demonstrate the depth and the perpendicular angle of that particular part of the canyon wall, Hal stood on a jutting ledge and tossed large rocks down below. He made his point very well and soon others were also heaving and tossing, and all this bit of by-play literally turned yours truly's stomach up side down. It was with a sigh of relief then, when the call came to head homeward.

The return trip brought us back to Meadview in plenty of time for a short respite before the Sportsman's Barbeque commenced. Filing our tummies with those heavenly steaks seemed a perfect end to a perfect day.

## MCA Annual Christmas Craft Show

November 26th 9 am-2 pm

- \* Sign-up and pick your table at the MCA office.
- \* You may pick more than one table for \$5.00 each.
- \* First come, First serve on tables.
- \* No Refunds if you're a No Show.

There will be a Bake Sale by Quail and a gift draw during the show.

If you have any questions please call:

760-638-2011,

928-564-2373 or

928-564-2342

\* \* \*

## VOLUNTEERS NEEDED

\* \* \*

After approximately four years of dedicated service, our Pot Luck Ladies will be pursuing other activities. But they have agreed to serve us until next April 2017.

In order to continue providing monthly pot lucks for our members and their guests, new volunteers will be needed. Perhaps some of our male members will consider offering their culinary skills.

## MCA Payment and Billing Options

### Payment Options:

**Bill Pay** through your bank. Automatic payment sent by the member from their bank account and a check will be made out and mailed to the MCA from your bank.

**Credit Card Payments** by calling or coming into the office.

**Check, Money Order or Cashier's Check** either mailed or handed to the office staff. Most property owners are already utilizing this option. The change is that the checks are now electronically deposited within a week of receiving them.

**Cash** payments are always welcome. Bring cash payments to the office. Please do not mail cash payments.

### Billing Options:

**E-Billing**— Need to provide the office with your e-mail address.

1. You can fill out the Update form on the last page of this Monitor issue and mail it to us.
2. You can send us an e-mail. In the subject line write **E-Billing Request**. In the body provide all of your information including your preferred E-Billing address. **Please provide either your lot # or the Assessor's Parcel #.**

When the next billing cycle starts you will receive an E-Bill for every lot owned instead of a paper bill via snail mail.

**Snail Mail** no need to do anything to request this option as it is our default option.

## VFW Post 11014 Auxiliary News

We have three very special events coming up in September that we wanted to let you know about so you can mark your calendar and plan on attending. All sponsored by the VFW Auxiliary.

**Sunday, Saturday 11- "Patriot Day"** also known as The National Day of Service and Remembrance occurs each year in memory of those killed during the Sunday, September 11, 2001 terrorist attacks.

- 11:00 Flag Ceremony - A light lunch will be served following for a donation.
- Silent Auction items will be on display throughout the day. (Items will also be on display for preview all day on Saturday.)
- All You Can Eat Spaghetti from 5 - 7 for \$7.00.
- Auction to end around 6:00 p.m.
- All proceeds to benefit the 9/11 Fund.

Donations graciously accepted for Silent Auction items. Please sign-up and donate at the VFW.

### **Friday, September 16 - "POW/MIA Remembrance"**

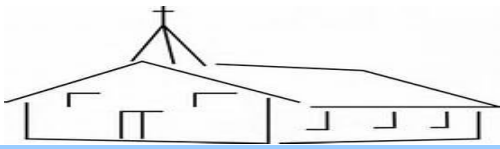
- 11:00 Flag Ceremony Full Table Ceremony to follow. This is such a moving experience that everyone should attend to honor our POW's/MIA's.
- A light lunch will follow for a donation.

### **Sunday, September 25- "Gold Star Mother's/Family Day"**

So far we have the name of one local mom. Please help us in identifying any others. We want to recognize these Moms' Gold, Blue and Silver. Let the VFW volunteers know so we can show our respect by presenting a Certificate of Appreciation to these Moms.

Thank You for your support of our Veterans and their families.

Rhonda Follett, Auxiliary President  
Donna Rose, Senior Vice-President & Americanism Chair



## MEADVIEW BAPTIST CHURCH

- Sunday:** 9:45 a.m. - Sunday School  
11:00 a.m. - Worship Service
- Monday:** 9:30 a.m. - Women's Bible Study, the 1st and 3rd Monday of each month in the Fellowship Hall
- Tuesday:** 2:00 p.m. - Cottage Prayer at Ann Woods Home, 200 Coral Isle Dr.
- Wednesday:** 3:00 p.m. - Men's Bible Study in the Classroom Bldg.
- Thursday:** 3:00 p.m. - Meal & Bible Study/Prayer Meeting in the Classroom Bldg.

Pastor Jack Schoenthaler  
[www.meadviewbaptist.com](http://www.meadviewbaptist.com)  
**564-2341**

## MEADVIEW COMMUNITY CHURCH

This is our regular schedule of services:

- Sunday:** Sunday School at 9:45 and Morning Worship at 10:45 with the observance of Holy Communion the 1<sup>st</sup> Sunday of each month.
- Wednesday:** Midweek Bible Study & Prayer Service at 6:30 p.m. Ladies Bible Study on the 1<sup>st</sup> & 3<sup>rd</sup> Wednesdays at 10:00 a.m.
- Friday:** Choir Practice at 6:30 p.m. Men's Breakfast will take place on the Tuesdays of January 12th, February 9th and March 8th at 8:00 a.m. in our fellowship hall.

Our monthly potluck lunch usually follows the morning worship service on the 3<sup>rd</sup> Sunday of each month. We want all of our friends and neighbors to know that they are always welcome to worship with us at Meadview Community Church.

Pastor John Mulvihill

**564-2411**

## MEADVIEW LAKE MOTEL

*Where Lake Mead meets the Grand Canyon*

30205 N. Escalante Blvd.  
 Meadview, AZ 86444  
 (928) 564-2343



- All Queen size beds
- Refrigerators
- Color TVs
- Newly Remodeled Units
- Large Rooms
- Air Conditioning



Owner:  
 Virginia Pagano  
 Manager:  
 Mary Allsman

**JOIN US FOR SPLASH DANCE OR A COOL SWIM  
 WHENEVER YOU PLEASE!**

**DON'T FORGET TO SIGN UP FOR OUR MONTHLY  
 POTLUCK!**



*These functions and times may change.*

*If you have any questions, please check with the group you have interest in.*

## MOHAVE RANCHO LUMBER



**GENERAL CONTRACTOR**  
 Specializing in: Water & Septic Systems  
 Manufactured Home Site Preparation

**FRANK GERACI**

ROC: 101886 \* 149886 \* 217244 \* 252832

14500 N. Pierce Ferry Road  
 Dolan Springs, AZ 86441

(928) 767-3339  
 Fax: (928) 767-6245

# SEPTEMBER 2016

Sun	Mon	Tue	Wed	Thu	Fri	Sat
				1 C.O.M. @ 8:30 am	2 Body Cond @ 8 am Bingo @ 1 pm	3 Meadview Ridgeriders ATV Club @ 9 am
4	5 Body Cond @ 8 am	6 Crafty Ladies @ 1 pm Bingo @ 6:30 pm	7 Body Cond @ 8 am	8 Red hats Society @ 1:30 pm	9 Body Cond @ 8 am Bingo @ 1 pm	10 Membership Meeting @ 9 am
11	12 Body Cond @ 8 am	13 Crafty Ladies @ 1 pm Bingo @ 6:30 pm	14 Body Cond @ 8 am Explorers @ 6:30 pm	15	16 Body Cond @ 8 am Bingo @ 1 pm	17
18	19 Body Cond @ 8 am LMRFD @ 1:30 pm	20 Quail @ 8:30 am Crafty Ladies @ 1 pm Bingo @ 6:30 pm	21 Body Cond @ 8 am	22	23 Body Cond @ 8 am Bingo @ 1 pm	24 Breakfast Brunch @ 10 am
25	26 Body Cond @ 8 am	27 Crafty Ladies @ 1 pm Bingo @ 6:30 pm	28 Body Cond @ 8 am	29	30 Body Cond @ 8 am Bingo @ 1 pm	

# OCTOBER 2016

Sun	Mon	Tue	Wed	Thu	Fri	Sat
						1 Meadview Ridgeriders ATV Club @ 9 am
2	3 Body Cond @ 8 am Sit/Be Fit @ 10:15 am	4 Crafty Ladies @ 1 pm Bingo @ 6:30 pm	5 Body Cond @ 8 am Sit/Be Fit @ 10:15 am	6 C.O.M. @ 8:30 am	7 Body Cond @ 8 am Sit/Be Fit @ 10:15 am Bingo @ 1 pm	8 Membership Meeting @ 9 am
9	10 Body Cond @ 8 am Sit/Be Fit @ 10:15 am	11 Crafty Ladies @ 1 pm Bingo @ 6:30 pm	12 Body Cond @ 8 am Sit/Be Fit @ 10:15 am Explorers @ 6:30 pm	13 Red hats Society @ 1:30 pm	14 Body Cond @ 8 am Sit/Be Fit @ 10:15 am Bingo @ 1 pm	15
16	17 Body Cond @ 8 am Sit/Be Fit @ 10:15 am	18 Quail @ 8:30 am Crafty Ladies @ 1 pm Bingo @ 6:30 pm	19 Body Cond @ 8 am Sit/Be Fit @ 10:15 am	20	21 Body Cond @ 8 am Sit/Be Fit @ 10:15 am Bingo @ 1 pm	22 Baked Potato Bar @ 5:30 pm
23	24 Body Cond @ 8 am Sit/Be Fit @ 10:15 am	25 Crafty Ladies @ 1 pm Bingo @ 6:30 pm	26 Body Cond @ 8 am Sit/Be Fit @ 10:15 am	27	28 Body Cond @ 8 am Sit/Be Fit @ 10:15 am Bingo @ 1 pm	29
30	31 Body Cond @ 8 am Sit/Be Fit @ 10:15 am Trunk or Treat @ Dusk					

Please do not send your debit/credit card information or cash through snail mail. Also, please do not provide us with your debit/credit card information through an e-mail. These are not secure places for such important and sensitive information.

E-mail Address: \_\_\_\_\_

Phone #: \_\_\_\_\_ Alt. Phone #: \_\_\_\_\_

City: \_\_\_\_\_ State: \_\_\_\_\_ Zip Code: \_\_\_\_\_

Address: \_\_\_\_\_

Care of (if you are caring for the owner's property): \_\_\_\_\_

Property Owner Name: \_\_\_\_\_

☐ I want to receive E-Billing.

Information Update/Change form

**Meadview Monitor**  
Meadview Civic Association, Inc.  
247 E. Meadview Blvd.  
P.O. Box 217  
Meadview, AZ 86444

Phone: 928-564-2313  
Fax: 928-564-2520  
E-mail: [mca@citlink.net](mailto:mca@citlink.net)  
Website: [mca-az.com](http://mca-az.com)

