

Meadview Monitor

MEET &
PLAY at ~

MCA
MEADVIEW, AZ

November/December

2017



Photo by Rhonda Monroe

INSIDE THIS ISSUE

Disclaimer.....	2
Letter from the Board.....	3
Quail Club News.....	4
Santa's Coming to Town!.....	5
Friends of the Arizona Joshua Tree Forest.....	6
Explorers and Over The Hill Hikers News.....	7
Blast From The Past.....	8
VFW News.....	9
Calendar of Events.....	10

SPECIAL FEATURES

History on the Boulevard- Fun Facts.....	7
---	---





BOARD OF GOVERNORS

Don Jarvis.....President
 Ray Stone.....Vice President
 Dennis Kehoe.....Treasurer
 Lynn Wright Murray.....Secretary
 Steve Berg.....Governor
 Elizabeth Buckingham...Governor

MCA EMPLOYEES

Edie Needham....Member Services
 Supervisor & Contributing Editor
 Sandy Henderson...Member
 Services Representative
 & Contributing Editor
 Darrell Young...Maintenance
 Larry Minard...Maintenance &
 Security
 Bob Reynolds...Security
 Richard (Woody) Wood...Security

*“Meet &
 Play At
 The
 MCA”*

Facility Hours

Open from 8 a.m.—10 p.m.
 7 days a week

Office Hours

Tuesday—Saturday
 9 a.m.—4:30 p.m.
 Closed from 12 p.m.—12:30 p.m.
 for lunch

DISCLAIMER:

The Meadview Monitor is an official publication of the Meadview Civic Association (MCA, a membership association) P.O. Box 217, Meadview, AZ 86444. (928) 564-2313, Fax (928) 564-2520, or email: mca@citlink.net (please put “Meadview Monitor” in the subject line.) Notice in the Meadview Monitor is official notice of any and all proceedings of the MCA.

Submissions become the property of The Meadview Monitor. We will not publish any letters or ads that are unsuitable for this newsletter or for which the MCA be held liable. The Board of Governors will make the final decisions on those letters, ads and/or articles that are printed. All articles must have a by-line. All letters must have a name and a traceable address.

ADVERTISEMENT RATES

This is a Bi-Monthly Publication.

Business Card - \$6 per issue or \$36 per year.

1/4 Page - \$10 per issue or \$60 per year.

Half Page - \$20 per issue or \$120 per year.

Full Page - \$40 per issue or \$240 per year.

Please make check payable to:
 Meadview Civic Association or MCA
 P.O. Box 217
 Meadview, AZ 86444

NOTE:

- * All ads must be paid in advance.
- * The MCA reserves the right to edit or refuse ads or submissions.
- * Sorry, no refunds for cancellations.

LETTER FROM THE BOARD

Your MCA staff is preparing for 2017 to end with various activities. Edie is reupholstering the sofas in the pool room. The cushions are complete and are in the meeting room for those who would like to see them. Please see the office staff for access.

Darrel is replacing the webbing straps on various chairs around the pool area. That will give him some work inside when the temperature drops this winter.

By the end of October the swimming pool season will be ending and the solar heating panels will be disconnected for the winter.

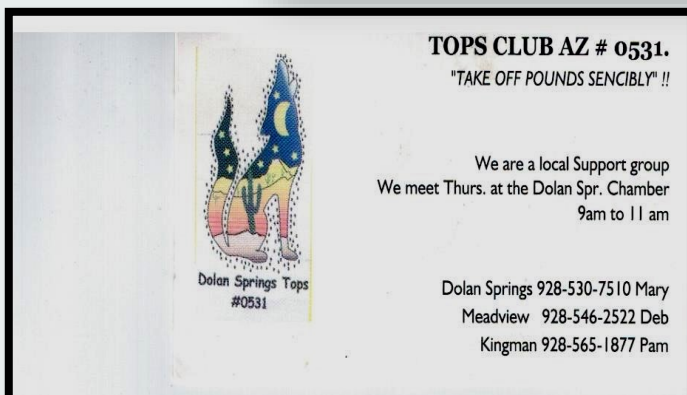
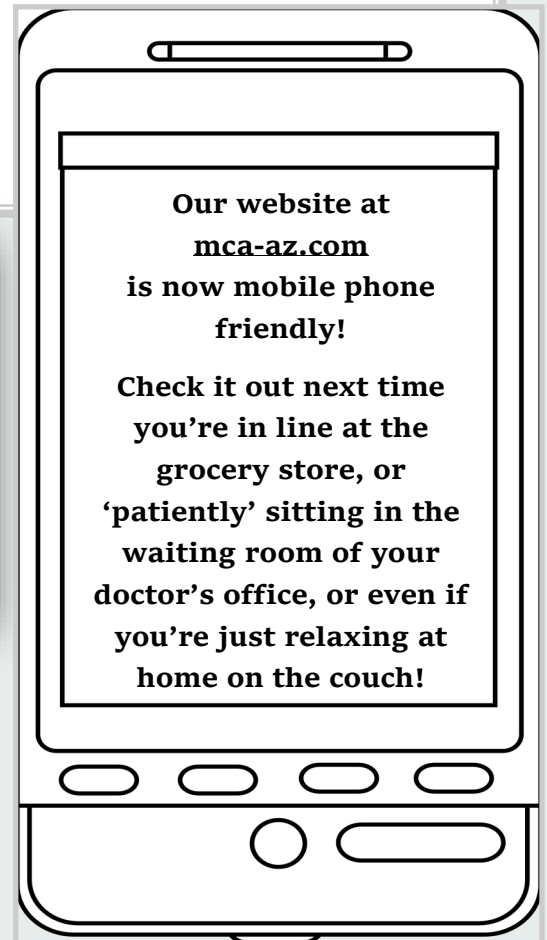
The kitchen will no longer be locked. When members need to store items in the fridge it will be necessary to identify the owner and the date the item was placed in storage. There will be labels on the door to use for this purpose. If that is not done the item will be removed and placed in the trash.

We wish to thank our members who volunteered their time and efforts to support our various activities throughout the year.

Again, we thank those who allowed us to serve you this year.



Don Jarvis
President
Board of Governors



Quail Club News

Carole Duran, Club Reporter

The Quail Club program for November 14th will be held at the MCA at 10:00 am and will be presented by Maria Troche, BLM Representative. The subject is the closure of abandoned mines. The challenge for Quail members is to bring canned goods and staples for the VFW Thanksgiving baskets.

The December 12th Quail meeting held at the MCA at 10:00 am will be a potluck and Cookie Walk (bring 3 dozen cookies to participate). The challenge for the Quail members is to dress Christmassy and bring unwrapped toys for VFW distribution.

You don't have to be a member of the Meadview Quail Club to attend Quail meetings. Hope to see you there.



Tad's Auto & Marine Service & Repair

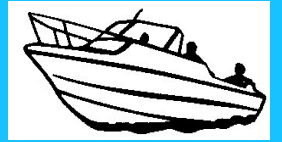
ASE Certified Mechanic

A/C Tune ups

Brakes

Suspension Computer Diagnostics

Tire Repair



Tad's Boat & RV Storage

Covered & Uncovered

24 ft. To 36 ft. Covered

ANY SIZE Uncovered

24-Hour Access

Gate Code Entry



27070 N Pierce Ferry Road

Meadview, AZ 86444

(928) 564-2855

**FISHERMAN'S
LANDING'S
Bar**

UPCOMING EVENTS FOR 2017

October 28th - Halloween Costume Party

November 17th - Thanksgiving Pot Luck Dinner

December 9th - Christmas Sweater Karaoke Party

December 31st - New Years Eve Band Party

290 E. Meadview Blvd, Meadview, AZ 86444

(928) 564-2100

**FISHERMAN'S
LANDING'S
Bar**



Meadview Lake Motel

30205 Escalante Blvd

Meadview AZ

928-564-2343

Enjoy The View

MOHAVE RANCHO LUMBER



GENERAL CONTRACTOR
Specializing in: Water & Septic Systems
Manufactured Home Site Preparation

FRANK GERACI

ROC: 101886 * 149886 * 217244 * 252832

14500 N. Pierce Ferry Road
Dolan Springs, AZ 86441

(928) 767-3339
Fax: (928) 767-6245

LOT FOR SALE

MCA OWNED

All utilities available.

Corner lot.

1060 E Bradley Bay Drive

Listed at \$10,000

Please direct all inquiries to
Kingman Premier Properties of

Meadview

928-564-2222



SANTA CLAUS IS COMING TO TOWN!

Santa will be riding to the houses of the children that live on paved roads. For those that live on dirt roads you will need to meet Santa at the MCA between 7 and 7:30 pm. The MCA will provide drinks and snacks while we await the arrival of Santa!!!

Santa's Helper is collecting Wish Lists. They can be found at the Meadview Hardware, Meadview Post Office, and the Meadview Civic Association (MCA). Please have them filled out and returned to the Red Mail Box at the Meadview Post Office by November 30, 2017. This ensures that Santa gets your Wish List and is able to make the presents in time to deliver them to you, personally, on Christmas Eve. (Note: If your child is not going to be here to attend please do not fill out a Wish List.)



For Sale by Owner

Undeveloped lot located in the foothills area of Meadview, AZ.

Lot # 19-0063 Tract # 1198

1410 E. Pueblo Dr.

Lot Size Dimensions 130'/260'

This lot has a gentle downhill slope with a beautiful view of the Grand Wash Bluffs of the Grand Canyon. Utilities are available at the street.

\$15,000 gets you a home site with an awesome view. If interested, please call 360-877-6381 and leave a message.

FRIENDS OF THE ARIZONA JOSHUA TREE FOREST

By Pam Steffen



The Friends of Arizona Joshua Tree Forest is dedicated to permanently protecting the Arizona Joshua Tree Forest for present and future generations. We will accomplish our mission with our diligent hands on approach using education, advocacy and stewardship.

This is the mission of our non-profit organization. We keep this in mind in all our outreach events and projects. It drives every decision we make. We have made great progress toward this goal in the six years since we formed with the very valuable help of our member volunteers. We could not accomplish any of our goals without them. If you are a member, thank you for your support, skills and time. We value you greatly. If you are not a member, consider joining our group. You will be contributing to the very important effort of keeping our Joshua Tree forest unchanged and preserved. We value the open spaces, dark skies and unbroken sea of Joshua Trees in our backyard and every effort to maintain those qualities is extremely important to the health of our community members and businesses.

Also, how about gifting your loved ones or friends with a membership in our organization? You would be giving them the opportunity to support our efforts and a be a part of preserving and protecting our unique and magnificent Joshua Tree Forest. We need to keep its grandeur intact for our children and grandchildren to appreciate.

Payments can be made in person at any COM meeting, placed in our mailbox (PO Box 613, Meadview, AZ 86444) or by credit card on our website (www.joshuatreeforest.org)

Join the fun and support our special public land!

Come join us! Annual membership fees- Single/Couple \$25, Family \$45, Business \$30. For more information check out our website at: www.joshuatreeforest.org

MCA Payment and Billing Options

Payment Options:

Bill Pay through your bank. Automatic payment sent by the member from their bank account and a check will be made out and mailed to the MCA from your bank.

Credit Card Payments by calling or coming into the office.

Check, Money Order or Cashier's Check either mailed or handed to the office staff. Most property owners are already utilizing this option. The change is that the checks are now electronically deposited within a week of receiving them.

Cash payments are always welcome. Bring cash payments to the office. Please do not mail cash payments.

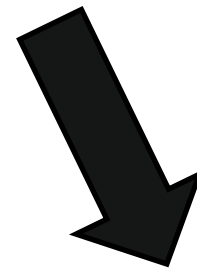
NEW! PayPal payments are now accepted at our website: mca-az.com Click on *Make A Payment* at the home page.

Billing Options:

E-Billing— Need to provide the office with your e-mail address.

1. You can fill out the Update form on the last page of this Monitor issue and mail it to us.
2. You can send us an e-mail. In the subject line write **E-Billing Request**. In the body provide all of your information including your preferred E-Billing address. **Please provide either your lot # or the Assessor's Parcel #.**
3. When the next billing cycle starts you will receive an E-Bill for every lot owned instead of a paper bill via snail mail.

Snail Mail no need to do anything to request this option as it is our default option.



LOOK

NOW AVAILABLE!

***MEADVIEW MONITOR
DELIVERED DIRECTLY TO
YOUR EMAIL INBOX .***

***IF YOU WANT THE
MONITOR DELIVERED VIA
EMAIL, PLEASE SEND YOUR
REQUEST TO:***

mca@citlink.net

***WE 'LL BE HAPPY TO ADD
YOUR NAME TO OUR
MONITOR E-MAILING LIST!***

HISTORY ON THE BLVD—FUN FACTS

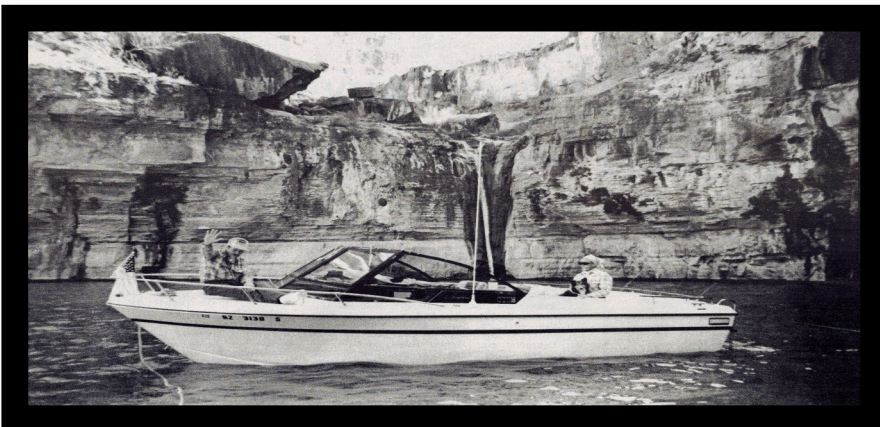


DOES THIS PLACE LOOK FAMILIAR?

A group of shoppers pose for the camera as a park ranger installs newly purchased parts in his vehicle

Back in the 70's, Rod Homburger owned and operated a local hardware store business that Paul Johnson, not yet a Meadview local, frequented as a weekly customer for three years. Paul loved the area so much that he decided to make Meadview a permanent place to call home, and moved here in August 1979. Paul purchased the store December 1, 1979 and opened up his business known as *Lake-Land Sales & Service* on Meadview Blvd. which is now owned and operated by the VFW. The building sat vacant for five years waiting for its new owner to arrive before Paul purchased it.

Going back further into history, the building was owned and operated by Mervin and Darlyn Dwiggin, who opened their business for the first time on Sunday, August 10, 1974 - known as *The Crazy Crappie Restaurant*. The restaurant offered a full menu for breakfast, lunch and dinner and featured both a coffee bar and a beer bar at opposite ends of the main dining area. The Dwiggin, their son Mervin Dwiggin and a friend of his, David Davis did most of the construction work themselves taking approximately three months to complete the job.



Paul and his Bookkeeper, Joanne sitting in the cove with Columbine (Emory) Falls in the background.

Photo taken by Sharon Seeba, *Meadview Monitor*, May-June 1984
Volume 21, Number 3

MANNA FOOD DISTRIBUTION
IS ON THE FIRST THURSDAY OF
THE MONTH BETWEEN 8-11
A.M. AT
330 E. MEADVIEW BLVD.
(Meadview Plaza next to View
Video)

EXPLORERS AND OVER THE HILL HIKERS

By Suzann Newell

September was perfect during the rest of weather for a few hikes October and November and trips for the should provide group. Seven cars interesting drove up Diamond Bar exercise. We hope most of our group will attend the Rampart opening of Overlook. We also the Nature Trail drove to New Water through the Arizona Springs. The Unicorn Joshua Tree Monument Plant (when the fruit at the beginning of dries they are called Diamond Bar Road. We Devil's Claw) was cleaned our section of flourishing and some Pierce Ferry picked the young fruit to Road. Then the group make pickles. Which drove up to Hualapai they tell me were pretty Mountain Park to hike good eating. The next the trails. There are trip was down to the several different trails, Rafter's Ramp, beyond all from 6200' up to the Pearce Ferry 8250'. The length of Campground. Most of the trails vary from 4.4 the 20 hiked the trail to miles up to 5.5 miles the Pearce Ferry round trip. Fantastic Rapids. The river is up a views and bracing a little and the rapids air. The next trip will were roaring. Back at be November 3 to drive the parking lot we down Grapevine Wash enjoyed a pot luck lunch to the Grapevine Springs with hotdogs, chili, and hike up as far as we can go. On November salads, baked beans and desserts. Then we sat 8 we will drive down to along the river and hike Mt. Mitten north of enjoyed the scenery and Dolan Springs, or do the company. A few jeep trip to Temple Bar days later we boarded via the backroad off the Wally Tratz's pontoon Gregg's Hideout Road. boat and crossed the Our regular meetings lake to Scanlon Bay then are held the 2nd hiked to the Joker Mine Wednesday of each and some went on to the month at the MCA Jumbo Mine. A couple beginning at 6:30. MCA got back to the boat and members are urged to jumped in to swim. They said the help plan the next hikes water was 'fine'. and trips.

Planned trips and hikes

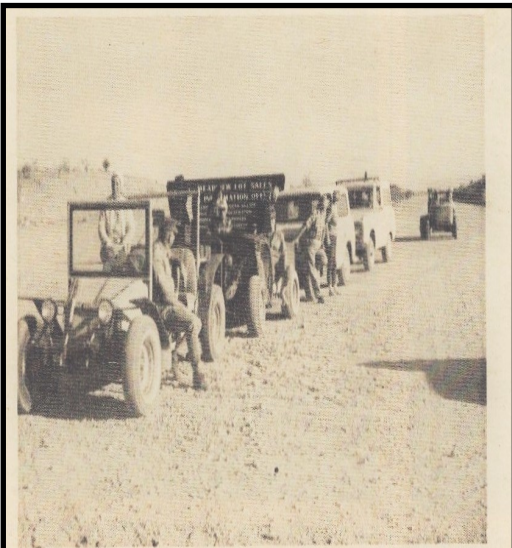
By HAL BROWN

Saturday, October 28, 1967, was a day of much excitement at Meadview. Several fun loving outdoor folks were up bright and early readying up their back country vehicles for the forth coming trek down the Grapevine Wash. Eyes were cast in the Southern direction of Pierce Ferry road as word had been received that others were on their way to join the fun.

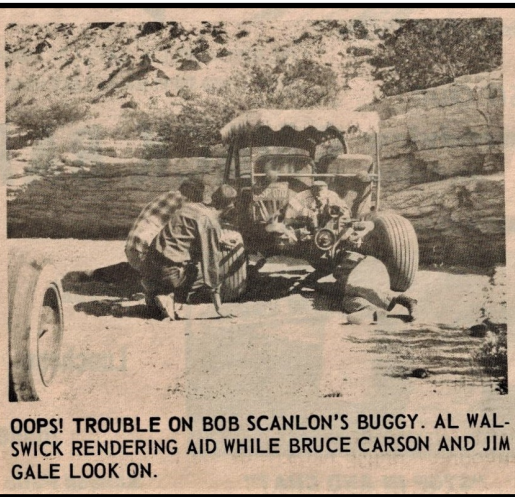
Though our departure time was set at 9:00 o'clock we didn't get underway until 10:00, hoping the others would arrive. Word was left for any late comers to follow right along and catch up with the caravan. Two small 4 wheelers and three sand buggies took off heading for the Lucky 7 Well and the wash that would connect up to the Grapevine. Lucky 7 Well ends the road from there on it's a wash all the way until you meet up with the Mormon Trail. The first entry to the wash makes the outing seem very tame as this dry river bed is very wide and sandy. This is due to a lesser slope of the surrounding terrain and the water drains off with less head. As the wash becomes closer to the steep uprising of the Grand Wash Cliffs the surface water drains off with much force from this steep slope and carries rocks of all sizes in its path. Anyone venturing the full length of the Grapevine can verify this.

As you proceed, the sand runs become shorter and shorter and the rocky stretches become longer. Bob Scanlon can vouch for those big rocks, his buggy tried to jump one hidden behind a broom bush and the result was a broken gas line. It always helps to have a good mechanic along on one of these trips and such was the case on this one, in the person of Ellard Walswick, so the delay was short.

Our group stopped and investigated the Grapevine Springs, a true wonder of nature. Here water flows out of a rocky canyon in the form of a fall and after a short run, just disappears in the sand. Enterprising stockmen have installed a Fairbanks Morse, single cylinder, diesel engine pump at the base of this rock bluff and pump the water hundreds of feet up to the top of the mesa, so the grazing cattle can have water to drink.



LINING UP FOR THE GRAPEVINE TREK, TAKEN OCT. 28th



OOPS! TROUBLE ON BOB SCANLON'S BUGGY. AL WALSWICK RENDERING AID WHILE BRUCE CARSON AND JIM GALE LOOK ON.

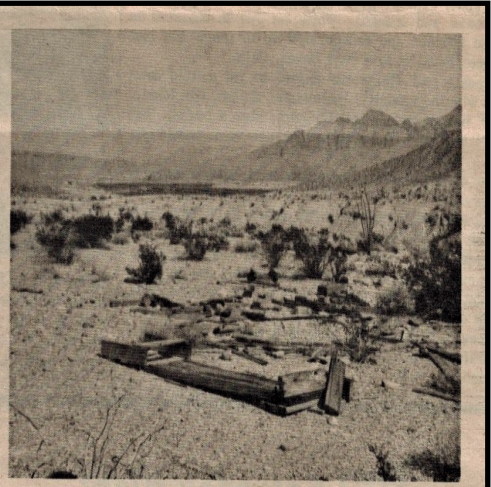
The huge mesquite trees that grow in the mouth of this narrow canyon are a sight to see. Their fight to grow has given them a very knarled, (sic) grotesque shape, that is most interesting.

The next stop was at a bluff where someone in the past had driven a 1" steel pipe into the rock from which water

flowed. Here there was much evidence

of the wild life that habits this portion of the desert. Quail, rabbit, coyote, horse, burro and an occasional bovine track could be made out in the damp earth around this spring. Several large willow trees grew here and we chose their shade for a lunch spot.

The wash from this point on became more rough and rocky. It was just below the lunch stop that the Scanlon sand buggy became familiar with that large rock, with said rock winning the bout. It was here, too, the canyon the Grapevine follows, begins to widen out.



EVIDENCE OF FOLKS BEFORE US--LOOKING NORTH FROM THE HIGH MESA. SILT FLATS AND THE COLORADO RIVER IN THE BACKGROUND.

While helping Bob get his gas tank fixed we could hear a motor approaching from the rear and soon appeared Cathy Taylor and Carolyn Kelly, riding tandem on their Yamaha. They were one of the parties we had been waiting for in front of the Marina that morning.

Carolyn chose to ride in the sand buggy with me as she had a very sore ankle due to a fall with her horse, the day before. Off we went to seek out the almost extinguished Mormon Trail, which is barely visible climbing up out of the wash.

This faint trace of a trail leaves the Grapevine via a very steep, rough slope, then levels off onto a nearly flat mesa. This made the going much easier and a very welcome respite.

There is evidence of a camp area on the bank of the wash where the trail branches off and after visiting this camp we continued on for approximately 3 miles to a very large camp area. Can only surmise that this was the first stop after the wagons had crossed the river at Pierce Ferry. Our next stop was what seemed to be at one time, a place of permanent habitation. There was indication of a building of some nature, sheet metal roof jack, the old style split shakes scattered all about and several cleared off areas. A good place to use your imagination.

From this point we could look down on a part of the silt flats that are prevalent around Pierce Ferry. Winding her way through these flats was the Colorado River, a beautiful sight.

As time was running short we had to move on. There was still lots of rough wash and those silt flats to cross before we reached the Park Service road at what we modern folks call Pierce Ferry. All in all it was a very exciting and fun outing and everyone was ready for that T Bone steak atop of our mesa at Meadview. Thus ended another MAC adventure.

VFW Post 11014 Auxiliary News November/December 2017

VFW 11014 Meadview News November/December 2017
Seasons Greetings!

First and foremost, a note of exceptional gratitude to the MCA for the use of the facility for the Law Enforcement Appreciation Dinner. Well done! Thank you for adding to the success of the event and the attention shown by Larry Minard to meet the on-the-spot requests. Thank you.

As we roll into the winter months, the calendar does not slow for events. Along with the hustle of the holidays we have special recognition days for our military service persons. On Veterans Day, November 11, the VFW will host a flag raising and flag retirement beginning at 11:00 AM. There will also be free hot dogs for the kids, all the kids, to encourage family participation in a historical and patriotic event. Come, remember a loved one who has given selflessly, to preserve our freedom, in the flag retirement.

During the day, the photos of our 109 Veterans, who participated in the Veteran Photo Shoot, will be scrolling on a tv in the VFW hall. Copies of the "Mohave Valley Daily News", the publication the Veterans will be featured, will be available at the VFW Post on Monday, November 13. Also taking place on Veterans Day will be the Fall VFW Yard Sale with proceeds to benefit the Christmas gift program for the Veterans, and their families, residing at the Boulder City, NV, VA Home.

On Sunday, November 12, of Veterans Day weekend, bring your Veteran in for a complimentary Spaghetti Dinner. It will be a weekend of activity to celebrate Veterans and their families.

The annual Thanksgiving Target Shoot will be taking place on Saturday, November 18. There will be 5 categories of weaponry to register and ALL are welcome to compete; youth, ladies and gentlemen.

On December 7, Pearl Harbor Day, the VFW Post will host a flag raising at 11:00 AM, raising the flag once flown on the USS Arizona prior to December 7, 1941, followed by a light luncheon.

Looking toward the New Year, VFW Post 11014 will host a USO styled New Year's Eve celebration with costume, music, food served on tin trays, and good company themed in a time when life seemed simpler, idealistic, and the sound of orchestra music filled the evening air.

Calendars are available at the VFW the beginning of each month for upcoming activities, game nights, food events, and meetings. Please stop by to request one.

You are welcome to join us on Taco Tuesday, Burger Wednesday, Fish Friday, Spaghetti Dinner on the 2nd Sunday, all from 5:00 – 7:00 PM, and Karaoke on the 3rd Saturday from 5:00 to 10:00 PM. Proceeds from food nights go to Veterans' Programs.

Serving our Veterans, Families and Community,
Jeanne Hampton, President, VFW 11014 Auxiliary

IMPORTANT NOTICE

NEW RESIDENTS

Please help our emergency responders identify your property by posting your address in clear view. GPS is not always accurate in our area.

Their quick response is for your own benefit.

*He who thanks but with the lips
Thanks but in part;
The full, the true Thanksgiving
Comes from the heart.
--J. A. Shedd*

VFW GOOD EATS!

- **SECOND SUNDAY OF THE MONTH - SPAGHETTI FEED 5-7 P.M.**
- **TACO TUESDAYS 5-7 P.M.**
- **HAMBURGER WEDNESDAYS 5-7 P.M.**
- **FISH FRIDAYS 5-7 P.M.**
-

SERVED TO THE PUBLIC

COME JOIN US!

MEADVIEW COMMUNITY CHURCH

“A light at the Canyon’s End”

(928) 564-2411

Service Schedule:

Sunday

9:30 AM Adult Class
10:45 AM Morning Praise and Worship

Wednesday

6:30 PM Bible Study

Friday

6:00 PM Cantata practice
7:00 PM Choir practice

Communion is served the first Sunday of the month
Our Men’s Breakfast is the second Tuesday of each month at 8:00 AM
Women’s Bible Study is on the first and third Monday each month at 9:30 AM
Red, White and Blue quilters meet at 9:00 AM the third and fourth Thursday of each month
The Christmas Ladies Luncheon is Saturday, December 2nd at 11:30 AM
Hark! The Angels Sing is Sunday, December 10th at 6:30 PM

Tune in to radio station KVIP at 90.9 FM for inspirational music and messages

Follow us on Facebook at **Meadview Community Church**

Pastor John Mulvihill

(301) 730-0727

Come and worship with us!

MEADVIEW BAPTIST CHURCH

Sunday: 9:45 a.m. - Sunday School
11:00 a.m. - Worship Service

(Nursery is available during church services).

Tuesday: 2:00 p.m. - Cottage Prayer at Ann Woods Home, 200 Coral Isle Dr.

Thursday: 3:00 p.m. - Meal & Bible Study/Prayer Meeting in the Worship Center.

Saturday: 9:00 a.m. - Men’s Breakfast First Saturday of each month.

928-564-2341

www.meadviewbaptist.com

We would love to receive your photos of Meadview and the surrounding area. Those pics just might find a place in future *Meadview Monitor* publications and/or our website for other members to enjoy viewing.

Please submit photographs to our e-mail address: mca@citlink.net.

A FEW WORDS FROM THE MCA OFFICE STAFF -

We want to thank all our members for helping us keep a smile on our faces throughout the past year as we’ve worked together to keep the office running smoothly while making sure we assist you with all your questions and concerns satisfactorily. We enjoy chatting with each and every one of you and truly invite you to stop by the office anytime you’re in the area and say “Hi!”

Property statements will be mailed out mid December for the 2018 dues. We have made a way to reduce paper and printer ink usage by including all member lots on a single statement instead of a one page invoice for each lot. Some statements will have more than one page for those who own multiple lots.

We wish all a wonderful Thanksgiving and a bright Christmas enjoyed with family and friends!

Sandy and Edie

November 2017

Sun	Mon	Tue	Wed	Thu	Fri	Sat
			1 Sit & Be Fit 9-10:30 am	2 COM 10-12 am	3 Sit & Be Fit 9-10:30 am Bingo 1-4:30 pm	4 Ridgeriders 9-10:30 am
5	6 Sit & Be Fit 9-10:30 am	7 ELECTION DAY Busy Hands Social Club 8-4 Bingo 6-9 pm	8 Sit & Be Fit 9-10:30 am Explorers 6:30-8:30 pm	9 Red Hatters 1-3:30 pm	10 Sit & Be Fit 9-10:30 am Bingo 1-4:30 pm	11 <u>MCA MEMBERSHIP MEETING 9:00 AM</u>
12	13 Sit & Be Fit 9-10:30 am LMRFD 1:30-4 pm	14 Quail 10-12 Bingo 6-9 pm	15 Sit & Be Fit 9-10:30 am	16	17 Sit & Be Fit 9-10:30 am Bingo 1-4:30 pm	18
19	20 Sit & Be Fit 9-10:30 am	21 Bingo 6-9 pm	22 Sit & Be Fit 9-10:30 am	23 HAPPY THANKSGIVING!	24 Sit & Be Fit 9-10:30 am Bingo 1-4:30 pm	25
26	27 Sit & Be Fit 9-10:30 am	28 Bingo 6-9 pm	29 Sit & Be Fit 9-10:30 am	30		

December 2017

Sun	Mon	Tue	Wed	Thu	Fri	Sat
					1 Sit & Be Fit 9-10:30 am Bingo 1-4:30 pm	2 Ridgeriders 9-10:30 am
3	4 Sit & Be Fit 9-10:30 am	5 Bingo 6-9 pm	6 Sit & Be Fit 9-10:30 am	7 COM 10-12 am	8 Sit & Be Fit 9-10:30 am Bingo 1-4:30 pm	9 <u>MCA MEMBERSHIP MEETING 9:00 AM</u>
10	11 Sit & Be Fit 9-10:30 am	12 Quail 10-12 Bingo 6-9 pm	13 Sit & Be Fit 9-10:30 am Explorers 6:30-8:30 pm	14 Red Hatters 1-3:30 pm	15 Sit & Be Fit 9-10:30 am Bingo 1-4:30 pm	16
17	18 Sit & Be Fit 9-10:30 am LMRFD 1:30-4 pm	19 Bingo 6-9 pm	20 Sit & Be Fit 9-10:30 am	21	22 Sit & Be Fit 9-10:30 am Bingo 1-4:30 pm	23
24 <u>SANTA RUN</u> 6-9 pm	25 MERRY CHRISTMAS!	26 Bingo 6-9 pm	27 Sit & Be Fit 9-10:30 am	28	29 Sit & Be Fit 9-10:30 am Bingo 1-4:30 pm	30

Please do not send your debit/credit card information or cash through snail mail. Also, please do not provide us with your debit/credit card information through an e-mail. These are not secure places for such important and sensitive information.

Property Owner Name: _____
Care of (if you are caring for the owner's property): _____
Address: _____
City: _____ State: _____ Zip Code: _____
Phone #: _____ Alt. Phone #: _____
E-mail Address: _____

Information Update/Change form I want to receive E-Billing.

Meadview Monitor
Meadview Civic Association, Inc.
247 E. Meadview Blvd.
P.O. Box 217
Meadview, AZ 86444

Phone: 928-564-2313
Fax: 928-564-2520
E-mail: mca@citlink.net
Website: mca-az.com

