

Meadview Civic Association Inc.



Meadview Monitor

JUNE 1965 VOL 3, NO2

DISCLAIMER:

The Meadview Monitor is an official publication of the Meadview Civic Association (MCA, a membership association) P.O. Box 217, Meadview, AZ 86444. (928) 564-2313, Fax (928) 564-2520, or email: mca@citlink.net (please put "Meadview Monitor" in the subject line.) Notice in the Meadview Monitor is official notice of any and all proceedings of the MCA.

Submissions become the property of The Meadview Monitor. We will not publish any letters or ads that are unsuitable for this newsletter or for which the MCA be held liable. The Board of Governors will make the final decisions on those letters, ads and/or articles that are printed. All articles must have a by-line. All letters must have a name and a traceable address.



meadview monitor



Return Requested

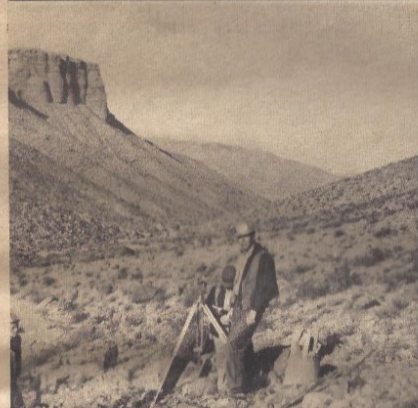
BULK RATE
U. S. POSTAGE
PAID
PERMIT NO. 2
Bullhead City, Arizona

VOL. 3, NO. 2

MEADVIEW, ARIZONA

JUNE, 1965

SANDY POINT ROAD ASSURED



U. S. B. P. R. ENGINEERS STAKING NEW ACCESS ROAD RIGHT-OF-WAY.



THIS SHELTERED BAY WILL BE THE TERMINATION POINT OF THE NEW ACCESS ROAD TO LAKE MEAD.

Engineering Completed, Contract Let For Bids

During April and May, engineers of the Bureau of Public Roads were hard at work staking the finished Right-of-Way and alignment of the new Lake Mead access road into Sandy Point. Various photos in this issue of the Meadview Monitor depict their activities.

The project got underway when location engineer John Haapala from Eureka, California moved into the area with Larkin Goodrich, Carl Lamon, Rafael Rodriguez, Bill Bethany, Danny Looky, Ken Kraft and Lester Carson.

It was an interesting experience for Mr. Haapala, who had been to this area in 1941 when working on the surveys for the Pierce Ferry Road.

Planning for this new road was started last Fall when Park Service officials met at the proposed road site and agreed on the new facility location. Since that time work has progressed rapidly through aerial surveys and preliminary engineering.

Bids have been called for construction and will be opened in Phoenix, Arizona on June 17, 1965. Work is expected to start in late July, with 320 calendar days being allotted for completion of construction.

RIVCOR President, Frank E. Glindmeier had the following statement to make upon receipt of the news:

"The construction of this road is a much needed and long awaited conclusion of the efforts of many people. The co-operation of the National Park Service and Mohave County officials has now resulted in a new facility which will have tremendous economic impact in the Meadview Development and in fact, Mohave County as a whole.

Permanent access to the upper Basin area of Lake Mead has been badly needed for several years now. The growth pattern of the entire Lake Mead National Recreation Area has been phenomenal, and these additional facilities will help to alleviate some of the congestion of other landings.

The new road and the attendant traffic and visitors that will come as a result, will open completely new economic conceptions for the entire Meadview Project. We are now formulating future development plans which include new subdivision areas and the development of utilities.

I would like to express my appreciation to all of our wonderful Meadview property owners who have assisted us in making this new facility possible. Their constant support and confidence have made it all feasible."

Specific information regarding the new road is on Page 3, and is a reprint of the official advertisement for bids which appeared in the Arizona Construction news.

Lake Mead, Boating & Fishing Paradise



Lake Mead Visitors Set Record For Year

Superintendent Charles A. Richey reported today that a record 3,462,000 persons visited Lake Mead National Recreation Area during 1964, up 3.4 percent over 1963.

June was the favorite month for visits to this ever popular recreation area

with a total of 393,200 persons using the various facilities. Of this number 125,480 went swimming, and 56,200 water skied.

Camping proved most popular during April when 52,200 persons pitched their tents or parked their trailers at developed campgrounds or on remote sandy beaches. The greatest number

of fishermen, 117,700, descended on the area in May to try their luck in either Lake Mead or Lake Mohave.

Lake Mohave stations showed the greatest increase in visitation. A 109 percent increase occurred at Cottonwood Cove during August over the previous year.

With the addition of new facilities at Boulder Beach, Las Vegas Wash, Cottonwood Cove, Echo Bay, and Temple Bar, and improved harbor and launching conditions along with an anticipated rise in the Lake Mead water level during late spring Lake Mead officials are predicting another banner year for 1965.

LBJ's Present Budget Boosts Arizona Parks

WASHINGTON (UPI)—President Johnson's budget for the 1966 fiscal year called for expenditures of more than \$4.9 million on national parks and monuments in Arizona.

Spending proposed by the National Park Service during the year beginning July 1 included \$1,547,000 for construction in Grand Canyon National Park.

The recommended building program for Grand Canyon included \$770,000 for a hospital at the South Rim Village.

The budget called for

appropriation of \$950,000 for the Bureau of Public Roads for construction of a 4.5 mile access road, a parking area and a launching ramp at Sandy Point in the Lake Mead National Recreation area. An additional \$385,300 was requested for construction of buildings and utilities in the area.

Other road construction requested in the budget included \$493,000 for a 1.2

(Continued on Page 4)

BOARD OF GOVERNORS & STAFF

Sharon Baur: President

Jack McGinnis: V-President

Rita Caldwell: Treasurer

Clyde Haggerty: Secretary

Larry Reilley: Director

Ron Balsamo: Director

Staff Members:

Lydia Marrero: Member
Services Representative,
Notary

Julie Harris: Member
Services Representative,
Notary & Contributing Editor

Fred Ellis: Maintenance

Michael O'Keeffe:
Maintenance

Bob Reynold: Security

Richard (Woody) Wood:
Security

Ronald Wood: Security



meadview monitor

PUBLISHED FOR AND BY
THE RESIDENTS AND OWNERS OF

MEADVIEW

DEVELOPED BY

RIVCOR

BOX 237

BULLHEAD CITY ARIZONA

754-8871

Bids On Recreation Area For Lake Mead Sought

BOULDER CITY, Nev. (AP)—The National Park Service called for bids on construction of boating, motel and store concessions in the Nevada portion of the Lake Mead National Recreation Area.

Each bidder must be willing to finance basic construction for about \$375,000, the park service said, and supply required services for the first three years.

Park Asks Service Anchorage Change For Mead Area

The National Park Service has asked the U.S. Army Engineer District to establish six special anchorage areas in Arizona and seven in Nevada in the Lake Mead National Recreation Area, the district announced this week.

The Arizona areas would be at Willow Beach, Katherine Landing, Gregg's Hideout, Pierce Ferry, Kingman Wash, and Temple Bar.

Nevada locations would be at Overton Beach, Echo Bay, Callville Bay, Las Vegas Wash, Hemenway Harbor, El Dorado Canyon, Cottonwood Cove.

The anchorage areas would apply to craft not more than 65 feet in length which would not be required to carry anchor lights while at anchor. Temporary floats or bouys for marking anchors or moorings would be allowed but fixed moorings, piles or stakes would be prohibited.

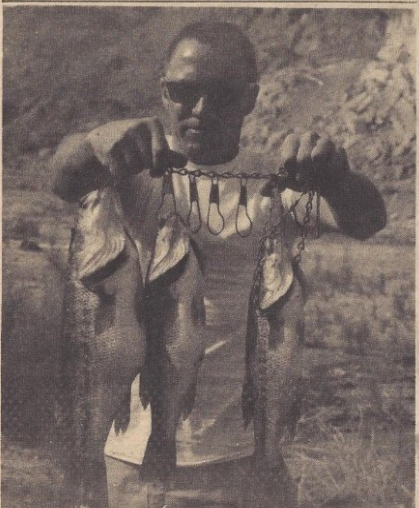
These would include a 50-slip boat dock, rental boats, a 24-unit motel, trailer village, boating and fishing supplies, general store with dining room, shower-laundry facilities and boat storage area.

Offers will be evaluated starting July 30, but construction is not expected to start until January 1967.

When power, water and sewer facilities at the Callville Bay site will be completed.



GERY WAKEFIELD, RESIDENT MANAGER, SHOWS HIS RECENT CATCH OF BASS AND CRAPPIE FROM LAKE MEAD.



A FREQUENT LAKE MEAD VISITOR, JOHN YOUNT, CAUGHT THESE BEAUTIES IN A FEW HOURS ON A RECENT FISHING TRIP WITH RIVCOR PRESIDENT, FRANK GLINDMEIER.

The Miracle of Lake Mead

ARIZONA'S MAGIC WATER HIGHWAY

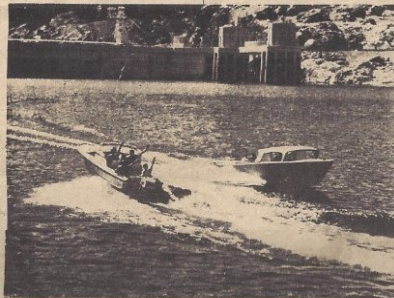
This is another of a series of re-prints from past issues of "Arizona Highways" magazine recently made available to Rivcor President Frank Glindmeier. The magazines date back into the '30s and provide an exciting historical insight into the Lake Mead area of over the past thirty years. The following story is reprinted from the June 1945 edition of "Arizona Highways".

The world's largest artificial body of water, backed by the highest barrier on earth and controlling the once tortuous Colorado River, makes of the Boulder Dam National Recreation Area one of the most popular playgrounds in the United States. It is described by seasoned travelers as one of the most exciting adventures in any travel itinerary. Lake Mead, formed by the construction of Boulder Dam, extends 115 miles up the Colorado, through Boulder Canyon, Virgin end of the Grand Canyon. With the creation of this lake, water backs into remote box canyons never before accessible to man. Miles of cliffs, buttes and sandstone temples, flaming with color, are reflected in the placid waters, creating a scene of unmatched beauty.

Lake Mead has a shore line of 550 miles and holds more than 30 million acre-feet of water. The reservoir's depth at the dam is more than 550 feet. From the crest of the dam can be seen great schools of big-mouth black bass, many of exceptional size. Fishing is good on Lake Mead, either from boats or along the banks of the lake and its many coves.

This mighty lake is one of the finest for motor boating, sailing and canoeing. It is under the supervision of the National Park Service. Fortunately for the people of America, this spectacular area is administered as a public enterprise for the pleasure and the enjoyment of all.

On a boat trip many awe-inspiring sights come into view. The sheer white cliffs of Temple Bar and the stately form of Napoleon's Tomb rise in bold relief from the vari-colored cliffs and reflect in detail in the mirrored waters far below them. The mile-high walls of Grand Wash Cliffs give way to a peninsula overlooking Pierce Ferry, a recreational center which undoubtedly will include hotels and other resort facilities as



BOATING, LAKE MEAD

the area is further developed. Nearby, is the magnificent Joshua Tree Forest, through which a forty-five mile stretch of road winds its way from Pierce Ferry to the Kingman-Boulder Dam paved highway.

Back in the Grand Canyon country gleams Emory Falls, a 150-foot ribbon of water that drops gracefully from the red cliffs into a veritable garden of mosses, ferns and wild grape vines.

Bathing facilities are available at Hemenway Beach, a short distance above Boulder City. Here also is a boat landing where many types of water craft are anchored.

More massive than the Pyramid of Cheops, Boulder Dam was built by 4,000 men in four years, whereas the Pyramid consumed in its construction the labors of 100,000 men for a generation. The magnificence of Boulder Dam is not dependent upon its tremendous size. Its accomplishments are even more impressive, despite the perfection of its design and its simple beauty. They are not so readily seen and understood, however. While it has set a new high in engineering achievement, Boulder Dam will be noted in the future for the good it does, rather than for its magnitude or appearance.

This great barrier in Black Canyon, braced as it is against the cliffs of Arizona on one side and the precipitous wall of Nevada on the other, brings under control America's most turbulent river. It provides an unfailing water supply for hundreds of irrigated farms in the deserts and supplements the domestic supply of thousands of city homes in the Southwest, by storing the torrential flow of the Colorado for release steadily throughout the year. It has created mighty Lake Mead, thus making a new national playground. It controls the silt of the river, and it makes possible the generation of hydro-electric power sufficient to repay the entire cost of the project, 108 million dollars in 50 years, with interest at 4 per cent.

The character of the Colorado River has been changed entirely. A menace has been transformed into a new source of wealth. The dam, through its benefits, will add thousands to the population of its environs, even as



A MORNING'S BASS CATCH, LAKE MEAD

other great dams in Arizona, already constructed, and still others now being planned.

Some of the figures in connection with the construction of Boulder Dam stagger the imagination. Five million barrels of cement were used, mixed with sand and gravel to make four and one half million cubic yards of concrete. Almost 600 miles of pipe are imbedded in the concrete, through which ice water was circulated, to cool the mass as it was poured. An ice plant capable of producing two million pounds of ice a day was placed in operation. Eighty-eight million pounds of plate steel was used to make pipe, some of which measured 30 feet in diameter. Twenty-two million pounds of assorted gates and valves went into the construction of the dam proper, as well as nearly 20 million pounds of structural steel, nuts and bolts. These items make up but a small portion of the supplies which were required.

Boulder Dam's great height of 727 feet, with a base 660 feet thick and tapering to 45 feet at its crest, which is 1,282 feet long, is actually dwarfed in its majestic setting of rugged and colorful mountains. The dam is of arch gravity type—a construction in which water load is carried by both gravity and arch action. The technical design of the dam was based on three fundamental requirements; first, that the dam should be of the massive arch-gravity type; second, that the base of the dam should be located wholly within the area bounded by the two adjacent fault lines in the canyon rock; and third, that the maximum compressive stress in the dam should not exceed 30 tons per square foot. Two of the most important and difficult problems in the design and construction of the dam were the generation of heat in a large mass of concrete due to hydration of cement, and the volumetric changes occurring in mass concrete due to temperature changes and other causes. That is why provisions were made to include circumferential contraction joints in the dam and to lower the temperature of the concrete to normal, or subnormal values, by means of artificial cooling system.

Aside from the great concrete wedge, the giant spillways and intake towers, and the intricate network of power facilities, the dam houses batteries of the world's largest generating units, with an ultimate installation of 15 main generating units of 115,000-horsepower capacity each, making a total generating capacity of nearly two million horsepower.

Boulder Dam and Lake Mead are overpowering in their immensity and many-fold purposes—truly one of the greatest engineering achievements in the history of man.



LARKIN GOODRICH, ENGINEER FOR THE U.S. BUREAU OF PUBLIC ROADS TAKES A LUNCH BREAK WHILE WORKING ON THE SURVEY OF THE NEW ACCESS ROAD TO SANDY POINT.

ANSWER TO
CROSS
WORD
PUZZLE
ON PAGE 4

Sandy Point Ramp Ideal

The new Sandy Point launching ramp will be one of the most ideal facilities in the entire L.M.N.R.A. Plans of the new road and ramp reveal that a perfect 9% grade has been maintained on the entire ramp, providing a uniform slope for launching and loading trailer boats.

Surfaced with hot plant-mix, the new ramp will be 100' wide, accomodating the high number of boats that are expected to use the new area.

The 3.971 miles of access road is to be paved the entire distance with roadmix asphalt. The road itself has an average grade of 6% to 7 1/2 % as it drops some 1500 feet in elevation from the point of origin on the Pierce Ferry road to Lake Mead.

The official designation of the road is Route 27-Sandy Point Access Road. 320 calendar days are anticipated for completion of construction, due to the extremely difficult terrain over the alignment. Construction is expected to start in late July or early August of this year.

Two Matronly ladies to travel agent: "We'd like to get completely away from civilization, near some nice shopping district."



MEADVIEW RESIDENTS, MARGE AND "MAC" McINTOSH PROUDLY DISPLAY THE NEW ADDITION TO THEIR NATIVE STONE HOME.



NEWLY COMPLETED RESTAURANT AND STORE FACILITIES AT TEMPLE BAR LANDING.

ADVERTISEMENT FOR BIDS Sandy Point Access Road

BUREAU OF PUBLIC ROADS, San Francisco, California, June 3, 1965. Sealed bids will be received at the office of the Bureau of Public Roads, at 230 North First Avenue, Phoenix, Arizona, until 11:00 A.M., on June 17, 1965, and then publicly opened for furnishing the materials and performing the work of project Lake Mead National Recreation Area 27(1), Sandy Point Access Road, grading and roadmix surfacing, Mohave County, Arizona. The project is located approximately 50 miles north east of U. S. 93 and 466 on Lake Mead N.R.A. Route 3. The project extends 3.971 miles northwesterly to South Bay which is approximately 6 miles west of Pierce Ferry. Contract time is 320 calendar days. Principal items of work are approximately as follows:

526,580 cu. yds.	Unclassified excavation
1,640 cu. yds.	Excavation for structures
5,310 cu. yds.	Placing backfill material, pipe culverts
3,676 miles	Road-mix surfacing laid, Case 1
1,910 tons	Plant mixture
6,036 lin. ft.	Bituminous coated corrugated metal pipe
Lump Sum	Furnish water, water plant, and equipment

This project is 100 percent small business set-aside. Plans and specifications may be examined at the Bureau of Public Roads offices, 230 North First Avenue, Phoenix, or at Room 9473, 450 Golden Gate Avenue, San Francisco; and at Associated General Contractors' offices at Security National Bank Building, Reno, 430 South Main Street, Salt Lake City, 222 North Central Avenue, Phoenix, or 2551 Beverly Blvd., Los Angeles, California.

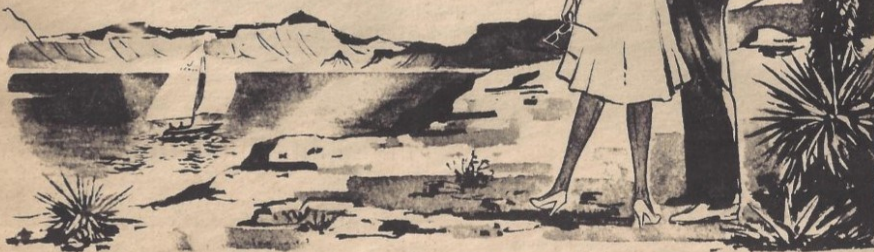
Upon request plans and specifications, forms, and information for bidders will be furnished, without charge to prospective bidders, from the Bureau of Public Roads, 230 North First Avenue, Phoenix, Telephone 602-261-3745, or from Room 9473, 450 Golden Gate Avenue Box 36096, San Francisco, California 94102. Telephone 415 556-1182.

T. M. ROACH, Federal Highway Projects Engineer

YOUR VERY OWN, PERSONAL HIDE-A-WAY

A FULL ONE ACRE LAKE ESTATE
FOR ONLY

\$15. DOWN
\$15. MONTHLY



Picture you and your family in a hide-a-way home in one of the most scenic mountain and lake settings in the Southwest.

Homes with elevations up to 4,000 feet surrounded by one of the nation's largest Joshua forests. Healthy, invigorating fresh air and sunshine with Lake Mead at your doorstep.

Meadview, the only privately owned and developed land inside the Lake Mead National Recreational Area, offers you a new world of resort living. Fish, hunt, water ski, ride or just plain relax away from it all. Full one acre lake estates from \$995.00.

**For Full
INFORMATION
Send This
Coupon TODAY!**

RIVCOR
Box 237
Bullhead City, Arizona

Name _____
Address _____
City _____ State _____
Phone _____ Zip Code _____

meadview



"On the Road to Pierce Ferry"

By William Bellinger, Jr.

CROSSWORD PUZZLE

ACROSS

1. Sloppy persons
5. Cubic meter
11. Lhasa is the capital
12. Norwegian author
13. Worship
14. Pith helmet
15. Short, sleeveless vest
17. Small island
18. Deeds
20. Skilful
23. Little cat
27. To be in debt
28. Part of "to be"
29. Docile
33. Part of a church
34. Storms
36. Baseball's Ruth
39. A braggart: sl.
43. Deputy
45. Defile
46. Midday meal
47. Expanse
48. Underworld river: Myth.
49. Townships: Gr. Hist.

DOWN

1. Pierce
2. Italian resort
3. Greek coin
4. Left desolate
5. Cubic meter
6. Perch
7. An oboe player
8. Vipers
9. Stagger
10. Dirk
16. Tree
19. Brazilian palm
20. Canine
21. Female sheep
22. Bog
24. Knock lightly
25. Bitter vetch
26. Born
30. Ditch
31. Music note
32. Incite
33. Convince
35. Believed
36. Sphere
37. Chills and fever
38. Flexed
40. Bang
41. Otherwise
42. Certain whiskeys
44. Definite article

FOR ANSWER SEE PAGE 2

PUZZLE NO. 816

L.B.J.'S PRESENT BUDGET
(Continued From Page 1)

mile approach road to the Tuzigoot National Monument.

Requests for construction of buildings and utilities in Arizona included:

Grand Canyon National Monument, \$5,200; Navajo NM, \$12,400; Organ Pipe Cactus NM, \$52,000; Saguaro NM, \$109,500; Southwest Archeological Center, \$29,400; Tumacacori NM, \$3,600, and Wupatki and Sunset Crater NM, \$267,100.

Other requests for money to build roads and trails included:

Grand Canyon National Park, \$26,300; Petrified Forest NP, \$49,000; Saguaro NM, \$25,000; Tonto NM, \$800; Tumacacori NM, \$6,500 and Wupatki and Sunset Crater NM, \$41,300.

The Old Timer



"In the old days a boy was straightened out by being bent over."

LAS VEGAS SHOW SCHEDULE

THE STRIP
DESERT INN

"HELLO AMERICA" starring DAVIS & REESE & a Cast of 80 - Indef.
Lounge: Happy Jesters; Toyko Happy Coats; Desert Inn Strings.

DUNES

"CASINO DE PARIS" starring LINE RE-NAUD - Indefinitely
Lounge: "Vive Les Girls" - Indefinitely

FLAMINGO

JULIET PROWSE, MYRON COHEN
Lounge: Fats Domino

HACIENDA

HANK HENRY SHOW; JACK STATHAM'S "LA PETITE REVUE" CHARLEY SHAFFER; DANNY OWENS - Indef.

RIVIERA

June 14 thru July 4
DINAH SHORE
Lounge: Shecky Greene

SAHARA

June 15 thru July 12
FRANK FONTAINE
Lounge: Thru June 14 Morey Amsterdam
June 15 thru July 19 Louis Prima

SANDS

June 15 thru July 27
RED SKELTON
Lounge: Janice Harper and Vido Musso

STARDUST

LE LIDO DE PARIS - "QUELLE NUIT"
Lounge: Esquivel; Nalani Kele Polynesian Review; Novelities

THUNDERBIRD

JACK BENNY, FRANKIE AVALON
Lounge: Belle Barth; Kings IV; Frank Moore; "Girls Ala Carte"

TROPICANA

"THE ALL-NEW 1965 POLIES BERGERE" - Indefinitely
Lounge: Kirby Stone Four.

FISHERMAN'S
CALENDAR

JUNE, 1965

1	G	Ev.
2	B	Ev.
3	P	Ev.
4	P	Ev.
5	F	Ev.
6	F	Mo.
7	F	Mo.
8	P	Mo.
9	P	Mo.
10	B	Mo.
11	B	Mo.
12	B	Mo.
13	F	Ev.
14	F	Ev.
15	G	Ev.
16	G	Ev.
17	G	Ev.
18	G	Ev.
19	G	Ev.
20	B	Ev.
21	B	Mo.
22	P	Mo.
23	P	Mo.
24	P	Mo.
25	F	Mo.
26	P	Mo.
27	P	Mo.
28	P	Ev.
29	G	Ev.
30	G	Ev.

JULY, 1965

1	P	Ev.
2	P	Ev.
3	F	Ev.
4	F	Ev.
5	P	Mo.
6	P	Mo.
7	G	Mo.
8	G	Mo.
9	P	Mo.
10	F	Mo.
11	F	Mo.
12	G	Mo.
13	G	Ev.
14	B	Ev.
15	B	Ev.
16	B	Ev.
17	B	Ev.
18	B	Ev.
19	P	Ev.
20	P	Ev.
21	P	Ev.
22	F	Mo.
23	F	Mo.
24	P	Mo.
25	P	Mo.
26	G	Mo.
27	G	Mo.
28	P	Ev.
29	P	Ev.
30	P	Ev.
31	F	Ev.

AUGUST, 1965

1	P	Ev.
2	P	Ev.
3	G	Mo.
4	G	Mo.
5	G	Mo.
6	P	Mo.
7	P	Mo.
8	F	Mo.
9	G	Mo.
10	G	Mo.
11	B	Mo.
12	B	Ev.
13	B	Ev.
14	B	Ev.
15	B	Ev.
16	P	Ev.
17	P	Ev.
18	F	Ev.
19	F	Mo.
20	P	Mo.
21	P	Mo.
22	P	Mo.
23	B	Mo.
24	G	Mo.
25	P	Mo.
26	P	Ev.
27	P	Ev.
28	P	Ev.
29	P	Ev.
30	P	Ev.
31	G	Ev.

Explanation: B Best; G Good; F Fair; P Poor. Mo. and Ev. give the best time of day, but are subject to change by local conditions.

Monitor For Friends

We have received many requests from property owners to mail the MEADVIEW MONITOR to their friends and relatives living elsewhere. We will be happy to put them on the mailing list. Just fill out the spaces below and mail to: RIVCOR, Box 237, Bullhead City, Arizona.

PLEASE SEND THE FOLLOWING PERSONS
COMPLIMENTARY COPIES
OF THE MEADVIEW MONITOR

NAME _____

ADDRESS _____

CITY _____

STATE _____ ZIP CODE _____

NAME _____

ADDRESS _____

CITY _____

STATE _____ ZIP CODE _____

REQUESTED BY _____

ADDRESS _____

CITY _____

STATE _____ ZIP CODE _____



V.F.W. Post 11014 GOOD EATS!

•SECOND SUNDAY OF THE MONTH

•SPAGHETTI 5-7 P.M.

•TACO TUESDAYS 5-7 P.M.

•FISH FRIDAYS 5-7 P.M.

Check the V.F.W. Calendar to see if there is a scheduled

Dinner for Wednesdays.

DINNER SERVED TO THE PUBLIC,

MEMBERS AND

NON-MEMBERS ARE WELCOME!

COME JOIN US!

Submit Your Photos!

We would love to receive your photos of Meadview and the surrounding area. Those pics just might find a place in future Meadview Monitor publications and/or our website for other members to enjoy viewing. Please submit photographs to our e-mail address: mca@citlink.net.

V.F.W. Post #11014



VFW FOOD BANK DISTRIBUTION

Meadview Area Nutritional Assistance

Food distribution is on the Second Tuesday of each month

Starting at 10:00 am

(VFW PARKING LOT)

FOR INFORMATION CALL 928-564-2441

Equal Opportunity Provider

...★...

OUTPOST 86444



Hours of Operation

Monday - Friday 10:30 am 'til 5 pm
Saturday 11 am 'til 2 pm

LARGE SELECTION OF GREETING
CARDS AND QUICK GIFT ITEMS

HANDMADE SOAPS . HONEY .
DOG TREATS
ALL LOCALLY MADE!

COPY . SCAN . FAX . EMAIL
NOTARY . SHIPPING . PRINTING
QUALITY COLOR AND B&W COPIES
USPS POST OFFICE BOXES
THIS, THAT, & MORE

928-377-5477

250 E Pueblo Dr
(Next to the Post Office)



BoatHouse Cafe & Grille



BURGERS

&

BREWS

served with a

VIEW



30185 N Escalante Blvd • (928) 328-8850 • www.meadviewboathouse.com

The MCA's Board of Governors has requested members to fill out a "Recommendation & Suggestion" slip to help the Board of Governors better understand how they can serve the MCA Members. The slips can be found in the office and the entrance area of the auditorium. The Board thanks all of you who have taken the time to fill out these slips. Some of the slips requested the Board of Governors to form.

Shuffle board leagues, weekly card games, bring in local music bands and have miniature golf tournaments. All excellent ideas except the part about the Board doing it! The Board of Governors has made available the setting for these recreational activities, but they truly have enough to do without facilitating a type of Club Med.

The MCA Members are encouraged to reach out to one another and form their own clubs or leagues. I suggest that you visit the office and ask one of the staff members to help you write a little article about your recreational interest, give your name, and a way for those interested to get in touch with you. The MCA will gladly put the article in the Monitor and on the MCA website.

Advertising rates

This is a Bi-Monthly Publication.

- Business Card—\$6 per issue or \$36 per year,
- 1/4 Page = \$10 per issue or \$60 per year,
- 1/2 Page—\$20 per issue or \$120 per year,
- Full Page - \$40 per issue or \$240 per year.

Please make checks payable to:

Meadview Civic Association
P.O. Box 217
Meadview, AZ 86444

Note:

- * All ads must be paid in advance.
- * Sorry, no refunds for cancellations.
- * The MCA reserves the right to edit or refuse submissions.





Meadview Civic Association

Billing Options:

E-Billing: We would need your e-mail address.

Snail Mail: We would need your mailing address.

Payment Options:

Bill Pay: This you set up from your online banking.

Credit/Debit Card: You would call or come into the office for us to process a payment.

Check: Write us a check and either bring it to the office or mail it.

Money Order: Purchase a Money Order and fill it out and either bring it to the office or mail it to us.

Cashier's Check:

Purchase a Cashier's Check and fill it out and either bring it to the office or mail it to us.

Cash: Please DO NOT mail cash. Please come into the office and make your payment. We will always provide you with a receipt for cash payments. (Receipts for copies or faxes upon request.)

PayPal:

If you have a PayPal Account– Use your PayPal Account to pay your Annual Assessments to our PayPal Account.

If you DO NOT have a PayPal Account– You may make a payment through PayPal using your Credit Card. However, there is a charge. When paying this way you will need to add that charge amount to the purchase amount.

ALL GOD'S CREATURES DOG WALKING AND IN-HOME PET SITTING

Keep your pet home where
it is safe and
happy



2013 HALO Advocacy and Rescue Award Winner
2014 Cat Fancy Animal Rescue Award Winner

For more information, please call
Cheryl Frey at

(714) 686-8302 (cell)

IMPORTANT NOTICE NEW RESIDENTS

*Please help our emergency responders identify your
property by posting your
address in clear view.*



RESCUE TEAM

Meadview Civic Association Inc. The purpose of our organization is to foster & encourage the civic advancement of our members and/or property owners. However, Social Membership applications are also cogitated. In August of 1970, the owners of the Meadview subdivision determined that to maintain the friendly small town attraction of Meadview, a central meeting & recreational facility was needed. They set up the MCA with involuntary membership to property owners. A number of Meadview families agreed and the Articles of Incorporation were created and accepted by the State of Arizona. With an \$80,000 loan to erect the facility; construction of the lounge, kitchen and pool began January of 1971 and completed in July that same year.

MEADVIEW CIVIC ASSOCIATION, INC.

NAME _____ DATE _____

ADDRESS UPDATE	Please fill out and return with your payment!
Mailing Address	
City, State & Zip	
Phone #	
Alt. Phone #	

Facility & Office Hours:

Facility - 8 a.m. to 9 p.m., 7 days a week

Office - Tuesday - Friday 9 a.m. to 4 p.m. / Saturday 9 a.m. to 1 p.m.

CLOSED - Sunday & Monday

**Meadview Civic
Association Inc.
247 E. Meadview
Blvd.
P.O. Box 217
Meadview, AZ
86444**

Phone: 928-564-
2313

Fax: 928-564-2520

E-mail:

mca@citlink.net

Website: mca-az.com

