

# Meadview Civic Association Inc.



## Meadview Monitor

*FEBRUARY 1965 VOL 3, NO1*

### DISCLAIMER:

The Meadview Monitor is an official publication of the Meadview Civic Association (MCA, a membership association) P.O. Box 217, Meadview, AZ 86444. (928) 564-2313, Fax (928) 564-2520, or email: [mca@citlink.net](mailto:mca@citlink.net) (please put "Meadview Monitor" in the subject line.) Notice in the Meadview Monitor is official notice of any and all proceedings of the MCA.

Submissions become the property of The Meadview Monitor. We will not publish any letters or ads that are unsuitable for this newsletter or for which the MCA be held liable. The Board of Governors will make the final decisions on those letters, ads and/or articles that are printed. All articles must have a by-line. All letters must have a name and a traceable address.



## BOARD OF GOVERNORS & STAFF

**Sharon Baur:** President

**Jack McGinnis:** V-President

**Rita Caldwell:** Treasurer

**Clyde Haggerty:** Secretary

**Larry Reilley:** Director

**Ron Balsamo:** Director

**Staff Members:**

**Lydia Marrero:** Member  
Services Representative,  
Notary

**Julie Harris:** Member  
Services Representative,  
Notary & Contributing Editor

**Fred Ellis:** Maintenance

**Michael O'Keeffe:**  
Maintenance

**Bob Reynold:** Security

**Richard (Woody) Wood:**  
Security

**Ronald Wood:** Security





# meadview monitor



BULK RATE  
U. S. POSTAGE  
**PAID**  
PERMIT NO. 2  
Bullhead City, Arizona

Return Requested

VOL. 3, NO. 1

MEADVIEW, ARIZONA

FEBRUARY, 1965

## New Lake Access Road For Meadview

## ENGINEERING CONTRACT AWARDED



MEADVIEW RESIDENT MANAGER, GERY WAKEFIELD (LEFT) AND ENGINEER RAY AREGOOD STUDY PLANS OF THE AREA.



RAY AREGOOD, GARY STREET, DICK LEOPOLDUS AND BOB RICHER, ALL WITH CONTINENTAL ENGINEERS OF DENVER COLORADO, LOOK OVER MAPS BEFORE STARTING ENGINEERING WORK. NEW ACCESS ROAD WILL CONNECT PIERCE FERRY ROAD WITH LAKE MEAD APPROXIMATELY 1 MILE SOUTH OF SANDY POINT. ALIGNMENT OF NEW ROAD WILL RUN BETWEEN THE TWIN BUTTES WHICH CAN BE SEEN IN BACKGROUND OF PHOTO.

### EARLY RESIDENTS RETURN

Many MEADVIEW visitors will remember Pete and Flossie Curtis, the original managers of the Meadview Marina.

Pete and Flossie came to MEADVIEW originally in 1960 from Williams, Arizona. They later moved to Texas and then returned to open the Meadview Marina. They subsequently toured other parts of the United States, but let's let Pete and Flossie tell you their story in their own words:

"Two years ago, we packed out suitcases, hooked up our little trailer, and left Meadview in search of a new and better land. Our first stop was Oregon, but it was cold and wet, so we thought California would be the ideal place for us. We were not a bit happy with the liquid sunshine there either, so we finally left California and decided maybe Washington state would be the place.

"Yes sir, it was beautiful all right - Lakes - Rivers - lots of apples - rattle-snakes too, but it was beautiful. So we operated a cafe in Omak, Washington, hoping someday we could go fishing and hunting, but all we had time to do was listen to the 'tall tales' of the big fish and big bucks, just like the Meadview Marina fishing and hunting stories. So we tried to outdo those Washington stories with our tales of Lake Mead (which is bigger than their lakes). That did it. We got so homesick for Lake Mead, Meadview, and Arizona, we sold out and came back home.

"We now live in Kingman, but all our spare time is spent at Meadview, which to us is the prettiest place we have ever seen. Mighty glad to be back in 'God's Country.'"

Pete and Flossie Curtis (it's mighty good to have you folks back too.)

Arizona's Third District Congressman, George F. Senner, announced last week that the National Park Service has awarded a contract for photogrammetric and engineering study for the design of an access road, boat launching ramp and parking area at Gregg's Basin on Lake Mead.

A contract in the amount of \$21,260.00 has been issued to Continental Engineers of Denver, Colorado. The specific location of the proposed landing is 1 mile south of Sandy Point.

The engineering work is already under way. Ray Aregood, Gary Street, Dick Leopoldus, and Bob Richer, all with Continental Engineers have moved into the site for the initial operations. They are staying at Meadview during the period of their work.

It is anticipated that it will take between sixty and ninety days to complete this phase of the engineering. Original estimate for the cost of construction of the access road is \$875,000.00. Present predictions indicate that this amount will be included in this year's Federal budget, thereby making the funds available after July of this year for construction. If the schedule is maintained as planned, completion of the road and launching ramp should be somewhere in mid-1966.

It is anticipated that immediately upon opening of this landing, it will become one of the most popular access points on all of Lake Mead. The beauty of the Upper Basin Area and the excellent fishing to be found there have attracted sportsmen, fishermen and boaters for many years.

This project was made possible through the continuing cooperation and efforts of the National Park Service, Mohave County Board of Supervisors, and RIVCOR.



PETE AND FLOSSIE CURTIS, CHATTING WITH GERY WAKEFIELD, LOOK HAPPY TO BE BACK IN "GOD'S COUNTRY."

### NEW FORMAT

Starting with this issue of the Meadview Monitor a new format has been devised. You will note that the

new paper is tabloid size and printed on newspaper stock. All future issues of the Monitor will be prepared in this same manner.

It is expected that the new size and type of paper will be able to keep you better informed as to the current happenings and activities at Meadview.

**FOR MAP  
SHOWING  
LOCATION OF  
NEW ACCESS ROAD,  
SEE PAGE 3.**



## The Miracle of Lake Mead ARIZONA'S MAGIC WATER HIGHWAY

This is one of a series of re-prints from past issues of "Arizona Highways" magazine recently made available to Rivor President Frank Glindmeier. The magazines date back into the '30s and provide an exciting historical insight into the Lake Mead area of over the past thirty years. The following story is reprinted from the July, 1941 edition of "Arizona Highways," stories and pictures by Weldon F. Head.

Blue waters under a desert sun. White sails against barren cliffs. Sleek launches awakening echoes in lonely canyons. Outboard motors among the cactus. That is Lake Mead - the new Arizona playground.

Behind Boulder Dam the waters of the Colorado River have slowly backed up into the largest man-made lake in the world. Over one hundred miles long, it winds through the heart of a rugged desert country of colorful buttes, mesas and sandstone temples, to its head buried in the stupendous gorge of the Grand Canyon.

Before the building of the dam few had braved this strange, silent land lying along the border between Arizona and Nevada; a handful of miners had prospected its inhospitable hills and occasional canyons. But they seldom stayed and they left no mark.

Now all is changed. A smooth highway of water penetrates to the innermost recesses of the region, inviting everyone to explore by boat one of the continent's last frontiers.

After seeing Lake Mead from the great rampart of Boulder Dam we could not ignore its invitation, so it was not long before we were backing away from the boat landing in a shiny motor cruiser and cutting across the blue water toward some chocolate-colored mountains on the farther shore.

The passengers on board were a miner and an engineer bound for a gold claim, a naturalist going out to take motion pictures for the National Park Service, several tourists and an old prospector who had a cabin far up the lake.

It took some time to accustom ourselves to the novelty of cruising on the desert. Islands and reefs flashed by, fantastic rock formations in riotous colors rose above the water and danced crazily in their own reflection, the long snowy ridges of Mount Charleston followed us far to the west, while over all was the bluest of desert skies.

The friendliness of the open spaces prevailed on board. It was not long before each passenger was showing his special sights to everyone else. Just before reaching Boulder Canyon the old prospector pointed far up a high cliff.

"See that white dot yonder?" he asked.

"Oh, it's a mountain goat!" shrieked a lady tourist.

"No ma'am. That there is a wild burro."

"Burro!" we said, incredulously, not believing anything but a fly or a rock climber could stick to that cliff. "Yep," said the prospector. "There's a bunch of 'em 'round here, this white critter plays a lone hand. He's been up on that mountain off and on for two weeks now. Think he owns it, I reckon. I saw him and a brown one havin' a set-to a few days ago down by the lake. What a fight! They bit and chawed each other, then rolled over'n over, slashin' and kickin' like devils, 'til the white one drove the brown one off. Yes, sir. That white one is poison! He's meaner'n than a stack of black wildcats."

We had quitted the lower lake basin and were threading our way through Boulder Canyon. Steep walls of dark gray rock rose above us in forbidding capes and pinacles. Deep ravines sloped back to the jagged skyline. It was utterly wild and desolate, like some frozen, lifeless fjord of the far north. Here the original Boulder Dam was to have been built, a thousand feet high, and for some reason the name "Boulder" stuck to the present structure in Black Canyon, twenty miles downstream.

It was almost a relief to emerge from the dark gorge into the broad, sun-filled reaches of the Virgin Basin. This is the largest part of Lake Mead, stretching for miles up the Virgin River to the Lost City of prehistoric men and the Valley of Fire. It is a place of wide vistas, the bluest water, and multi-colored mountains etched with purple shadows. To the north are hills, burned, seared and twisted as if by tremendous heat. Among them lie light green beds of gypsum.

"Landed a man, his wife and their kid over there yesterday," said the pilot. "They own all that and they're figuring to take out the gypsum with power shovels and load it into barges before the water covers any more of their claim."

The coming of the lake has given renewed energy to mining in this section. Signs of activity are evident everywhere: white tents far up the mountainsides, miners' boats tied to the shore, while every other man we met has plans for wresting a fortune from this forbidding land. "My claim averages about fifty dollars to the ton," said the miner, "but it might just as well have been on the moon for all the good it did me. Seventy miles out by road - if you'd call it a road - and grades that took the heart out of a truck the first time in. But now the water comes within twenty-five feet of my shack, when she's high," he ended happily.

We edged into a narrow cove in Iceberg Canyon and dropped him and the engineer.

"We'll put a flag upon the point when we want to come out," they called to the pilot.

"Good luck!" we shouted as the cruiser backed away,

leaving them to shoulder their packs for the climb over the hill to the canyon.

On we went, twisting and turning, past the sheer white cliffs of Temple Bar, by Napoleon's Tomb, under mountains standing on edge with strata shelving down into the water like shingles on a giant roof, past distorted formations of brilliant red travertine traversed with bands of green and yellow, until at last we turned a corner and entered the upper basin backed by the mile-high walls of Grand Wash Cliffs. Here on a peninsula overlooking the most spectacular part of the lake is Pierce Ferry Camp; a community of tents lost in the immensity of its surroundings.

As we approached the dock C.C.C. boys from a fly camp nearby were burning great piles of driftwood on the shore. Thousands of logs of juniper, pinon and cottonwood are brought down by the river each year, and during the spring floods, become a serious hazard to navigation on the upper lake. Several years ago miles of densely packed logs closed the canyon, taking two months of work to clear. Stranded along the lake shore is enough wood to heat a city for a month. It is unfortunate that it is destined to waste its warmth in the desert air.

After we had lunched at Pierce Ferry, the cruiser left us to hurry the other passengers up the Grand Canyon and back to Boulder City, for it had a schedule to maintain, while we followed at a more leisurely pace in an open boat.

The canyon section is the climax of Lake Mead. It is one of the most spectacular waterways in the world, rivaling the fjords of Norway, the inlets of Alaska, or even the river trenches of Asia.

The Grand Canyon is but one of nineteen similar gorges on the Colorado River between Wyoming and the Gulf of Mexico, but it is by far the largest of them all. More than five thousand feet deep it is out into the high plateaus of Arizona for two hundred and seventeen miles. The building of Boulder Dam has backed up the waters of Lake Mead into the lower twenty miles of the canyon, permitting tourists to visit with ease one of nature's last strongholds; to view in comfort a part of the world seen formerly by a few adventurers after weeks of hardship. Although this is perhaps the most impressive part of the entire canyon, "a single, deep, narrow slash in the face of the earth," it is so remote that at the head of navigation one is still more than a hundred miles from the world-famous Grand Canyon viewpoints of the South and North Rims.

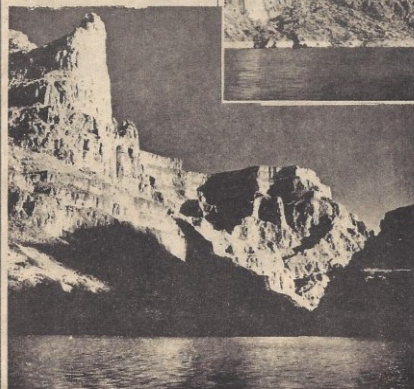
The introduction to the canyon is dramatically sudden. Passing between mile-high portals, we instantly plunged into mid-afternoon twilight. Above us soared rock castles, towers, square bastions, turrets and pointed spires bathed in brilliant sunshine. Deep blue shadows slanted across vast amphitheatres and threw fantastic outlines on the canyon walls. The intense contrast between light and shade was startling - as if night and day were struggling for possession of each cliff and slope. We had been transported to a world of titanic forces in which time and man meant nothing.

At every turn the gorge grew narrower and the walls rose higher, the peaks and crags on such gigantic scale that the half-mile strip of water wound beneath them like a ribbon. Around a bend gleamed Emory Falls, a streak of silver against the red rock. We stopped to explore the basin beneath this one hundred and fifty foot water fall. It was a secluded spot of tinkling water and dripping cliffs hung with mosses and ferns, festooned with wild grape vines - a vertical oasis against a barren wall of stone.

Mile after mile we sped into the heart of the canyon; by grim ravines curving back to an unknown wilderness;

### NEW FEATURE

STARTING WITH THIS ISSUE, THE MEADVIEW MONITOR WILL CARRY A CROSSWORD PUZZLE. BELOW IS THE ANSWER TO THE PUZZLE ON PAGE 4.



## meadview monitor

PUBLISHED FOR AND BY  
THE RESIDENTS AND OWNERS OF

## MEADVIEW

DEVELOPED BY

RIVCOR

BOX 237

BULLHEAD CITY ARIZONA  
754-8871

under lacy curtains of travertine rock; and past caves of prehistoric men appearing like swallows' nests in the canyon walls; until muddy water and floating debris warned us that the river was near. The lake still stretched ahead, smooth and tempting, but we had reached the head of navigation. How we longed to know what mystery lay concealed around the next bend! The explorers' fever had gotten into our blood. It was with reluctance that we turned around and chugged the twenty miles back to Pierce Ferry.

That night, seated around a roaring campfire under the stars, we still felt the spell of Lake Mead and we were thankful that it can never be spoiled by private exploitation. The lake and its unique desert setting has been set aside by the government as Boulder Dam National Recreational Park for the enjoyment of all the people forever. Boulder City, Overton and Pierce Ferry are centers where hotels, museums and recreational facilities will be developed. Already airports and roads have been built so that Pierce Ferry is but three hours by car from Boulder City, the last forty-five miles through a magnificent Joshua Tree forest.

Although these improvements at Lake Mead are much to be desired, the hotels and resorts along the shore will put an end to the feeling of discovery and pioneering in remote places which thrills the traveler today.

Enjoyment of all the people forever, did we say? Well, not quite forever.

We asked an engineer at the dam how long it would take for Lake Mead to become silted up and disappear.

"Two hundred years," he answered. "But we can stretch it out four hundred by building silt dams on the side streams."

"What then?" we asked.

He smiled.

"I guess we'll let somebody else worry about that."



BLUE WATERS  
UNDER AN  
ARIZONA SKY!

BARREN CLIFFS OF  
SOMBER HUES!

NARROW CANYONS!

SLEEK LAUNCHES  
AND OUTBOARD  
MOTORS!

LAKE MEAD!



### AN OPEN LETTER FROM THE DEVELOPERS:

In order to better familiarize you with your Development Company and the people behind it, we would like to take this opportunity to review our last year's company and personal activities.

As most of you know, our business activities have been conducted in Mohave County as well as in the Phoenix area, and we have officed and lived in Phoenix, Arizona, for the past 20 years. As Mohave County continued to grow and expand, we continued to become more and more involved in the County's affairs and in additional land ownership in the area.

Last summer it became apparent that our affairs in the Phoenix area were becoming less and our time spent in Mohave County was becoming more and more. It was therefore apparent that we should give serious thought to moving to the area where our primary business was located.

After further consideration and discussion, we decided that all that was needed to tip the scales in this favor was another development in the area. We purposely made a 10 day trip to Mohave County in order to further study the entire area and make an intelligent decision as to our future plans. It was on this trip that we discovered another development that was to make one of the largest changes in our company operation and in our own personal lives. This development was the Colorado Riviera. We were very impressed with the potential of the development and subsequent negotiations with the original developer led to our purchase of the entire project.

This then was the final straw, so to speak, that broke the camel's back, and forced our move to the Mohave County area. Our decision to move to the river and lake country brought about many personal and business interruptions of course, but we are now firmly entrenched, complete with our families and entire office staff. Due to the wide variety of activities that the company was engaging in, it was felt that it would be more advantageous to change the company name to one which would more harmoniously blend with the varied activities, therefore the name RIVCOR was selected as a replacement for Meadview Development Co. Inc.

Now we are in a better position to supervise and control all of our operations in this area. We selected the Riviera for the location of our own personal residence because it was where we would be spending the majority of our time for the next year. Because we were in the area, it was possible to devote more time now to the road access situation at Meadview.

It is with much more than pleasure that we are able to announce in this issue of the Monitor that our efforts have finally culminated in success. We had, of course, been working on this access road for the last 2 years, for the entire future of the MEADVIEW development is contingent upon proper and continuous lake access. Very frankly, the development of the project has been somewhat delayed for the past year and a half for this very reason. Now that the road is under way we anticipate that the next year and a half will see more development in the MEADVIEW project than in all the previous years combined. I know that all our friends and owners share our enthusiasm and have also been waiting for this very development. To all of you who have given your cooperation and worked with us during this period, we express our sincere thanks for your consideration and your confidence.

With respect to our plans for the future at MEADVIEW, we fully intend to stimulate the development and expansion of the project immediately upon start of construction of the access road. Upon its completion, we will have more traffic and visitors to this area than anything that's ever been known before.

We are proud of our new development too, the Riviera. Totally different from Meadview, it is an established community offering full facilities for those who wish to live here today. So that you may be kept current on all of our activities, we would like to tell you something about it and within the next 2 weeks you will receive

additional information on this project.

It is with all sincerity that we say that it is a true pleasure to be living in what we believe to be one of the finest areas in the entire country. We look forward to the future and an opportunity to serve our owners and residents even further.

Sincerely,  
RIVCOR

Frank E. Glindmeier  
President

Paul F. Mullane  
Secretary-Treasurer



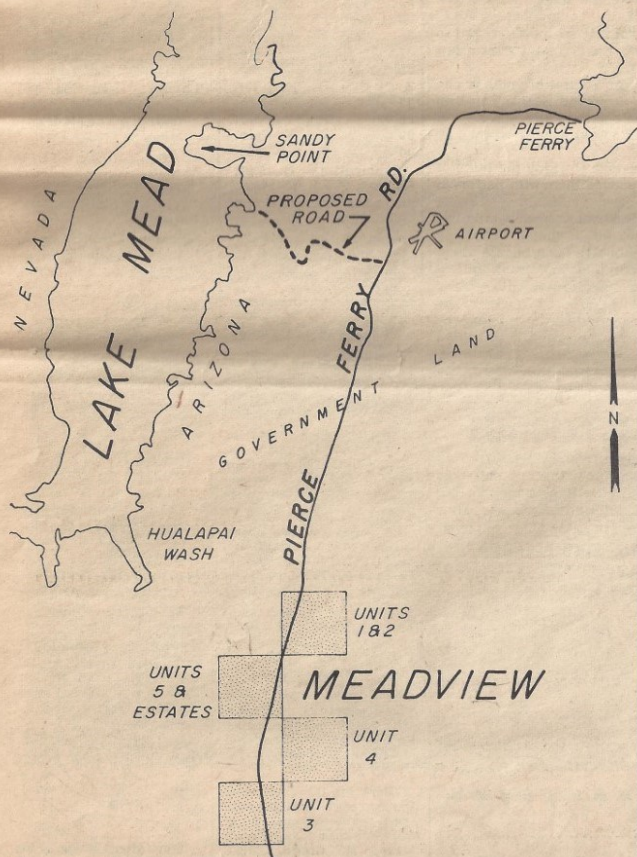
RIVCOR PRESIDENT  
Frank E. Glindmeier



RIVCOR SEC'Y-TREAS.  
Paul F. Mullane



THE GRAND CANYON  
HUMPS ITS HIGH SHOULDERS A MILE HIGH.



## YOUR VERY OWN, PERSONAL HIDE-A-WAY

Picture you and your family in a hide-a-way home in one of the most scenic mountain and lake settings in the Southwest. Homes with elevations up to 4,000 feet surrounded by one of the nation's largest Joshua forests. Healthy, invigorating fresh air and sunshine with Lake Mead at your doorstep.



**\$15. DOWN / \$15. MONTHLY**  
**FOR A FULL 1 ACRE LAKE ESTATE**

Meadview, the only privately owned and developed land inside the Lake Mead National Recreational Area, offers you a new world of resort living.

Fish, hunt, water ski, ride or just plain relax away from it all.

Full one acre lake estates from \$995.00.

**WRITE MEADVIEW TODAY!**

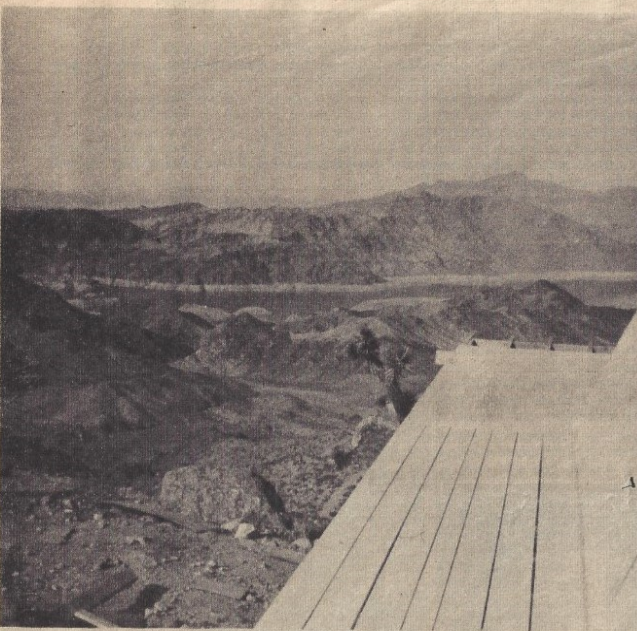
MAIL COUPON TO

RIVCOR  
BOX 237  
BULLHEAD CITY, ARIZONA

Name \_\_\_\_\_  
Address \_\_\_\_\_  
City \_\_\_\_\_ State \_\_\_\_\_  
Phone \_\_\_\_\_

# meadview





WHAT A FRONT PORCH VIEW! LAKE MEAD, 2 MILES DISTANT & 2000 FEET BELOW PROVIDES A PERFECT VIEW FROM THE PORCH OF THE COTTAGE OF MR. & MRS. STANLEY OLSON (LOT 27).

## CROSSWORD PUZZLE

<b>ACROSS</b>	<b>DOWN</b>	
1. Young horse	1. Capital of So. Carolina	16. Soak
5. Rolls	2. Japanese	19. Exclamation
9. Of a lobe	3. Actress: saah	21. Fuel
10. Join	4. Prickly	22. Likely
12. Similar	5. Woody	23. Necessitated
13. Become ready to eat, as fruit	6. Regulation	25. Irritate
14. Greek letter	7. Indian outfit	26. Constituent
15. Ever: poet.	8. Let it palm	27. Moisture
17. Lord, butter, etc.	9. Escape: al.	29. Over: poet.
18. Mother: colloq.	10. Half ems	32. Diocesan center
20. Utah's state flower		35. Strikes
22. Dexterous		37. Obtained
24. Covered with tar		38. Spoken
28. Musical instrument		
30. A pleased, happy expression		
31. Savors		
33. Killed		
34. Greek god of war		
36. Measure		
37. Desert: Asia		
40. Old times		
42. Exclamation		
44. Silk scarf: Eccl.		
46. Sphere of action		
48. Falsehoods		
49. Slightly crazy		
50. Covars		
51. Mineral springs		

PUZZLE NO. 822



RECONNAISSANCE FLIGHT HAS BEEN MADE OF NEW ROAD AREA BY CONTINENTAL PHOTOGRAPHERS JIM PICKERALL AND SANDY SANDOVAL. PLANE IS PIPER TWIN COMMANCHE AND IS ON PIERCE FERRY AIRSTRIP.

## Fisherman's Calendar

FEBRUARY, 1965			MARCH, 1965		
1	F	Ev.	1	F	Mo.
2	F	Ev.	2	G	Mo.
3	G	Ev.			
4	B	Ev.			
5	B	Ev.			
6	P	Ev.			
7	P	Ev.			
8	F	Ev.			
9	F	Mo.			
10	P	Mo.			
11	P	Mo.			
12	B	Mo.			
13	B	Mo.			
14	F	Mo.			
15	F	Ev.			
16	G	Ev.			
17	G	Ev.			
18	F	Ev.			
19	P	Ev.			
20	G	Ev.			
21	G	Ev.			
22	G	Mo.			
23	P	Mo.			
24	P	Mo.			
25	F	Mo.			
26	F	Mo.			
27	F	Mo.			
28	G	Mo.			



APRIL, 1965		
1	P	Ev.
2	P	Ev.
3	P	Ev.
4	F	Ev.
5	F	Ev.
6	P	Ev.
7	P	Ev.
8	B	Mo.
9	B	Mo.
10	P	Mo.
11	P	Mo.
12	G	Mo.
13	G	Mo.
14	F	Ev.
15	F	Ev.
16	B	Ev.
17	B	Ev.
18	B	Ev.
19	P	Ev.
20	P	Ev.
21	F	Ev.
22	F	Ev.
23	F	Ev.
24	G	Mo.
25	G	Mo.
26	G	Mo.
27	G	Mo.
28	G	Mo.
29	G	Mo.
30	G	Mo.
31	G	Mo.

## LAS VEGAS SHOW SCHEDULE

### THE STRIP

DESERT INN  
"HELLO AMERICA"  
starring DAVIS & REESE & a Cast of 80  
- Indef.

Lounge; Jan Garber & Orch; Happy Jesters; Mafalda Trio  
Sky Room: The Cousins (Dancing)

DUNES  
"CASINO DE PARIS"  
starring LINE RE-NAUD - Indefinitely  
Lounge: "Vive Les Girls" - Indefinitely

FLAMINGO  
JACK CARTER; MOLLY BEE  
Thru Feb. 24:  
GORDON & SHEILA MAC RAE  
Lounge: Fats Domino

HACIENDA  
DANNY OWENS;  
JOHNNY OLENN;  
KAY HOUSTON GROUP; HEART-BREAKERS - Indefinitely

NEW FRONTIER  
"RHAPSODY ONICE"  
with JAY NEMETH; LOS CORSARIOS;  
JANIE, ROY and BOB; TOM HARKENRIDER - Indefinitely

RIVIERA  
Thru Mar. 7:  
DEBBIE REYNOLDS  
Lounge: Ray Anthony

SAHARA  
Thru Feb. 22:  
DONALD O'CONNOR;  
SHARI LEWIS  
Feb. 23 - Mar 22:  
MILTON BERLE  
Lounge: Thru Feb. 15:  
Tex Beneke, Ray Eberle & The Modernaires

SANDS  
Thru Feb. 16:  
ALAN KING; BUDDY GRECO  
Lounge: Sonny King & Vido Musso; Tommy Leonetti; Jerry Wald

STARDUST  
LE LIDO DE PARIS - "BRAVO!" - Indefinitely  
Lounge: Kim Sisters; Nalani Kele's Polynesian Revue; The Novelites

THUNDERBIRD  
"THE ALL-NEW ZIEGFELD FOLLIES" - Indefinitely  
Lounge: Gaylord & Holiday

TROPICANA  
"NEW 1965 FOLIES BERGERE" - Indefinitely  
Lounge: Mary Kaye Trio; Carmen Cavallaro



## A VERY WORTHWHILE THOUGHT

The following prayer was submitted to us by one of our property owners. We felt that it had so much merit that we have included it in the paper.

"Lord, Thou knowest better than I know myself that I am growing older and will some day be old. Keep me from the fatal habit of thinking I must say something on every occasion. Release me from craving to straighten out everybody's affairs. Make me thoughtful but not moody, helpful but not bossy.

"With my vast store of wisdom, it seems a pity not to use it all, but Thou knowest, Lord, that I want a few friends at the end.

"Keep my mind free from the recital of endless details, give me wings to get to the point. Seal my lips on my aches and pains. They are increasing and love of rehearsing them is becoming sweeter as the years go by.

"I dare not ask for grace enough to enjoy the tales of others' pains but help me to endure them with patience. I dare not ask for improved memory but for a growing humility and a lessening cocksureness when my memory seems to clash with the memories of others. Teach me the glorious lesson that occasionally I may be mistaken. "Keep me reasonably sweet; I do not want to be a saint - some of them are so hard to live with - but a sour old person is one of the crowning works of the devil. Give me the ability to see good things in unexpected people. And give me, Lord, the grace to tell them so." Amen.

(Author Unknown)

Explanation: B Best; G Good; F Fair; P Poor. Mo. and Ev. give the best time of day, but are subject to change by local conditions such as high winds, storms or cold.



## Monitor For Friends

We have received many requests from property owners to mail the MEADVIEW MONITOR to their friends and relatives living elsewhere. We will be happy to put them on the mailing list. Just fill out the spaces below and mail to; RIVCOR, Box 237, Bullhead City, Arizona.

### PLEASE SEND THE FOLLOWING PERSONS COMPLIMENTARY COPIES OF THE MEADVIEW MONITOR

NAME.....  
ADDRESS.....  
CITY.....STATE.....

NAME.....  
ADDRESS.....  
CITY.....STATE.....

\*\*\*\*\*

REQUESTED BY.....  
ADDRESS.....  
CITY.....STATE.....





## V.F.W. Post 11014 GOOD EATS!

### •SECOND SUNDAY OF THE MONTH

•SPAGHETTI 5-7 P.M.

•TACO TUESDAYS 5-7 P.M.

•FISH FRIDAYS 5-7 P.M.

Check the V.F.W. Calendar to see if there is a scheduled  
Dinner for Wednesdays.

DINNER SERVED TO THE PUBLIC,  
MEMBERS AND

NON-MEMBERS ARE WELCOME!

**COME JOIN US!**



### Submit Your Photos!

We would love to receive your photos of Meadview and the surrounding area. Those pics just might find a place in future Meadview Monitor publications and/or our website for other members to enjoy viewing. Please submit photographs to our e-mail address: [mca@citlink.net](mailto:mca@citlink.net).

## V.F.W. Post #11014



### VFW FOOD BANK DISTRIBUTION

#### Meadview Area Nutritional Assistance

Food distribution is on the Second Tuesday of each month

**Starting at 10:00 am**

**(VFW PARKING LOT)**

**FOR INFORMATION CALL 928-564-2441**

**Equal Opportunity Provider**



...★...

# OUTPOST 86444



## Hours of Operation

Monday - Friday 10:30 am 'til 5 pm  
Saturday 11 am 'til 2 pm

LARGE SELECTION OF GREETING  
CARDS AND QUICK GIFT ITEMS

HANDMADE SOAPS . HONEY .  
DOG TREATS  
ALL LOCALLY MADE!

COPY . SCAN . FAX . EMAIL  
NOTARY . SHIPPING . PRINTING  
QUALITY COLOR AND B&W COPIES  
USPS POST OFFICE BOXES  
THIS, THAT, & MORE

928-377-5477

250 E Pueblo Dr  
(Next to the Post Office)





# BoatHouse Cafe & Grille



## BURGERS

## &

## BREWS

served with a

## VIEW



30185 N Escalante Blvd • (928) 328-8850 • [www.meadviewboathouse.com](http://www.meadviewboathouse.com)



The MCA's Board of Governors has requested members to fill out a "Recommendation & Suggestion" slip to help the Board of Governors better understand how they can serve the MCA Members. The slips can be found in the office and the entrance area of the auditorium. The Board thanks all of you who have taken the time to fill out these slips. Some of the slips requested the Board of Governors to form.

Shuffle board leagues, weekly card games, bring in local music bands and have miniature golf tournaments. All excellent ideas except the part about the Board doing it! The Board of Governors has made available the setting for these recreational activities, but they truly have enough to do without facilitating a type of Club Med.

The MCA Members are encouraged to reach out to one another and form their own clubs or leagues. I suggest that you visit the office and ask one of the staff members to help you write a little article about your recreational interest, give your name, and a way for those interested to get in touch with you. The MCA will gladly put the article in the Monitor and on the MCA website.

### **Advertising rates**

This is a Bi-Monthly Publication.

- Business Card—\$6 per issue or \$36 per year,
- 1/4 Page = \$10 per issue or \$60 per year,
- 1/2 Page—\$20 per issue or \$120 per year,
- Full Page - \$40 per issue or \$240 per year.

Please make checks payable to:

Meadview Civic Association  
P.O. Box 217  
Meadview, AZ 86444

#### **Note:**

- \* All ads must be paid in advance.
- \* Sorry, no refunds for cancellations.
- \* The MCA reserves the right to edit or refuse submissions.







### Meadview Civic Association

#### Billing Options:

**E-Billing:** We would need your e-mail address.

**Snail Mail:** We would need your mailing address.

#### Payment Options:

**Bill Pay:** This you set up from your online banking.

**Credit/Debit Card:** You would call or come into the office for us to process a payment.

**Check:** Write us a check and either bring it to the office or mail it.

**Money Order:** Purchase a Money Order and fill it out and either bring it to the office or mail it to us.

#### Cashier's Check:

Purchase a Cashier's Check and fill it out and either bring it to the office or mail it to us.

**Cash:** Please DO NOT mail cash. Please come into the office and make your payment. We will always provide you with a receipt for cash payments. (Receipts for copies or faxes upon request.)

#### PayPal:

*If you have a PayPal Account–* Use your PayPal Account to pay your Annual Assessments to our PayPal Account.

*If you DO NOT have a PayPal Account–* You may make a payment through PayPal using your Credit Card. However, there is a charge. When paying this way you will need to add that charge amount to the purchase amount.

## ALL GOD'S CREATURES DOG WALKING AND IN-HOME PET SITTING

Keep your pet home where  
it is safe and  
happy



2013 HALO Advocacy and Rescue Award Winner  
2014 Cat Fancy Animal Rescue Award Winner

For more information, please call  
Cheryl Frey at

(714) 686-8302 (cell)

### IMPORTANT NOTICE NEW RESIDENTS

*Please help our emergency responders identify your  
property by posting your  
address in clear view.*



## RESCUE TEAM



*Meadview Civic Association Inc. The purpose of our organization is to foster & encourage the civic advancement of our members and/or property owners. However, Social Membership applications are also cogitated. In August of 1970, the owners of the Meadview subdivision determined that to maintain the friendly small town attraction of Meadview, a central meeting & recreational facility was needed. They set up the MCA with involuntary membership to property owners. A number of Meadview families agreed and the Articles of Incorporation were created and accepted by the State of Arizona. With an \$80,000 loan to erect the facility; construction of the lounge, kitchen and pool began January of 1971 and completed in July that same year.*

## MEADVIEW CIVIC ASSOCIATION, INC.

NAME \_\_\_\_\_ DATE \_\_\_\_\_

ADDRESS UPDATE		Please fill out and return with your payment!
Mailing Address		
City, State & Zip		
Phone #		
Alt. Phone #		

### ***Facility & Office Hours:***

***Facility*** - 8 a.m. to 9 p.m., 7 days a week

***Office*** - Tuesday - Friday 9 a.m. to 4 p.m. / Saturday 9 a.m. to 1 p.m.

***CLOSED*** - Sunday & Monday

**Meadview Civic  
Association Inc.  
247 E. Meadview  
Blvd.  
P.O. Box 217  
Meadview, AZ  
86444**

Phone: 928-564-  
2313

Fax: 928-564-2520

E-mail:

[mca@citlink.net](mailto:mca@citlink.net)

Website: [mca-az.com](http://mca-az.com)

