

Meadview Monitor

**JAN/FEB
2018**



Photos by Nick Schmidt

INSIDE THIS ISSUE

Disclaimer.....	2
Letter from the Board.....	3
Explorers and Over The Hill Hikers News.....	3
Quail Club News.....	6
Friends of the Arizona Joshua Tree Forest.....	8
Blast From The Past.....	9-10
VFW News.....	11
Calendar of Events.....	13

SPECIAL FEATURES

Election Notice.....	4
Candidate Application.....	5



BOARD OF GOVERNORS

Don Jarvis.....President
Ray Stone.....Vice President
Dennis Kehoe.....Treasurer
Lynn Wright Murray.....Secretary
Steve Berg.....Governor
Elizabeth Buckingham...Governor

MCA EMPLOYEES

*Edie Needham....Member Services
 Supervisor & Contributing Editor*

*Sandy Henderson...Member
 Services Representative
 & Contributing Editor*

*Shannon Fry....Member Services
 Representative*

Darrell Young...Maintenance

*Larry Minard...Maintenance &
 Security*

Bob Reynolds...Security

Richard (Woody) Wood...Security

**“Meet &
 Play At
 The
 MCA”**

Facility Hours

Open from 8 a.m.—10 p.m.

7 days a week

Office Hours

Tuesday—Saturday

9 a.m.—4:30 p.m.

Closed from 12 p.m.—12:30 p.m.
 for lunch

DISCLAIMER:

The Meadview Monitor is an official publication of the Meadview Civic Association (MCA, a membership association) P.O. Box 217, Meadview, AZ 86444. (928) 564-2313, Fax (928) 564-2520, or email: mca@citlink.net (please put “Meadview Monitor” in the subject line.) Notice in the Meadview Monitor is official notice of any and all proceedings of the MCA.

Submissions become the property of The Meadview Monitor. We will not publish any letters or ads that are unsuitable for this newsletter or for which the MCA be held liable. The Board of Governors will make the final decisions on those letters, ads and/or articles that are printed. All articles must have a by-line. All letters must have a name and a traceable address.

ADVERTISEMENT RATES

This is a Bi-Monthly Publication.

Business Card - \$6 per issue or \$36 per year.

1/4 Page - \$10 per issue or \$60 per year.

Half Page - \$20 per issue or \$120 per year.

Full Page - \$40 per issue or \$240 per year.

Please make check payable to:
 Meadview Civic Association or MCA
 P.O. Box 217
 Meadview, AZ 86444

NOTE:

- * All ads must be paid in advance.
- * The MCA reserves the right to edit or refuse ads or submissions.
- * Sorry, no refunds for cancellations.

LETTER FROM THE BOARD -

The MCA property statements for the 2018 annual assessments have been mailed out. If you have not received your property statement, please contact the office.

As a reminder to our members, the annual assessment can be paid with credit card either over the phone or in person at the office. We provide another payment option through PayPal at our website, mca-az.com. At the main page of the website, click on "Make A Payment" near the top of the page and then follow the simple instructions. As always, we accept checks and good old-fashioned cash as payment.

The MCA front office is in the process of being renovated at the time of this writing. Darrell has been painting the interior of the office and doing repair work which has been much needed. We apologize for the look of things if you happen to stop by the office, it is a bit of a construction zone right now and we thank you for your patience during this time.

The MCA wishes all members a healthy and prosperous New Year!



Don Jarvis
President
Board of Governors

EXPLORERS AND OVER THE HILL HIKERS

By Suzann Newell

November was very busy with hikes and 4x4 trips; the group drove into Grapevine Wash twice to hike to Cramp Springs and the two Indian Roasting Pits. A hike up to the third water fall is the hi-light of hiking to the Grapevine springs. Vern Farris led a group into the Slot Canyon where the last view is the drop off down to the Grapevine Springs.

The 4x4 group drove the Gregg's Hideout Road down to the bay and up Hell's Canyon to visit the old village up there and the next week we drove west from Highway 93 on Cottonwood Road then thru some fantastic canyons before we came to the Portland Wash Gold Mine. This open pit mine was a good gold producer until 15 years ago, now the road winds down 3 levels to a fairly good sized lake. The 15 miles on down to Bullhead City follows the river through an area that is covered with lava bombs. The lava rocks are volley ball size up to large wash tub size.

Our annual Christmas Potluck dinner had 22 members present and a lot of scrumptious food. We have set two hikes: Dec. 28 we will hike from South Cove Road to climb up the South Monolith. On January 8 we will park along South Cove Road and hike the cliffs that overlook Lake Mead. We call a cave in those cliffs the Apartment, it is a room with a view. On the 12th we will meet at Meadview Time to drive to Fire Mountain.

As MCA members you are invited to come join us. Our regular meetings are the second Wednesday of each month, 6:30 at the MCA auditorium.

Special Notice to ALL MCA Members Legal Notice of Election

I. Candidate Eligibility:

A slate of candidates, all of whom are members in good standing of the Meadview Civic Association, shall be selected by a nominating committee. The consent of all candidates shall be obtained before placing their names on the ballot. At the annual meeting a member present may nominate a member for the Board of Governors. No write-in candidates shall be accepted unless nominated at the annual meeting. No member nominated at the annual meeting shall be considered unless the candidate consents to serve if elected. The presiding officer shall limit nominating speeches from the to one (1) minute each.

II. Who May Vote:

Only members in good standing will be eligible to vote. To be a member in good standing that all association assessments on lots being voted, have been paid in full by **2 P.M., THE FRIDAY PRIOR TO THE ANNUAL MEETING.**

III. Voting Eligibility:

A person eligible to vote in this election must be the owner or co-owner of Meadview property which is presently being assessed by the Association. One vote only may be cast for each lot so assessed. Where a lot or lots are owned by one or more persons, only one of the persons names as co-owner may vote for any one lot. Only one vote per lot is allowed.

You may vote by absentee ballot if unable to attend the meeting. You must request your absentee ballot from the Secretary of the Board. Carefully follow the instructions sent with your ballot(s) and return to the Secretary. **ABSENTEE BALLOTS MUST BE BY THE SECRETARY OF THE ASSOCIATION RECEIVED BY THE CLOSE OF THE LAST BUSINESS DAY PRIOR TO THE ANNUAL MEETING.**

IV. Verification of Voting Eligibility:

Each prospective voter will be required to present proper identification prior to receiving the ballot(s) for voting. Association records will be checked to verify that such person is a member in good standing. Each prospective voter will then be given the specific number of ballots, one for each member lot, and will then cast his/her ballot(s) immediately after verification.

Voting hours shall be from the conclusion of the annual meeting to 2:00 p.m.

There shall be no electioneering within one hundred (100) yards of the polling place.

V. Ballots for Voting:

Subsequent to verification of eligibility to vote, members will be given one (1) ballot for each lot for which he/she is authorized to cast a vote. Members, after verification of eligibility to vote, and receiving the ballot(s) shall proceed to vote and deposit said ballot(s) in the ballot box within ten (10) minutes. A member voting for more than ten (10) ballots shall have multiples of ten (10) minutes for each ten (10) ballots being voted.

VI. Voting Procedures:

A. In accordance with the desires of the majority of the

Association members as expressed at the May 28, 1988 meeting and at the prerogative of the present Board of Governors as authorized in Article III, Section I of the By-Laws of the Association, the number of persons to sit on the Board of Governors shall be seven (7).

B. Place an "X" in the box beside the name of each candidate you wish to vote for. On all propositions, place an "X" in the appropriate box. On all proposed By-Laws changes mark an "X" in the appropriate box.

C. Fold your ballot and deposit in the ballot box provided. NOTE: Voting for more candidates than seats available will invalidate the ballot.

VII. Ballot Counting:

A. After all the ballots have been cast, the Election Committee will open the ballot box and proceed to count and record the votes.

B. To verify proper performance in all aspects of the election, the election will be monitored by appointed Association members.

VIII. Installation of Officers:

A. Immediately after the determination of names of the winning candidates, the newly elected members will assume their positions on the Board.

B. In accordance with Article III of the Association By-Laws, the Board members will be elect executive officers from their owns ranks. The executive officers of the Association shall be President, Vice-President, Secretary, Assistant Secretary, Treasurer, and Assistant Treasurer.

C. This Board of Governors shall manage and control the business affairs of the Association in accordance with the terms and conditions of the Articles of Incorporation and the By-Laws of the Association.

IX. Voting by Absentee Ballot:

Members can request an absentee ballot, one for each lot on which an assessment is paid, which will list the slate of candidate dates, Propositions, and the proposed By-Law changes. The request form for absentee ballots should be filled in and mailed to:

**Secretary
Meadview Civic Association
P.O. Box 217
Meadview, AZ 86444**

Upon receipt of the request form, eligibility and number of votes entitled to be cast will be determined. The ballot(s) will be mailed to the requester with a return envelope addressed to the Secretary of the Board. After indicating your choice of candidates and By-Law changes, seal the ballot(s) in the envelope addressed to the Secretary. Walk-in Absentee ballots will be accepted until, **2 P.M., THE FRIDAY PRIOR TO THE ANNUAL MEETING.** Absentee Ballots received after **THE FRIDAY PRIOR TO THE ANNUAL MEETING** mail pick-up, will be invalid.

Upon receipt the sealed envelope with the absentee ballot showing the Bar Code of the voter shall be logged in and placed in a locked ballot box. On election Day, the Election Committee will remove the ballot from the envelope for counting purposes.

CANDIDATE APPLICATION FOR
2018 BOARD OF GOVERNORS' ELECTION

On Saturday, May 23, 2018, at the MCA Annual Membership
Meeting two (2) members will be elected for positions to serve on
the Meadview Civic Association Board of Governors.

Please fill out this application if you wish to run for the vacated offices.

Requirements are listed below:

NAME: _____

RESIDENT ADDRESS: _____

LOT #: _____

TELEPHONE #: _____

Approximate date of full-time residency on a "deeded" MCA lot: _____

An applicant must be a full-time resident for a minimum of one year.

Please provide a short biography & photo with your application.

Please return this application to the MCA office, NO LATER THAN FEBRUARY 15, 2018, to insure
publication in the March/April Monitor.

Should you have questions, you may contact:

Don Jarvis at: (928) 564-2963

Or

The MCA Office Staff at: (928) 564-2313

UPCOMING EVENTS FOR 2018

FEBRUARY 14TH - VALENTINES POTLUCK

MARCH 17TH - ST. PATTY'S GREEN BEER DAY

MAY 5TH - CINCO DE MAYO BAND PARTY

MAY 26TH - MEMORIAL DAY BAND PARTY

JUNE 29TH - JULY 2ND -

4TH OF JULY WEEKEND BAND PARTY

AUGUST 18TH - END OF SUMMER DJ PARTY

SEPTEMBER 2ND - LABOR DAY BAND PARTY

OCTOBER 27TH - HALLOWEEN BAND PARTY

NOVEMBER 16TH -THANKSGIVING POTLUCK DINNER

DECEMBER 8TH - UGLY SWEATER PARTY

DECEMBER 15TH - PAJAMA CHRISTMAS PARTY



290 E. Meadview Blvd, Meadview, AZ 86444

Tad's Auto & Marine Service & Repair

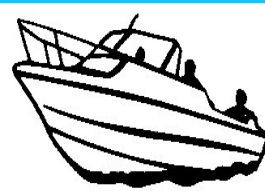


ASE Certified Mechanic
A/C Tune ups
Brakes
Suspension Computer Diagnostics
Tire Repair

**27070 N Pierce Ferry Road
Meadview, AZ 86444
(928) 564-2855**

Tad's Boat & RV Storage

**Covered & Uncovered
24 ft. To 36 ft. Covered
ANY SIZE Uncovered
24-Hour Access
Gate Code Entry**



Quail Club News

Carole Duran, Club Reporter

We hope that everyone had a very **Blessed Merry Christmas** and a very **Happy New Year**.

We are starting the year off with a very interesting program. On January 16th, the program will be "The Tree Nut Farm" and the speaker is Al Barbarich from a local farm. The **MEMBER CHALLENGE** will be to tell about something special that happened at Christmas.

On February 20th, the program will be "Scuba Diving Adventures" by Don and Carol Jarvis. The **MEMBER CHALLENGE** for that meeting is for members to bring unwrapped Baby Shower gifts for Military Families.

You don't have to be a member of the Meadview Quail Club to attend Quail meetings. Hope to see you there.



Enjoy The View



Meadview Lake Motel

30205 Escalante Blvd
Meadview AZ
928-564-2343

MOHAVE RANCHO LUMBER



GENERAL CONTRACTOR
Specializing in: Water & Septic Systems
Manufactured Home Site Preparation

FRANK GERACI

ROC: 101886 * 149886 * 217244 * 252832

14500 N. Pierce Ferry Road
Dolan Springs, AZ 86441

(928) 767-3339
Fax: (928) 767-6245

For Sale by Owner

Undeveloped lot located in the
foothills area of Meadview, AZ.

Lot # 19-0063 Tract # 1198

1410 E. Pueblo Dr.

Lot Size Dimensions 130'/260'

**This lot has a gentle downhill slope
with a beautiful view of the Grand
Wash Bluffs of the Grand Canyon.
Utilities are available at the street.**

**\$15,000 gets you a home site with
an awesome view. If interested,
please call 360-877-6381 and leave a
message.**

FOR SALE BY OWNER

**Two undeveloped lots located in Meadview,
AZ**

**These two lots together total .57 acres and
can be sold together or separately.**

**LOT # 16-0006 - 45 E. Hualapai Creek Rd.
Lot dimensions: 135' L x 98' W (13,230 sq. ft.)**

**LOT # 16-0007 - 35 E. Hualapai Creek Rd.
Lot dimensions: 120' L x 100' W (12,000 sq.
ft.)**

**These lots have great views of Grand Wash
Bluffs with utilities available at the street.**

Lot # 16-0006: \$7,500

Lot # 16-0007: \$6,000

BOTH LOTS: \$12,000

Our website at

mca-az.com

is now mobile phone friendly!

**NOW
AVAILABLE!**

MEADVIEW MONITOR DELIVERED
DIRECTLY TO YOUR EMAIL INBOX.

IF YOU WANT THE MONITOR DELIVERED
VIA EMAIL, PLEASE SEND YOUR REQUEST
TO:

mca@citlink.net

WE 'LL BE HAPPY TO ADD YOUR NAME
TO OUR MONITOR E-MAILING LIST!

FRIENDS OF THE ARIZONA JOSHUA TREE FOREST

By Pam Steffen



Hello from the Friends of Arizona Joshua Tree Forest! We have an exciting volunteer project coming up in a few weeks! We have been working with the USGS to establish permanent study plots in our magnificent Joshua Tree Forest. These plots need to be defined and organized so that data can be collected on a regular basis for the ongoing Joshua Tree Genome study. We need 12 volunteers for one day to help with this process by measuring, walking the plot lines, and writing down data collected. The specific date will be determined but will be in late January or early February. If you are interested, please contact us at friendsofjoshuatreeforest@hotmail.com and we will give you more

information. It's a great opportunity to be in the forest and take part in this very important study. Please consider joining us!

Come join us! Annual membership fees- Single/Couple \$25, Family \$45, Business \$30. For more information check out our website at: www.joshuatreeforest.org

MCA Payment and Billing Options

Payment Options:

Bill Pay through your bank. Automatic payment sent by the member from their bank account and a check will be made out and mailed to the MCA from your bank.

Credit Card Payments by calling or coming into the office.

Check, Money Order or Cashier's Check either mailed or handed to the office staff. Most property owners are already utilizing this option. The change is that the checks are now electronically deposited within a week of receiving them.

Cash payments are always welcome. Bring cash payments to the office. Please do not mail cash payments.

NEW! PayPal payments are now accepted at our website: mca-az.com Click on *Make A Payment* at the home page.

Billing Options:

E-Billing— Need to provide the office with your e-mail address.

1. You can fill out the Update form on the last page of this Monitor issue and mail it to us.
2. You can send us an e-mail. In the subject line write ***E-Billing Request***. In the body provide all of your information including your preferred E-Billing address. ***Please provide either your lot # or the Assessor's Parcel #.***
3. When the next billing cycle starts you will receive an E-Bill for every lot owned instead of a paper bill via snail mail.

Snail Mail no need to do anything to request this option as it is our default option.

**MANNA FOOD DISTRIBUTION
IS ON THE FIRST THURSDAY OF
THE MONTH BETWEEN**

8-11 A.M.

AT

330 E. MEADVIEW BLVD.

(Meadview Plaza next to View Video)

LOT FOR SALE

MCA OWNED

All utilities available.

Corner lot.

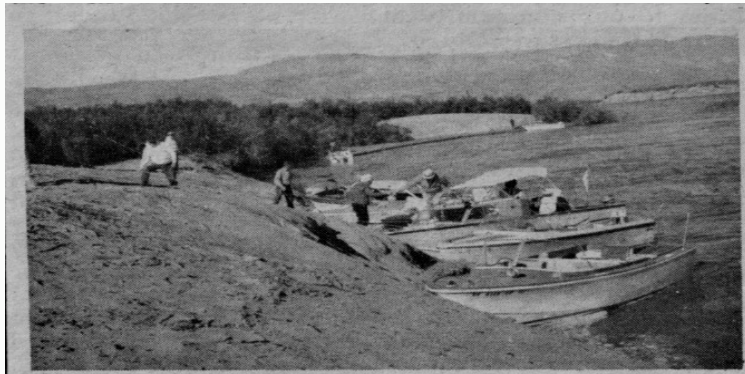
1060 E Bradley Bay Drive

Listed at \$10,000

Please direct all inquiries to
Kingman Premier Properties of
Meadview

928-564-2222

BLAST FROM THE PAST



STOPPING AT PIERCE FERRY, A FAVORITE SPOT FOR A COFFEE BREAK ON THE RIVER RUNS.

This season's final Granite Gorge Cruise, sponsored by the Meadview Adventurer's Club, was one of the most enjoyable outings the Club has sponsored to date, weather-wise, water wise and group size, 20 boats. Friday morning, November 24th, a beautiful balmy, Fall day, saw spirits high, with lots of gaiety, as we cast off from South Cove, heading for Iceberg Canyon and the Colorado River.

Jim Gale and I were the only ones that had any qualms. You see, on Nov. 22nd, two days prior to the actual cruise, Jim in his boat, with Bob Genung as his crew, and yours truly, in a 16 ft. craft, with Wilber Ast as my crew, took off up river to check the sand bars. Any of you boaters that have participated in a Colorado River Cruise, know that the river changes her course from time to time, due to the sand conditions.

The sight that greeted us as we passed Boundry Point and passed through the Narrows into Bradley Bay, was one of awe. On the South shore of the bay a reef protrudes out into the lake for quite a distance. Years past the Park Service Rangers had placed a reef marker to warn boaters of this danger. This day that marker stood well above the water level with tons of sand surrounding it. The level of Lake Mead at this time was a few feet above 1100 foot elevation and this accounted for the expanse of sand showing in Bradley Bay. For some reason the water flow in the Colorado was very low on this particular day and I have never, at any other time, seen so much river bottom in the form of sand.

We checked the river course from the Lake up river to Flour Sack Rapid, just above the Bat Mine, and the channel was well defined. There were two places where the depth of the water was a scant 3 feet. I should like to add at this time, that the river channel changes are caused by the silt banks sloughing off into the river current. One witnesses these sloughs while on any cruise up river. In many cases the silt banks are as high as 30 feet above the river and the wind and water play on these nearly perpendicular banks until they can no longer support themselves. It is some sight to see hundreds of feet of such a bank dropping tons of sand into the swift current, causing huge waves to form. This process is adding to the width of the river and at some points making it hard to find the negotiable channel. It's quite a surprise to find your boat in ankle deep water.

Meanwhile, back to the day of the actual cruise. It was a beautiful take off and as always, the sight of all the boats following, each creating its own wake, was a beautiful sight to see. This scene was soon interrupted however, when our lead boat started acting up and we slowed down to a crawl. I

COLORADO RIVER CRUISE AGAIN THRILLS BOATERS

From Meadview Monitor January/February 1968 by Hal Brown

guess everyone wondered what on earth was taking place, it was certainly too soon for a coffee break. Before long our craft stopped completely and mechanical repairs were in order. A gas line restriction had caused the trouble. When this was corrected off we headed for the river, and to our complete surprise and relief, the river level was up a good four feet above the Nov. 22nd level and our group sailed right along.

There was much evidence of ducks and geese as this was nearing the time of the year for migration flights South.

After the Pierce Ferry coffee break we proceeded up river to enter the Lower Granite Gorge, a sight that will always thrill me, however often I make such a cruise.

As we caught sight of the steel towers high above, on the south canyon rim, that announces the bat Cave location, we noticed movement up ahead. As we came closer, we could make out canoes lashed together in twos and threes with small outboard motors pushing them along at slow speed. (The river current at this point runs between 4 and 5 miles per hour.) We all slowed down as we passed by. I might add this didn't help much. A loaded canoe has about 6 inches of freeboard and our boats, even at slow speed, kick up a whopping big wake. Well, we found out later that the cane folks weren't waving at us, they were trying to slow us down even more.

We stopped on the north bank of the river on a narrow beach, below the Bat Cave, for lunch. While we ere eating, the canoes caught up and beached a short distance up river for their lunch stop. As they passed, several of us made pleasant comments, only to receive cold stares. One group of these canoeists came in close and a member stood up to his full height and greeted us with, "you bunch of idiots, don't you know enough to slow down when you pass a canoe?" They weren't all unhappy, however, for later I had a very nice visit with their leader and laughs were in order. In fact, I'm going to join them on a down river run sometime in the near future. "I'll be in a rubber raft with a Mae West for company.)

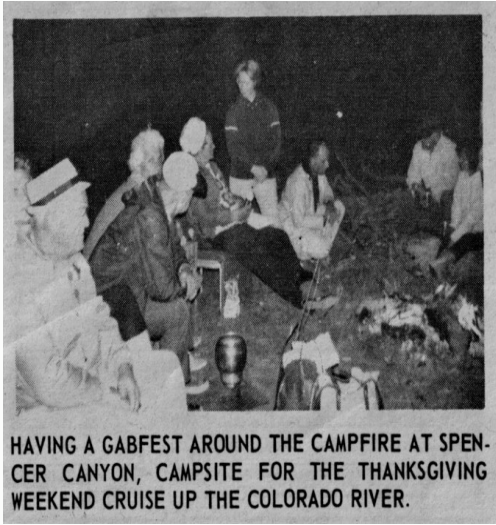
Due to the rise in the river level we had very little trouble with sand bars until we reached Reference Point Rapid. At this point the river leaves the much narrower upper canyon and the water spreads out over a wide area at the base of a huge towering bluff. The river also makes a decided turn and the combination of wide river plus the turn usually causes some one to bar up here, and usually it's me, only this time I was in a smaller boat than on previous runs so sailed right on through. Not so, Wilber Ast, in his 18' cabin cruiser. He later swore there was no deep channel at that point because he had plowed sand from one bank to the other. I don't think that was very sporting of him because if he had come straight through in the heavy boat he could have made a channel for everybody. As I mentioned before, the river narrows above Reference Point and we could all relax and enjoy the changing colors of the high canyon walls from here to Bridge City.

Due to there being fewer boats than on previous trips it was possible to make a stop at Separation Canyon, as we did at the Bat Caves. Here we viewed th plaque placed there in memory of three of Powell's men. They had left this group at this point only to be killed by Indians after hiking out to the Shivwits Plateau, on the rim of the Canyon.

Continued on Page 10

COLORADO RIVER CRUISE AGAIN THRILLS BOATERS

Continued From Page 9



There was much swift water flowing over Separation Rapid and this created quite a problem, as the area large enough to land boats at is immediately above the rapid. As each boat landed, the crew turned to watch the next boat run the swift water. This was really a thrill to see as each boat seemed to pause as it entered the smooth water at the head of the rapid, actually where the water runs the swiftest. One boat, a fourteen footer owned by Jim Dyar, stalled out just as he was turning out of the swift water in preparation to landing. All of us watched helplessly as the fast current carried the Dyars boat back down through that rough water. A boat with an outboard successfully pulled them back up

and just as they leveled off and hit the swiftest part, the rope broke and down they went, backwards through the rapid again. Talk about nervous people watching from the bank. Poor Jim disappeared down river trying to start his motor.

J.D. Truli and another pilot cast off in J.D.'s new Chrysler boat and soon came back upstream with the Dyars in tow. When we investigated, it was found that the fly wheel on Jim's boat had stripped the shaft key, hence no timing to fire.

Several boats continued up river to the first big rapid before returning downstream to Spencer Canyon, to the overnight campground. As always, lots of fun and levity was had around the campfire that night, before retiring. This camp area is in a ruggedly beautiful setting, the only noise one hears is the faint rustle of running water and an occasional bray of a wild burro. This can bring one to attention if he is close by.

Morning saw three boats high and dry. The water nearly always drops during the night and on this a.m. it was down nearly 3 feet. After a delicious breakfast camp was broken up and by 10 o'clock all were headed down stream

There were no major bar ups on the return run as our timing was just right. The boats were gaining on the runoff crest and this gave us more water as we proceeded down river.

While we were stopped at Pierce Ferry, several boats in the 18' to 24' class proceeded up stream. This flotilla was part of a southern California Power Squadron that were having a weekend campout at Sandy Point. Would like to know how far they got in those big boats.

The arrival at the South Cove launching ramp ended another wonderful two day adventurous outing; topped off by the Sportsman's Barbeque on the mesa overlooking Lake Mead.

To further top off this Thanksgiving weekend, a ranch breakfast was held on this same mesa on Sunday morning. Not to be outdone weather-wise, by the two previous days, the morning dawned another clear, beautiful, warm day. Imagine, sitting down to an outdoor breakfast in your shirt sleeves on November 26th.

On April 12, 1968, another Granite Gorge Cruise is planned, so if you have missed the previous trips plan to take this one in.

A FEW WORDS FROM SANDY -

Life's journey is soon taking me to new places of adventure. I want to thank the Board, my co-workers and all the wonderful MCA members who have enriched my life tremendously these past two years. Working here has been an absolute pleasure for me. I will miss you all, and I'll always have a place in my heart for each one of you.

Please stop by the office and introduce yourself to Shannon Fry. She'll be replacing my position in the office when I leave.

Welcome, Shannon!

VFW 11014 Meadview News January/February 2018

VFW Activities January-February, 2018

Welcome to the VFW Post 11014, here in Meadview, AZ. Our mission is to serve Veterans and their families. We are so amazed and grateful to have such community support. Thank you. The Veterans Day flag-raising and activities were such a tremendous event, because of you. For all the Veterans who participated in the Veterans Photo Shoot, please stop by and pick up your copy of the Mohave Valley Daily News, Veterans Day insert. We are so proud to have shared 109 photos, of our community Veterans, in this issue. Thank you.

At the moment, January is seeming to give us an activity break before tackling the rest of the year. We will continue to hold the weekly activities –electronic darts on Monday, Taco Tuesday, burger Wednesday, Wii Bowling Thursday, Fish Friday, shuffleboard Saturday, pool tournament Sunday, and second Sunday Spaghetti Dinners. The third Saturday of each month is a Karaoke evening. All activities are open to the public to participate. All proceeds from dinners go directly to supporting Veteran Programs, in our community and beyond. Remember, we always have scholarship information for youth, and for Veterans wishing to continue their education.

In February, we will have a Valentine's themed Karaoke evening on the 17th. The next Boulder City, NV VA Home Bingo session will take place on February 21st. Volunteers are always welcome and appreciated. This is to assist the residents at the VA Home in several games of Bingo and add to the fun.

In March, the next Stand Down will take place. Stand Down is a community event centered around helping Homeless Veterans back on their feet. Donations of gently used clothing, new socks, sundries, sleeping mats, time, are greatly appreciated. The Stand Down event will take place in Bullhead City.

So many issues are coming before Congress on Veterans Health Care. If you would like to be an active voice to advocate for our Veterans, please stop in or visit VFW Action Corps Weekly online.

Wishing you a wonderful and blessed New Year,
VFW 11014 and Auxiliary

IMPORTANT NOTICE

NEW RESIDENTS

Please help our emergency responders identify your property by posting your address in clear view. GPS is not always accurate in our area.

Their quick response is for your own benefit.



**Extra, Extra
Read All About It!**

Find the latest Membership Meeting Minutes
on our website at mca-az.com located on the
activities page.

VFW GOOD EATS!

- **SECOND SUNDAY OF THE MONTH - SPAGHETTI FEED 5-7 P.M.**
- **TACO TUESDAYS 5-7 P.M.**
- **HAMBURGER WEDNESDAYS 5-7 P.M.**
- **FISH FRIDAYS 5-7 P.M.**
-

**SERVED TO THE PUBLIC
COME JOIN US!**

MEADVIEW COMMUNITY CHURCH

"A light at the Canyon's End"

(928) 564-2411

Service Schedule:

Sunday

9:30 AM Adult Class
10:45 AM Morning Praise and Worship

Wednesday

6:30 PM Bible Study

Friday

7:00 PM Choir practice

Communion is served the first Sunday of the month

Our Men's Breakfast is the second Tuesday of each month at 8:00 AM

Women's Bible Study is on the first and third Monday each month at 9:30 AM

Red, White and Blue quilters meet at 9:00 AM the third and fourth Thursday of each month

The Christmas Ladies Luncheon is Saturday, December 2nd at 11:30 AM

Tune in to radio station KVIP at 90.9 FM for inspirational music and messages

Follow us on Facebook at **Meadview Community Church**

Pastor John Mulvihill

(301) 730-0727

Come and worship with us!

We would love to receive your photos of Meadview and the surrounding area. Those pics just might find a place in future *Meadview Monitor* publications and/or our website for other members to enjoy viewing.

Please submit photographs to our e-mail address: mca@citlink.net.

AMC **FOAM ROOFING**
FOAM ROOFING
FLAT ROOF SPECIALIST
MOBILE HOMES
Can Be Applied On Most Roofs
RECOATING & REPAIRS OF
EXISTING FOAM ROOFS
AZ ROC#255400 • Commercial & Residential
928.234.2020
760.777.3553
SERVING LAKE HAVASU, BULLHEAD CITY, FORT MOHAVE,
TOPOCK, GOLDEN VALLEY, KINGMAN & NEEDLES

MEADVIEW BAPTIST CHURCH



Sunday: 9:45 a.m. - Sunday School
11:00 a.m. - Worship Service

(Nursery is available during church services).

Tuesday: 2:00 p.m. - Cottage Prayer at Ann Woods Home, 200 Coral Isle Dr.

Thursday: 3:00 p.m. - Meal & Bible Study/ Prayer Meeting in the Worship Center.

Saturday: 9:00 a.m. - Men's Breakfast First Saturday of each month.

928-564-2341

meadviewbaptist.com

TOPS CLUB AZ # 0531.

"TAKE OFF POUNDS SENCIBLY" !!



We are a local Support group
We meet Thurs. at the Dolan Spr. Chamber
9am to 11 am

Dolan Springs 928-530-7510 Mary
Meadview 928-546-2522 Deb
Kingman 928-565-1877 Pam

January 2018

Sun	Mon	Tue	Wed	Thu	Fri	Sat
	1 HAPPY NEW YEAR!	2 Bingo 6-9 pm	3 Sit & Be Fit 9-10:30 am	4 COM 10-12 am	5 Sit & Be Fit 9-10:30 am Bingo 1-4:30 pm	6 Ridgeriders 9-10:30 am
7	8 Sit & Be Fit 9-10:30 am	9 Busy Hands Social Club 8-4 Bingo 6-9 pm	10 Sit & Be Fit 9-10:30 am Explorers 6:30-8:30 pm	11 Red Hatters 1-3:30 pm	12 Sit & Be Fit 9-10:30 am Bingo 1-4:30 pm	13 <u>MCA MEMBERSHIP MEETING 9:00 AM</u>
14	15 Sit & Be Fit 9-10:30 am LMRFD 1:30-4 pm	16 Quail 10-12 Bingo 6-9 pm	17 Sit & Be Fit 9-10:30 am	18	19 Sit & Be Fit 9-10:30 am Bingo 1-4:30 pm	20
21	22 Sit & Be Fit 9-10:30 am	23 Bingo 6-9 pm	24 Sit & Be Fit 9-10:30 am	25	26 Sit & Be Fit 9-10:30 am Bingo 1-4:30 pm	27
28	29 Sit & Be Fit 9-10:30 am	30 Bingo 6-9 pm	31 Sit & Be Fit 9-10:30 am			

February 2018

Sun	Mon	Tue	Wed	Thu	Fri	Sat
				1	2 Sit & Be Fit 9-10:30 am Bingo 1-4:30 pm	3 Ridgeriders 9-10:30 am
4	5 Sit & Be Fit 9-10:30 am	6 Bingo 6-9 pm	7 Sit & Be Fit 9-10:30 am	8 COM 10-12 am	9 Sit & Be Fit 9-10:30 am Bingo 1-4:30 pm	10 <u>MCA MEMBERSHIP MEETING 9:00 AM</u>
11	12 Sit & Be Fit 9-10:30 am	13 Quail 10-12 Bingo 6-9 pm	14 Sit & Be Fit 9-10:30 am Explorers 6:30-8:30 pm	15 Red Hatters 1-3:30 pm	16 Sit & Be Fit 9-10:30 am Bingo 1-4:30 pm	17
18	19 Sit & Be Fit 9-10:30 am LMRFD 1:30-4 pm	20 Bingo 6-9 pm	21 Sit & Be Fit 9-10:30 am	22	23 Sit & Be Fit 9-10:30 am Bingo 1-4:30 pm	24
25	26 Sit & Be Fit 9-10:30 am	27 Bingo 6-9 pm	28 Sit & Be Fit 9-10:30 am	29	30 Sit & Be Fit 9-10:30 am Bingo 1-4:30 pm	

Please do not send your debit/credit card information or cash through snail mail. Also, please do not provide us with your debit/credit card information through an e-mail. These are not secure places for such important and sensitive information.

_____ E-mail Address: _____

_____ Phone #: _____ Alt. Phone #: _____

_____ City: _____ State: _____ Zip Code: _____

_____ Address: _____

_____ Care of (if you are caring for the owner's property): _____

_____ Property Owner Name: _____

Information Update/Change form ☐ I want to receive E-Billing.

Meadview Monitor
Meadview Civic Association, Inc.
247 E. Meadview Blvd.
P.O. Box 217
Meadview, AZ 86444

Phone: 928-564-2313
Fax: 928-564-2520
E-mail: mca@citlink.net
Website: mca-az.com

