

Meadview Monitor

January/February 2017



PHOTO COURTESY OF DORIS LASH

INSIDE THIS ISSUE

Disclaimer.....	2
Board of Governors/Employees.....	2
Open Letter to Our Members	3
Christmas Carolers!.....	4
Billing & Payments Options.....	4
Crossword Puzzle.....	5
Quail Club News.....	5
LMRFD Review.....	6
Blast From The Past.....	6
Friends of the Arizona Joshua Tree Forest.....	7
C.O.M. News.....	8
Explorers/Over The Hill Hikers.....	9
Crossword Answer Key.....	9
Blast From The Past.....	10
Church News.....	10
Nov./Dec. Calendar.....	11
Information Update/Change and E-Billing Request.....	12

SPECIAL POINTS OF INTEREST

NEW! Now accepting payments through Pay Pal.....4



BOARD OF GOVERNORS

- Don Jarvis.....President*
- Dennis Kehoe...Vice President*
- Ray Stone...1st Vice President*
- Steve Berg...2nd Vice President*
- Neil Baker...3rd Vice President*
- Joy Luke...Treasurer*
- Elizabeth Buckingham...Co Treasurer*
- Lynn Wright Murray...Secretary*

MCA EMPLOYEES

- Edie Needham....Member Services & Contributing Editor*
- Sandy Henderson...Member Services & Contributing Editor*
- Darrell Young...Maintenance*
- Larry Minard...Maintenance & Security*
- Bob Reynolds...Security*
- Richard (Woody) Woods...Security*

DISCLAIMER:

The Meadview Monitor is an official publication of the Meadview Civic Association (MCA, a membership association) P.O. Box 217, Meadview, AZ 86444. (928) 564-2313, Fax (928) 564-2520, or email: mca@citlink.net (please put "Meadview Monitor" in the subject line.) Notice in the Meadview Monitor is official notice of any and all proceedings of the MCA.

Submissions become the property of The Meadview Monitor. We will not publish any letters or ads that are unsuitable for this newsletter or for which the MCA be held liable. The Board of Governors will make the final decisions on those letters, ads and/or articles that are printed. All articles must have a by-line. All letters must have a name and a traceable address.

“Meet & Play At The MCA”

Facility Hours

Open from 8 a.m.—10 p.m.

7 days a week

Office Hours

Tuesday—Saturday

HAPPY NEW YEAR!

FROM THE STAFF AND BOARD AT MEADVIEW CIVIC ASSOCIATION

A note of thanks -

As some of you who have used our facility in the recent past may know, we have been experiencing recurring issues with slow drains in our kitchen sinks.

We finally have the problem resolved and we want to thank Jack Newell for volunteering his time to help Darrell tackle the problem. Thank you Jack! After much perseverance and a little “elbow grease” the two men got the sinks fixed and they are draining perfectly now.

We truly appreciate your help!

OPEN LETTER TO OUR MEMBERS

OPEN LETTER TO OUR MEMBERS

JANUARY – FEBRUARY 2017

We start our new year with a couple of new Board Members. The Board has lost one Member. Our Vice President, Lori Roll, has resigned due to medical reasons.

Elizabeth Buckingham and Dennis Kehoe have generously agreed to volunteer their services to keep the Board of Governors operating smoothly until our May Election. Those interim positions will expire as of the May 27th Election. We will have three open positions to fill the new terms. We are asking anyone wishing to volunteer for this new Board of Governors to submit their name and bio prior to February 15th.

The February 15th deadline is necessary so their information can be included in the March/April Monitor for notification to our membership.

Hopefully, both Elizabeth and Dennis will agree to rerun for the Board by placing their names on the upcoming May ballot.

The owner of the property located at 1198 Meadview Foothills, Lot 41, has deeded his property back to the MCA for resale. The list price is \$10,000. The proceeds of the sale of this property will go into the Meadview Civic Association's funds for MCA use. Anyone interested in purchasing this property may contact our office.

Our 2017 Assessment Invoices have been mailed out and will be delinquent in March. Members may take advantage of our new payment options. For your easy reference, those options are outlined on the following page in this Monitor. As you can see, a member can pay by cash, check, credit card or debit card. Payment can be made by a telephone call, by mail, or just by stopping by the office. The office is open each week, from Tuesday through Saturday. Office hours are from 9:00 a.m. to 4:00 p.m.

Should you wish to have your invoice emailed to you in the future, our office staff now has the ability to send it to your email address. Call the office, so we can include that information in your file. **As a side note:** Our office also has the ability to email an Absentee Ballot for those wishing to vote Absentee.

One change in our Policies is that we are increasing our "Yearly Social Membership Fees" from \$50 to \$75. The increase does not affect the current Social Members; only new applicants. Current Social Members will remain at the \$50 fee, unless there is a "break" in their membership.

We thank you for allowing us to serve you during the 2016 year. We look forward to serving you through the 2017 year.

Meadview Civic Association,
Board of Governors.

MCA Payment and Billing Options

Payment Options:

Bill Pay through your bank. Automatic payment sent by the member from their bank account and a check will be made out and mailed to the MCA from your bank.

Credit Card Payments by calling or coming into the office.

Check, Money Order or Cashier's Check either mailed or handed to the office staff. Most property owners are already utilizing this option. The change is that the checks are now electronically deposited within a week of receiving them.

Cash payments are always welcome. Bring cash payments to the office. Please do not mail cash payments.

NEW! PayPal payments are now accepted at our website:

mca-az.com Click on *Make A Payment* at the home page.

Billing Options:

E-Billing— Need to provide the office with your e-mail address.

1. You can fill out the Update form on the last page of this Monitor issue and mail it to us.
2. You can send us an e-mail. In the subject line write **E-Billing Request**. In the body provide all of your information including your preferred E-Billing address. **Please provide either your lot # or the Assessor's Parcel #.**
3. When the next billing cycle starts you will receive an E-Bill for every lot owned instead of a paper bill via snail mail.

CHRISTMAS CAROLERS ARRIVE!

Residents of Meadview were treated to the jubilant voices of Mt. Tipton's elementary school students after they arrived at the MCA parking lot on three busloads from Dolan Springs to sing Christmas carols.

Over one hundred students dressed in bright green and red tee shirts and Santa hats sang for us in the auditorium. They did a great job and the audience thoroughly enjoyed the performance and offered rounds of applause after each song was sung.



A few happy carolers

We offer a big "thank you" to Mt. Tipton's school staff and students for bringing their contagious joy and smiles to Meadview at the MCA auditorium.



The entire school and staff except for just a few showed up to perform



The audience enjoyed hearing many familiar Christmas tunes

Photos by Edie Needham

Quail Club News

On January 17th, the program will be Desert Wildflowers by Suzann Newell. The member challenge will be to show and tell about a Christmas gift received.

On February 21st, the program will be the Diana's Faith House (Women's Shelter) by Lisa Beuchamp. The challenge for that meeting is for members to bring unwrapped Baby Shower gifts for Military Families.

You don't have to be a member of the Meadview Quail Club to attend Quail meetings.

Hope to see you there.



LOT FOR SALE

MCA OWNED

All utilities available. Corner lot.

1060 E Bradley Bay Drive

Listed at \$10,000

**Please direct all inquiries to
Kingman Premier Properties
of Meadview**

928-564-2222

ADVERTISEMENT RATES

This is a Bi-Monthly Publication.

Business Card - \$6 per issue or \$36 per year.

1/4 Page - \$10 per issue or \$60 per year.

Half Page - \$20 per issue or \$120 per year.

Full Page - \$40 per issue or \$240 per year.

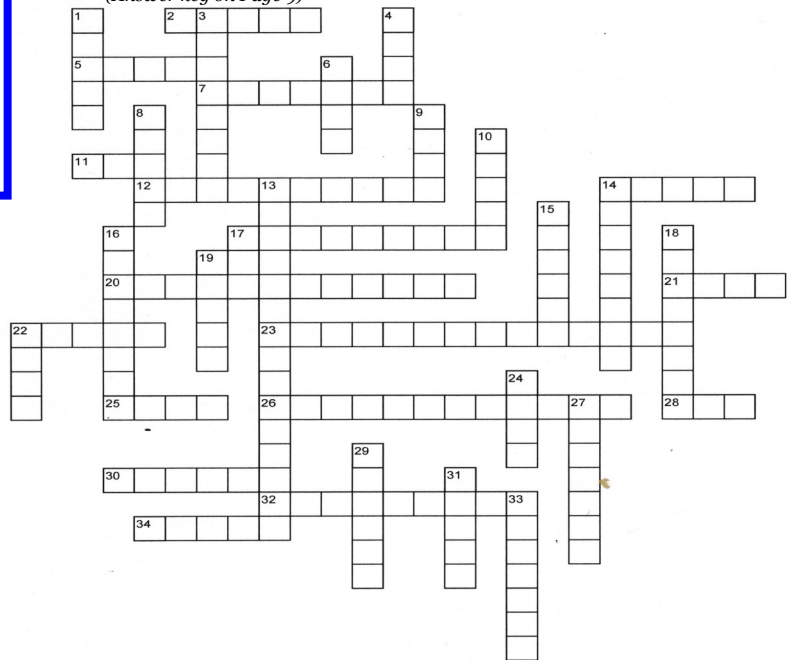
Please make check payable to:
Meadview Civic Association or MCA
P.O. Box 217
Meadview, AZ 86444

NOTE:

- * All ads must be paid in advance.
- * The MCA reserves the right to edit or refuse ads or submissions.
- * Sorry, no refunds for cancellations.

CROSSWORD PUZZLE

All words are located in the article titled ***Blast From The Past***—
(Answer key on Page 9)



Across

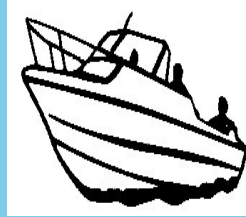
- 2 To express mirth
- 5 Rising or falling sharply
- 7 Investigate one's surroundings
- 11 Great enjoyment
- 12 A heavy limb? (place)
- 14 Midday meal
- 17 The opposite of easy
- 20 Light snacks for the hungry
- 21 Take a Sunday drive?
- 22 H2O
- 23 Bighorn's noggin on a Key? (place)
- 25 Taking very little effort
- 26 An older couple
- 28 Finish
- 30 Used to take a photo
- 32 Directional water spot? (place)
- 34 A sandy shore

Down

- 1 A short stopover
- 3 Hungering for food
- 4 A chronological count
- 6 A landing pad for boats
- 8 A type of water craft
- 9 A great water activity
- 10 The sound of silence
- 13 Double the cleanliness? (place)
- 14 A basin full of a fermented drink? (place)
- 15 Amusing behavior (plural)
- 16 Cooking over the flame
- 18 Garden of Eden
- 19 A collective crowd
- 22 It was a breeze!
- 24 annual time period
- 27 An awkward stage of life?
- 29 This is the great outdoors!
- 31 Travelers resting place
- 33 A repeating water inlet? (place)

Tad's Auto & Marine Service & Repair

ASE Certified Mechanic
A/C Tune ups
Brakes
Suspension Computer Diagnostics
Tire Repair



Tad's Boat & RV Storage
Covered & Uncovered
24 ft. To 36 ft. Covered
ANY SIZE Uncovered
24-Hour Access
Gate Code Entry

27070 N Pierce Ferry Road
Meadview, AZ 86444
(928) 564-2855

Lake Mohave Ranchos Fire District Review

By Robert Porzio

Thanks to the Meadview Community. In the past several months we have donated over \$1,200.00 to our Fire Department through monetary donations and aluminum cans. The money will be used for the AFDA Conference Registration this January in Laughlin.

The Conference will be holding classes that are mandated by the State of Arizona for all new Board Members and Fire Chiefs. The curriculum is as follows:

1. Open Meeting Laws
2. Financial Management
3. Ethics/Fiduciary Responsibilities
4. Governance/Roles and Responsibility



The new Board and Fire Chief are working hard and doing a good job to keep our District within budget.

The Chief and Board are seeking bids for a new ambulance. The ambulances we have now are nickel and diming us to death. They feel that in the long run a new or near new ambulance will be our best bet. Our calls are down almost 100 from 2015. Good job staying in good health.

The next Board meeting will be Monday, January 16th at 1:30 p.m. in Dolan Springs at the Chamber of Commerce. The meetings are held the 3rd Monday at 1:30 p.m. and alternate between Dolan Springs at the Chamber of Commerce and in Meadview at the MCA.

BLAST FROM THE PAST

Boaters Enjoyed South Cove to Overton Cruise—July 1967

By Jackie Brown

The Meadview Adventurers' Club has made it its aim to sponsor outings of a nature that all ages can enjoy. It is really pleasing when youth joins up with the grownups and everyone enjoys our events.

The June 24, 1967 boat cruise was designed for families who enjoy boating, swimming and sunning and the cruise from South Cove to Overton and return, allowed all three activities.

For three days prior to this date we were not sure we would make the cruise as the wind in our area was really blowing, nice to cool the temperature, but this means rough water. Luck was with us though, and the scheduled date brought forth a beautiful day with the water as smooth and quiet as anyone could ask for.

The boats left the South Cove launching ramp a little after 10:00 a.m., Arizona time, and set traveling speed at 25 miles per hour. This brought us to Twin Springs Wash, where there is a nice sandy beach, at approximately 11:30 a.m. It didn't take anyone very long to pile out of the boats and hit the water and enjoy a nice refreshing swim. In due time we did have lunch and a "get acquainted" session, then back in the water again.

One couple, the Hap Slaughters, from Kingman, had with them their two teenage grandsons, Hugh and Lee Andrews. Lee and Hugh are from Maine and are here on a two months visit with their grandparents.

Of all of us, these two young'uns seemed to have had the most fun, although there were two couples from California who appeared to be enjoying themselves, also. Jim and Janice Johnson along with Duke and Arlene Lewis manage to liven things up with their antics, giving all of us a good laugh, but we never seemed to have the camera ready at the right time. They plan to go on the September 2nd Granite Gorge Cruise so maybe we'll catch them up to something, yet.

A most interesting twosome was a father and daughter team, Wilbur and Susan Scott from Placentia, California. They had been camping out on Lake Mead for several days and enjoying the water in their Jetstream boat. An interesting sidelight however, is the fact that they had brought along a canoe which they carried in their boat. With the canoe they were able to explore the shorelines with greater ease.

(continued on Page 10)

FRIENDS OF THE ARIZONA JOSHUA TREE FOREST



Friends of the Arizona Joshua Tree Forest wish all our friends, neighbors, members and supporters a very Happy Holiday Season and an outstanding New Year.

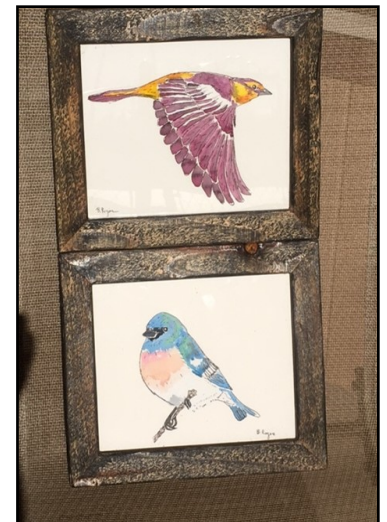


Don't forget that a Friends membership is a lasting and worthy gift to give friends and loved ones this holiday season.

Friends of the AZ Joshua Tree Forest are holding their annual fund-raising raffle which supports the efforts of the group to protect our magnificent forest. 2 signed and framed original watercolors of birds by contemporary artist Betsy Rogers will be raffled. Betsy is a friend of Sharon Baur, and an avid birder and regular volunteer for bird banding on remote islands in Alaska. She is also an educator and volunteers her time

teaching at science camps in the Aleutian Islands. She

Tickets are \$1 each or 6 tickets for \$5. The paintings are available to see and tickets can be purchased from any board member at COM Meetings.



Come join us! Annual membership fees- Single/Couple \$25, Family \$45, Business \$30. For more information check out our website at: www.joshuatreeforest.org



AMC SPRAY FOAM ROOFING
Recoating Contractor

Spray Foam Insulation
Discount

URETHANE-FOAM-ROOFING
FLAT ROOF SPECIALIST

Recoating & Repair
Elastomeric Roof Coating
New Construction ■ Flat Roofs
Insulation ■ Metal Buildings
Re-Roofing ■ Mobile Homes

Lic # 255400

928-234-2020
760-777-3533

COM MEETING REVIEW

By Suzann Newell

Over 80 residents attended this meeting, many to learn about the work upgrading Frontier Communications to improve our internet service. Jim Hansen presented the details on the work of putting in fiber optics that will push our area into the 21st century. He answered many questions from the audience, and left his business cards so people could email him for more information. Todd Davison, Manager of Mohave County's ERACE PRAISED THE AREA RESIDENTS FOR THEIR EFFORT IN THE November Large Community Cleanup. Over 35,000 pounds was hauled to the land fill. This included 237 tires and 12,312 of recyclables. Ninety-six vehicles came loaded with items and with good management the twenty-five volunteers were able to smoothly get this job done before noon. Davison thanked all who participated in this event.

Linda Boyden and the Red, White and Blue Quilters presented 25 lap quilts to Ken Cardenas to be given to the Boulder City Veteran Hospital. Ken expressed his acknowledgement for all the time and effort by this group and knows the Veterans will appreciate their patriotic gift. This group has made and distributed over 100 patriotic quilts to Vets.

Vern Farris and Jean Bishop, our District 4 Supervisor, spent time with the manage of the nut farm that will be planted on Gregg's Hideout Road. They discussed a method that could save many of the Joshua Trees that will be removed from that land. Contact Vern, 564-2224, to get all the needed information, but the idea is for Meadview residents to pick out a growing tree, tag it and when it is removed you will be called to come pick up your tree to be replanted in your yard.

The treasures report showed a balance of \$3,964.71 after COM's purchase of 'grabbers' for our Adopt the Highway groups. The present COM Board Members were then introduced to the three nominated members .

Gladys Burk moved that the eleven be accepted as our 20217 Board, Suzann Newell seconded the motion. The audience voted by voice and with no Nays, the Board was elected. Members are: Jan Beckett, Liz Buckingham, Rita Cardwell, Anthony Carter, Jay Dyke, Cindy Kehoe, Jonathan Kiser, Adrienne and Tom O'Keeffe and Carl and Karen Stacy.

MOHAVE RANCHO LUMBER



GENERAL CONTRACTOR
Specializing in: Water & Septic Systems
Manufactured Home Site Preparation

FRANK GERACI

ROC: 101886 * 149886 * 217244 * 252832

14500 N. Pierce Ferry Road
Dolan Springs, AZ 86441

(928) 767-3339
Fax: (928) 767-6245

We would love to receive photos of Meadview and the surrounding area to place on our website and in future *Meadview Monitor* publications.

Please submit photographs to our email address:

mca@citlink.net

We're looking forward to seeing those great snapshots!





UPCOMING EVENTS FOR 2017

- February 14th - Valentines Day Potluck Party
 - March 17th - St. Patrick's Day Green Beer Day
 - May 6th - Cinco de Mayo Weekend Bandy Party
 - May 27th - Memorial Day Weekend Band Party
 - June 30th, July 1st, July 4th - Weekend Band Party
 - August 19th - Summer DJ Party
 - September 2nd - Labor Day Band Party
 - October 28th - Halloween Costume Party
 - November 17th - Thanksgiving Pot Luck Dinner
 - December 9th - Christmas Sweater Karaoke Party
 - December 31st - New Years Eve Band Party
- 290 E. Meadview Blvd, Meadview, AZ 86444
(928) 564-2100



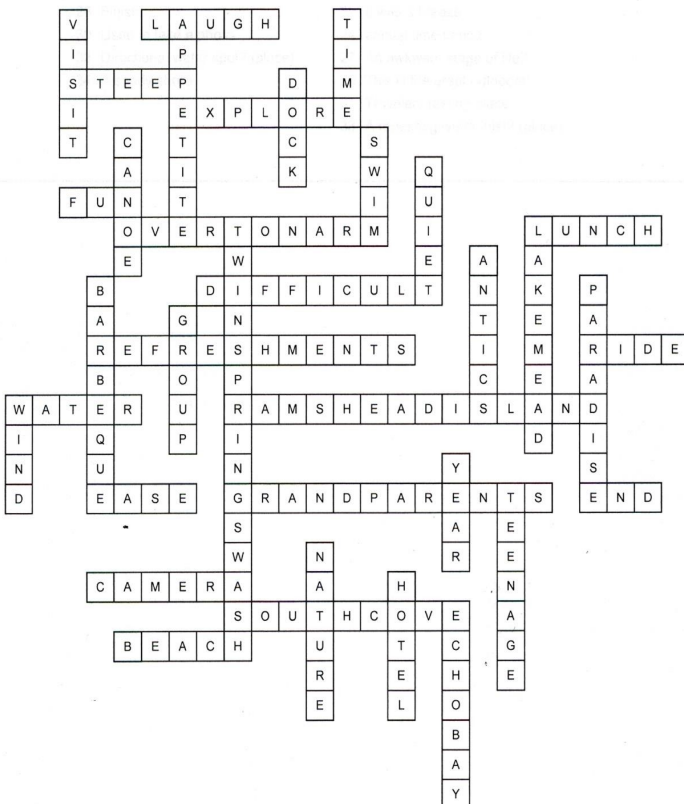
EXPLORERS/OVER the HILL HIKERS -bySuzannNewel

During November the weather kept us home and we did not get to the Gold King Mansion on the east side of Hualapai Mountain, but we did drive to within shouting distance of the McCracken Mining area on Alamo Road.

The last mile of that road was badly washed out and even the 4x4 jeeps would have had a rough go of it. We will try to come up from the south on that area because we really wanted to view that area. The trip to Mineral Park to visit the 1860 cemetery was cancelled due to bad weather, but thirteen hiked down the Basin Street Marble Canyon that feeds into Grapevine Wash. And our Annual Christmas Pot Luck Dinner was a blast.

We had 21 attending, and planned a hike and a 4x4 trip. The hike will be from the picnic area at South Cove around to Sandy Point. The trip will be into Chalcedony Wash which ends up about 20 miles below Hoover Dam on the Colorado River. Our regular meeting will be January II.

We will be planning other trips for that month and into February. All MCA members are invited to attend our meetings and go on the hikes and trips with the group. Someone has suggested a Death Valley camping trip for early Spring. The meetings are on the 2nd Wednesday of each month at 6:30 p.m.



MEADVIEW LAKE MOTEL

Where Lake Mead meets the Grand Canyon

30205 N. Escalante Blvd.
Meadview, AZ 86444
(928) 564-2343



Under new ownership:
Meadview Hospitality

- All Queen size beds
- Refrigerators
- Color TVs
- Newly Remodeled Units Large Rooms
- Air Conditioning



MEADVIEW COMMUNITY CHURCH

Our regular, weekly scheduled services are as follows:

Sunday: Sunday School at 9:30 a.m. and Morning Worship at 10:45 a.m. Communion is served the first Sunday of each month.

2nd Tuesday: Men's Breakfast at 8:00 a.m.

Wednesday: Bible Study & Prayer Service at 6:30 p.m. We are currently doing a video study related to the "Left Behind" series.

3rd & 4th

Thursdays: Red, White, & Blue Quilters at 9:00 a.m.

Friday: Choir practice at 6:45 p.m.

Our upcoming activities are:

- Men's Breakfast

Tune in to our Christian radio station, KVIP, at 90.9 on your FM dial.

We welcome you to come and worship with us at Meadview Community Church. We also invite you to follow us on Facebook at "Meadview Community Church".

Pastor John Mulvihill

928-564-2411

MEADVIEW BAPTIST CHURCH

Sunday: 9:45 a.m. - Sunday School
11:00 a.m. - Worship Service

Monday: 9:30 a.m. - Women's Bible Study, the 1st and 3rd Monday of each month in the Fellowship Hall

Tuesday: 2:00 p.m. - Cottage Prayer at Ann Woods Home, 200 Coral Isle Dr.

Wednesday: 3:00 p.m. - Men's Bible Study in the Classroom Bldg.

Thursday: 3:00 p.m. - Meal & Bible Study/Prayer Meeting in the Classroom Bldg.

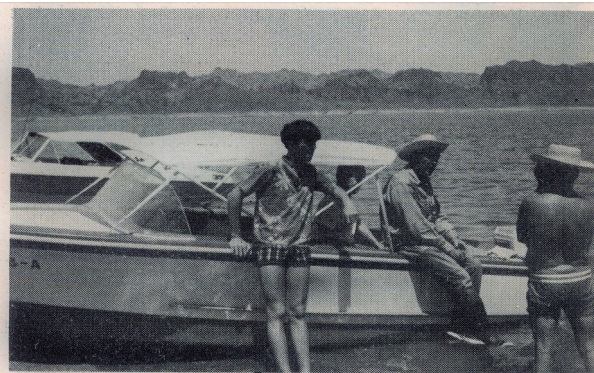
**Ladies Tea— Saturday, February 18th
11 a.m.—1:00 p.m.**

"It's a high-tea, a dress up occasion, wear your fancy hats, gloves and dresses. Food will be provided. Come expecting to have fun, smiles, and laughs!"

Pastor Jack Schoenthaler

928-564-2341

www.meadviewbaptist.com



LUNCH TIME AT TWIN SPRINGS WASH. L. TO R. HUGH ANDREWS, LENA AND HAP SLAUGHTER VISIT WITH DUKE LEWIS BETWEEN SWIMS.



GOOFING OFF. L. TO R. ARLINE LEWIS, HAL BROWN, DUKE LEWIS, JIM JOHNSON, WILBUR SCOTT AND JAN-ICE JOHNSON.

Blast From The Past—Boaters Enjoyed South Cove to Overton Cruise—July 1967

(Continued from page 6)

It was a bit difficult to tear ourselves away from the nice sandy beach at Twin Springs Wash but eventually we did and headed up the Overton Arm past Ramshead Island, to the Echo Bay Resort.

At the dock we were met by John Sparks, who nicely consented to drive the group up to the Echo Bay Resort installation. This is a beautiful hotel sitting high atop a hill, overlooking Echo Bay, and once inside, it seems like paradise. To walk the short, steep grade however, would have sapped our energy, so the ride from John was much appreciated.

After a visit around the premises and refreshments for some, we headed for a short run toward Overton, then back to Twin Springs Wash for another swim. The water in the lake is so delightful at this time of the year it's hard to tear yourself away from it. But all good things must come to an end and soon it was time to turn homeward as we didn't want to miss out on the steak barbeque. By that time most of us were ready for it, for as everyone knows, there is nothing to increase one's appetite like a day on or in the water. After writing this, I'm ready for another swim.

JANUARY 2017

Sun	Mon	Tue	Wed	Thu	Fri	Sat
1 Happy New Year!	2	3	4 Body Cond @8-10 am	5 C.O.M. meets @ 8:30 am	6 Body Cond @8-10 am Sit & Be Fit @10:15 Bingo @ 1 pm	7 <u>Meadview Ridge riders ATV Club @ 9 am</u>
8	9 Body Cond @8-10 am Sit & Be Fit @10:15 Line Dancers @ 6:30 pm	10	11 Body Cond @8-10 am Sit & Be Fit @10:15 <u>Explorers meet @ 6:30 pm</u>	12 <u>Red hats Society @ 1:30 pm</u>	13 Body Cond @8-10 am Sit & Be Fit @10:15 Bingo @ 1 pm	14 <u>MCA Membership Meeting @ 9 am</u>
15	16 Body Cond @8-10 am Sit & Be Fit @10:15 <u>LMRFD @ 1:00 pm</u> Line Dancers @ 6:30	17 Crafty Ladies @ 1 pm Bingo @ 6:30 pm <u>Quail @ 8:30 am</u>	18 Body Cond @8-10 am Sit & Be Fit @10:15	19	20 Body Cond @8-10 am Sit & Be Fit @10:15 Bingo @ 1 pm	21
22	23 Body Cond @8-10 am Sit & Be Fit @10:15 Line Dancers @ 6:30 pm	24 Crafty Ladies @ 1 pm Bingo @ 6:30 pm	25 Body Cond @8-10 am Sit & Be Fit @10:15	26	27 Body Cond @8-10 am Sit & Be Fit @10:15 Bingo @ 1 pm	28
29	30 Body Cond @8-10 am Sit & Be Fit @10:15 Line Dancers @ 6:30 pm	31 Crafty Ladies @ 1 pm Bingo @ 6:30 pm				

FEBRUARY 2017

Sun	Mon	Tue	Wed	Thu	Fri	Sat
			1	2 C.O.M. meets @ 8:30 am	3 Body Cond @8-10 am Sit & Be Fit @10:15 Bingo @ 1 pm	4 <u>Meadview Ridge riders ATV Club @ 9 am</u>
5	6 Body Cond @8-10 am Sit & Be Fit @10:15 Line Dancers @ 6:30 pm	7 Crafty Ladies @ 1 pm Bingo @ 6:30 pm	8 Body Cond @8-10 am Sit & Be Fit @10:15 <u>Explorers meet @ 6:30 pm</u>	9 <u>Red hats Society @ 1:30 pm</u>	10 Body Cond @8-10 am Sit & Be Fit @10:15 Bingo @ 1 pm	11 <u>MCA Membership Meeting @ 9 am</u>
12	13 Body Cond @8-10 am Sit & Be Fit @10:15 Line Dancers @ 6:30 pm	14 Crafty Ladies @ 1 pm Bingo @ 6:30 pm	15 Body Cond @8-10 am Sit & Be Fit @10:15	16	17 Body Cond @8-10 am Sit & Be Fit @10:15 Bingo @ 1 pm	18
19	20 Body Cond @8-10 am Sit & Be Fit @10:15 <u>LMRFD @ 1:00 pm</u> Line Dancers @ 6:30 pm	21 <u>Quail @ 8:30 am</u> Crafty Ladies @ 1 pm Bingo @ 6:30 pm	22 Body Cond @8-10 am Sit & Be Fit @10:15	23	24 Body Cond @8-10 am Sit & Be Fit @10:15 Bingo @ 1 pm	25
26	27 Body Cond @8-10 am Sit & Be Fit @10:15 Line Dancers @ 6:30 pm	28 Crafty Ladies @ 1 pm Bingo @ 6:30 pm				

Please do not send your debit/credit card information or cash through snail mail. Also, please do not provide us with your debit/credit card information through an e-mail. These are not secure places for such important and sensitive information.

_____ E-mail Address:

_____ Phone #:

_____ Alt. Phone #:

_____ City: _____ State: _____ Zip Code: _____

_____ Address:

_____ Care of (if you are caring for the owner's property): _____

_____ Property Owner Name: _____

I want to receive E-Billing.

Information Update/Change form

Meadview Monitor
Meadview Civic Association, Inc.
247 E. Meadview Blvd.
P.O. Box 217
Meadview, AZ 86444

Phone: 928-564-2313
Fax: 928-564-2520
E-mail: mca@citlink.net
Website: mca-az.com

